

UNITED STATES
DEPARTMENT OF THE INTERIOR
NATIONAL PARK SERVICE
CRATER LAKE..... NATIONAL PARK

FILE NO.

REPORT TO THE DIRECTOR
THROUGH THE
SUPERINTENDENT CRATER LAKE NATIONAL PARK

ON

EMERGENCY CONSERVATION WORK ACTIVITIES
AT THE PARKS AND MONUMENTS UNDER
THE JURISDICTION OF
CRATER LAKE NATIONAL PARK
DURING THE THIRD ENROLLMENT PERIOD

IMPORTANT

This file constitutes a part of the official records of the National Park Service and should not be separated or papers withdrawn without express authority of the official in charge. All Files should be returned promptly to the File Room. Officials and employees will be held responsible for failure to observe these rules, which are necessary to protect the integrity of the official records.

By Geo. F. Whitworth
Park Engineer for E.C.W.

HORACE M. ALBRIGHT,
Director.

UNITED STATES
DEPARTMENT OF THE INTERIOR
NATIONAL PARK SERVICE
CRATER LAKE NATIONAL PARK
MEDFORD, OREGON

January 14, 1935

OFFICE OF THE SUPERINTENDENT

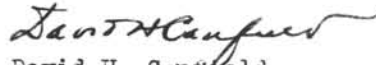
The Director,
National Park Service,
Washington, D. C.

Dear Mr. Director:

We are forwarding, under separate cover, three copies of the report on Emergency Conservation Work in Crater Lake National Park for the third enrollment period. I regret very much the delay in the submission of this report, but I believe that on perusal you will quickly see the great amount of work that was involved,-- more than was anticipated.

This report covers the work accomplished much more in detail than might perhaps seem justified. However, a great deal of difficulty was encountered this past summer in compiling different reports, in that there were practically no records that could be called such, of the first enrollment period. This report, therefore, has been compiled with the thought in mind of giving us as complete a record as possible of E. C. W. work to date in the park, instead of having the first period exist as a gap in our record.

Very truly yours,


David H. Canfield
Superintendent

DHC:EW

EMERGENCY CONSERVATION WORK



REPORT TO THE DIRECTOR
THROUGH THE
SUPERINTENDENT CRATER LAKE NATIONAL PARK

ON

EMERGENCY CONSERVATION WORK ACTIVITIES
AT THE PARKS AND MONUMENTS UNDER
THE JURISDICTION OF
CRATER LAKE NATIONAL PARK
DURING THE THIRD ENROLLMENT PERIOD

By

Geo. F. Whitworth, Park Engineer for E.C.W.



INDEX

SECTION A

MEMORANDUM TO SUPERINTENDENT DAVID H. CANFIELD
INTRODUCTION

SECTION B

HISTORY

CRATER LAKE NATIONAL PARK
LAVA BEDS NATIONAL MONUMENT
OREGON CAVES NATIONAL MONUMENT
CIVILIAN CONSERVATION CORPS AT
CRATER LAKE PARK, 1933

ADMINISTRATION

GENERAL
GENERAL ADMINISTRATIVE OFFICERS
FINANCE AND ACCOUNTS
EQUIPMENT AND SUPPLIES
MAINTENANCE

PROJECTS

GENERAL
LANDSCAPING
FIRE FIGHTING
WILDLIFE STUDY
ART WORK

MISCELLANEOUS

VISITORS
CIRCULARS AND PUBLICITY
ACCIDENTS

WELFARE

EDUCATION
RECREATION
RELIGION

SECTION C

ANALYSIS OF WORK PROJECTS

CAMP ANNIE SPRING, NP - 1
CAMP LAVA BEDS, NP - 1a
CAMP WINEGLASS, NP - 2
CAMP OREGON CAVES, NP - 2a

SECTION D

REPORTS OF PROJECT SUPERINTENDENTS, TO THE PARK
ENGINEER FOR E.C.W., LAST HALF OF ENROLLMENT
PERIOD

INDEX PAGE TWO

SECTION D (Cont.)

L.G. BOWNS, PROJECT SUPERINTENDENT, CAMP ANNIE SPRING
HARRY J. TICKNOR, PROJECT SUPERINTENDENT, CAMP WINEGLASS
I.H. PORTER, PRINCIPAL FOREMAN, ENGINEERING, IN CHARGE OF
SPIKE CAMP OREGON CAVES.

SECTION E TABLES

TABLE I	STATEMENT OF ECW EXPENDITURES BY U.S. WAR DEPARTMENT FOR PERIOD APRIL 5th, 1933 TO MARCH 31st, 1934
TABLE II	AMOUNT OF MONTHLY WAGE CCC ENROLLEE WOULD RECEIVE TO EQUAL CASH VALUE OF WAGES, QUARTERS, SUBSISTENCE, CLOTHING, ETC., IF HE WERE EMPLOYED ON THE REGULAR PARK PAY ROLL AT CRATER LAKE NATIONAL PARK
TABLE III	SUMMARY OF PROJECTS, CAMP ANNIE SPRING, NP-1
TABLE IV	SUMMARY OF PROJECTS, CAMP WINEGLASS, NP-2
TABLE V	SUMMARY OF PROJECTS, CAMP OREGON CAVES, NP-2a
TABLE VI	SUMMARY OF PROJECTS, CAMP LAVA BEDS, NP-1a
TABLE VII	PROJECTS MAN DAYS BY MONTHS, CAMP ANNIE SPRING, NP-1
TABLE VIII	PROJECT MAN DAYS BY MONTHS, CAMP WINEGLASS, NP-2
TABLE IX	PROJECT MAN DAYS BY MONTHS, CAMP OREGON CAVES, NP-2a
TABLE X	RECAPITULATION OF MAN DAYS BY MONTHS, ALL CAMPS
TABLE XI	PROJECT UNITS COMPLETED BY MONTHS, CAMP ANNIE SPRING, NP1
TABLE XII	PROJECT UNITS COMPLETED BY MONTHS, CAMP WINEGLASS, NP-2
TABLE XIII	PROJECT UNITS COMPLETED BY MONTHS, CAMP OREGON CAVES, NP-2a
TABLE XIV	COMPARISON OF WORK ESTIMATED AND WORK ACCOMPLISHED, BY ECW 7 CLASSIFICATION NUMBERS, WITH ENROLLEE MAN DAYS REQUIRED TO DO THE WORK, ALL CAMPS
TABLE XV	ANALYSIS OF PROJECT COSTS, CAMP ANNIE SPRING, NP-1
TABLE XVI	ANALYSIS OF PROJECT COSTS, CAMP WINEGLASS, NP-2
* TABLE XVII	ANALYSIS OF PROJECT COSTS, CAMP OREGON CAVES, NP-2a
TABLE XVIII	COMPLETE PROJECT COSTS, INCLUDING ALLOWANCE FOR ENROLLEE LABOR, CAMP ANNIE SPRING, NP-1
TABLE XIX	COMPLETE PROJECT COSTS, INCLUDING ALLOWANCE FOR ENROLLEE LABOR, CAMP WINEGLASS NP-2
TABLE XX	COMPLETE PROJECT COSTS, INCLUDING ALLOWANCE FOR ENROLLEE LABOR; CAMP OREGON CAVES, NP-2a; CAMP LAVA BEDS, NP-1a AND ALL CAMPS
TABLE XXI	COSTS OF PROJECTS BY UNITS OF WORK ACCOMPLISHED, ALSO MAN DAYS REQUIRED TO PERFORM THE WORK BY UNITS, CAMP ANNIE SPRING, NP-1
TABLE XXII	COSTS OF PROJECTS BY UNITS OF WORK ACCOMPLISHED, ALSO MAN DAYS REQUIRED TO PERFORM THE WORK BY UNITS, CAMP WINEGLASS, NP-2
TABLE XXIII	COSTS OF PROJECTS BY UNITS OF WORK ACCOMPLISHED, ALSO MAN DAYS REQUIRED TO PERFORM THE WORK BY UNITS, CAMP OREGON CAVES, NP-2a

ALSO CAMP LAVA BEDS, NP-1a AND TOTAL ALL CAMPS

SECTION E (Cont.)

TABLE XXIV	STRENGTH REPORT OF ENROLLEES BY CAMPS AS OF FRIDAY OF WEEK SHOWN
TABLE XXV	MONTHLY STRENGTH REPORT AND PAYROLL, SUPERVISORY AND FACILITATING PERSONNEL, ALL ECW CAMPS UNDER THE JURISDICTION OF CRATER LAKE NATIONAL PARK
TABLE XXVI	SUMMARY OF TREES TREATED BY INSECT CONTROL CREWS
TABLE XXVII	SUMMARY OF TREES, SHRUBS AND PLANTS MOVED AND PLANTED AND SOIL PREPARED BY LANDSCAPE CREWS FROM CAMP ANNIE SPRING, NP-1 AND CAMP WINEGLASS, NP-2
TABLE XXVIII	COMPARISON OF WORK ACCOMPLISHED AND MAN DAYS REQUIRED DURING FIRST AND THIRD ENROLLMENT PERIODS, CRATER LAKE NATIONAL PARK
TABLE XXIX	TABULATION SHOWING DATES OF APPOINTMENT AND TERMINATION, RATES OF PAY AND TITLES, SUPERVISORY AND FACILITATING PERSONNEL. ALL ECW CAMPS UNDER THE JURISDICTION OF CRATER LAKE NATIONAL PARK
TABLE XXX	CENSUS OF WILDLIFE WITHIN THE BOUNDARIES OF CRATER LAKE NATIONAL PARK
TABLE XXXI	RECAPITULATION OF MONTHLY ALLOTMENT LEDGER REPORT BY CAMPS AND PROCUREMENT NUMBER
TABLE XXXII	TABULATION OF HEAVY EQUIPMENT ASSIGNED TO THE CAMPS UNDER THE JURISDICTION OF CRATER LAKE NATIONAL PARK
TABLE XXXIII	ARMY PERSONNEL ASSIGNED TO THE CCC CAMPS UNDER THE JURISDICTION OF CRATER LAKE NATIONAL PARK
TABLE XXXIV	PROMINENT VISITORS TO CRATER LAKE NATIONAL PARK IN CONNECTION WITH ECW ACTIVITIES
TABLE XXXV	ACCIDENTS TO AUTOMOTIVE EQUIPMENT

SECTION F

MISCELLANEOUS REPORTS

SAMPLE NEWS RELEASE
PROGRAM CAMP ANNIE SPRING FALL FESTIVAL
FINAL COPY ANNIE SPRING NEWS MAGAZINE
FINAL COPY WINEGLASS VOLCANO

EMERGENCY CONSERVATION WORK



SECTION A

MEMORANDUM TO SUPERINTENDENT CANFIELD

INTRODUCTION



December 31, 1934

Memorandum:

Mr. David H. Canfield, Superintendent
Crater Lake National Park
Medford, Oregon

Dear Mr. Canfield:

In accordance with your request I have carefully analyzed all available data for the Third Enrollment Period, in order that we may have an accurate picture of the work performed by the Civilian Conservation Corps in the Parks and Monuments under the jurisdiction of Crater Lake National Park. These data have all been collated and all information, which I felt would be of benefit in future work along lines of the ECW, has been included in the present volume. This report consists of a narrative story of what the organization did in these Parks and Monuments and a series of tables, maps, pictures and miscellaneous reports that cover the entire program in a complete statistical manner.

In preparing this study three thoughts have been in mind, first, to make it readable so that whoever may review it will not lose interest in a maze of irrelevant facts; second, to include all pertinent data that may be of a value at Washington or elsewhere in analyzing the work of the Corps and perhaps in assisting to lay out future programs; and finally to so prepare the information that the Park organization can tell what was done, in perhaps greater detail than would be required by Washington, thus permitting the use of past experience as a guide to future similar work.

To prepare this collation required a much longer and more intense study than was at first contemplated, due to the fact that, because there was no available information on the methods of the previous (First) Enrollment Period, most of our system of keeping records had to be based on trial and error, resulting in incomplete records for the first half of the present enrollment period which had to be carefully adjusted to give a true picture of the work done. However, I believe that these discrepancies have been eliminated and the contents of this volume give the story and facts of our work accurately as it was actually performed.

On the whole the work thru the entire enrollment period went remarkably smoothly, due primarily to the magnificent spirit of cooperation that pervaded the entire organization, army, enrollees, Park

Service and ECW. The work of all concerned was of such a high standard that it is scarcely possible to single out any particular individual for special mention, yet I feel that I would not be fair to the men concerned if I did not call attention to the especial merits of certain members of the organization. Among the Foremen L. W. Foy and Pete J. Hogensen were outstanding, both in work accomplishments and in their ability to handle the men. The assistance of Project Superintendent Harry J. Ticknor in planning the work, in carrying out instructions and in his willingness to be on the job day and night was of the utmost value. I do not believe that I have ever met a man who was as willing to go as far in his desire to co-operate for the good of the cause as was Captain John P. Merrill. Among the Enrollees, Leaders Joe Hudron and Marion Galbraith showed outstanding ability and Enrollee Clerk A. R. Manne was of the greatest assistance in his willingness to be on the job at all times, and in the neatness and accuracy of his work. It was not until the Clerk for ECW, Alice McKinstry, was appointed that we were able to organize our records and accounting on a basis that made for accuracy and simplicity. In mentioning these names I have not intended to slight anyone, everyone connected with the organization did all that was asked of him and more but I have mentioned by name those whom were of particular assistance in the accomplishment of the program for the period.

Finally, I wish to take this occasion to thank you for the opportunity you have given me in handling a job of this type and my only hope is that you were relieved of enough of the details of this organization to correspond with the joy and pleasure I have had out of the work.

Very truly yours,

Geo. F. Whitworth
Park Engineer for ECW

GFW/M

SECTION A

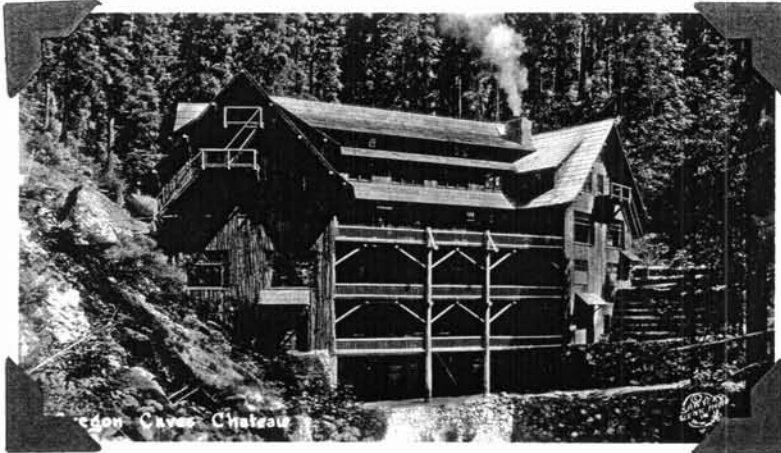
I N T R O D U C T I O N

The Emergency Conservation Work Camps evacuated Crater Lake National Park the latter part of October, Camp Annie Spring, NP-1 being terminated October 20th, and Camp Wineglass, NP-2 on October 22nd, 1934. Since that time many reports have been submitted on the ECW activities of the Third Enrollment Period incident to the inspections of the work of the Civilian Conservation Corps in the Camps under the jurisdiction of Crater Lake National Park. This report correlates all of such primary data extant, placing all of the most essential of these data under one cover in a manner that will make it of value in the future as a reference for all activities of the Emergency Conservation Work in these camps. To accomplish such results free use has been made of every available source of information using required information from the above mentioned reports and from other records in the files of the Park and the local ECW organization from conversations with various members of the Park and ECW staffs, from Army records and, in short, from wherever it was felt that pertinent accurate information could be obtained.

While at first sight this report may appear too verbose it has been so organized by dividing the subject matter into logical headings that fall into a natural sequence that he who hastes may read. In general, the narrative section is primarily a discussion of our experiences in running an emergency program, which due to the very nature of its existence had no established precedent which might be followed as is the case in an older, more permanent organization. Hence, much of our work was of a pioneering nature.

Now that it seems probable that the Emergency Conservation Work will go forward, if not in exactly the same form then in one not entirely dissimilar, it is necessary to discuss our methods, not with the idea of telling a tale, but to serve as an aid to those that follow so that they may avoid some of the pitfalls into which we fell, and may take advantage of whatever progress we have made towards the goal we are all seeking, a successful permanent organization that will properly and economically conserve our Forests and Parks and will make men of all of these to whom comes the opportunity to serve in the Civilian Conservation Corps.

This report has been divided into six general sections, the first of which is an introduction. The second section is devoted to a narrative of the Emergency Conservation Work in the camps



THE CHATEAU AND EVENING CAMPFIRE, OREGON CAVES NATIONAL MONUMENT

Under the jurisdiction of Crater Lake National Park, discussing the varying phases in broad terms, but with sufficient detail to make clear what we have attempted and the methods employed in obtaining the results attained. The balance of the study consists of a series of sections that analyses the many phases of the problem. It is here that the statisticians have been given free rein, it is a portion from which, perhaps, the casual reader will abstain, and yet it is these sections that contain the meat of the nut for that person of inquiring mind who wants to know just what the CCC boys did in our Park and how much it cost. But we have confined this detail to the rear of the book, and for the person who wants the picture in its broadest terms we have tried to prepare a narrative that will cover the problem fully, yet concisely.

In the narrative section we have first touched upon the historical background of the Park and the Monuments, in order to better understand the relationship with, and the necessity for, the Emergency Conservation Work Program. And, in order to become better acquainted with our comrades of the summer, we have given a very brief history of the two organizations that worked in the Civilian Conservation Corps of this Park, Company 1555 at Annie Spring and Company 1634 at Wineglass and Oregon Caves.

The problems of administration are discussed under the headings of Administration, Personnel, Finance and Accounts, Equipment and Supplies, and Maintenance. Projects are covered in this section only in the very broadest terms, as this is a subject that can best be covered in statistical detail, and it is so covered in later sections of this Report.

There is a brief discussion of miscellaneous items, such as visitors, of which we had a great many, publicity and circular, and accident, of which, fortunately, we had but few.

Finally, the narrative section closes with a short report of the welfare work of the Army among the men, its efforts along the lines of Education, Recreation and Religion. No description of the great work the War Department is doing in the furnishing of subsistence, quarters, clothing and transportation is included in this study, that is essentially the subject of an Army Report and would be out of place in a report of primarily ECW activities. But the Army is doing a splendid piece of work in a splendid way and with the finest spirit of co-operation and we wish to take this opportunity of expressing our deepest appreciation of the work that body is doing.

In order to grasp the entire work program by project at a glance all of the pertinent statistical data and information on the respective projects at the several camps have been analyzed in tabular form, with accompanying maps and pictures, in section C. This section is, in reality, an elaborated form of the Supplemental Report already submitted to the Director.

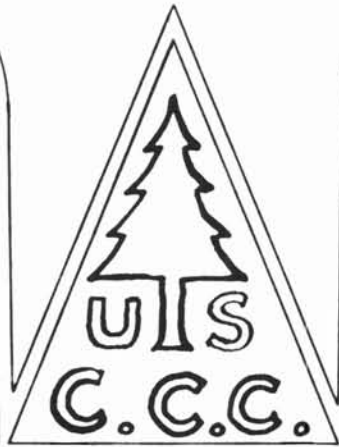
The reports of the Project Superintendents and the Principal Foreman (Engineering) in charge of the work at the Oregon Caves to the Park Engineer for ECW for the work done the last half of the Third Enrollment Period, namely, from the first of July to the evacuation of the camps are included with appropriate maps and pictures in Section D.

All statistical data appertaining to the Third Enrollment Period are shown in tabular form in Section E. The data of these tables are the basis of the analysis of Section G.

There are certain supplementary papers and documents referred to in the text which are pertinent to the subject matter of this report. These are included in Section F.

**Congressman Walter M. Pierce Addressing
CCC Enrollees at Camp Wineglass
August 31st, 1934.**

EMERGENCY
CONSERVATION
WORK



SECTION B
NARRATIVE REPORT



SECTION B

NARRATIVE

HISTORY

Crater Lake National Park

Crater Lake National Park, located on the crest of the Cascade range in Southern Oregon is one of the Nation's most unique scenic wonderlands--consisting of a reserve for posterity of 160,833 acres. The Lake lies in the heart of the ancient Mount Mazama, the destruction of which formed a huge crater six miles in diameter, two thousand feet deep, with circular lava cliffs a thousand feet high.

In June of 1853 a party of miners was searching for the so-called Lost Cabin Mine. With food and supplies drawing low, John Wesley Hillman and his mule went on ahead of the main body of the hunting group. Suddenly the animal halted at the rim of a deep, blue lake. As the other members of the party joined Hillman they were inspired by its awful majesty. However, due to the excitement of gold and the Indian wars there were few visitors to this lake for many years.

In 1872 William Gladstone Steel, the Father of Crater Lake, first came to Oregon. But it was not until 1885 that he was able to make good his youthful resolution to visit the place, and, finding it even more beautiful than he had anticipated, he conceived the idea of having the region made a national park, and began an immediate agitation for this. Success finally crowned his work, and the park was established by an act of Congress, approved May 22, 1902. Judge Steel thereafter devoted his life to the development of the park, becoming one of its first Superintendents, later being appointed Park Commissioner, which position he held until the time of his death, October 21, 1934.

The construction period in Crater Lake National Park, due to the occurrence of exceptionally heavy snowfall, is exceedingly short making every working minute of untold value in Park improvement projects. Hence, it was with an especial interest that the Park Officials greeted the ECW program and the opportunities it offered for improvement of the Park properties.



VIEWS OF ROAD BUILT WITH NIRA FORCES
DURING THE WINTER OF 1933 - 34
LAVA BEDS NATIONAL MONUMENT

Modoc Lava Beds National Monument

The Modoc Lava Beds National Monument is an area of outstanding geological and historical importance, primarily because of the varied volcanic formations, such as caves, natural bridges, cinder cones, funeroles or chimneys and many other varied types of lava flow formations, and because, from an historical standpoint it was the scene of the only Indian War between whites and Indians fought on California soil, the site of the Modoc Indian War of 1872-73. Of the 250 known caverns in this area, but 129 have been explored. Several have more than one level, many are lengthy and of intricate networks which may total, in individual cases, to more than two miles. Ice and water are found in a few of the caves. According to various geologists who have explored the region the latest activity occurred between two and five thousand years ago.

The Monument consists of an area of 45,967 acres, and was created as a National Monument, following the recommendation of the National Forest Service, on November 21, 1925. By Presidential Proclamation it was transferred from the National Forest Service to the National Park Service, in February 1934, and placed under the jurisdiction of Crater Lake National Park.

Certain improvements have been made in the area, but only of a minor nature, consisting primarily of the construction of roads and trails on which about \$50,000 of NIRA funds were spent under supervision of the National Forest Service. Much must be done in this area if its many points of interest are to be made available to the traveling public.

Oregon Caves National Monument

The Oregon Caves have been known since that August day in 1874 that Elijah Davidson, according to the accepted story, chased a wounded bear into one of the entrances of the Cave, armed with a muzzle loading gun and lighted by the smoky flare of a pine splinter torch, killing the bear a short distance from the mouth of the Cave. Several sporadic attempts were made by private parties to develop the underground attraction without success. On July 12, 1909 President Taft set the area aside as a National Monument, under the supervision of the National Forest Service. In February 1934 President Roosevelt signed an Executive Order transferring it from that Service to the National Park Service, placing it under the jurisdiction of Crater Lake National Park.

The mountain in which the Caves lie is of a bluish gray marble formation, out of which the water of the ages has carved the Marble Halls of Oregon, dissolving out the soluble limestones and forming many beautiful and fantastic figures, with pendant stalactites and with corresponding stalagmites rising from the floor.

The Civilian Conservation Corps at Crater Lake Park 1933.

The winter of 1932-33 was unusually severe, nearly seventy five feet of snow falling at Government Camp during that season. The first contingent of CCC enrollees arrived at the two camps in the Park on June 12th and the men immediately fell to work to build the encampment, the work being sufficiently completed by the twenty third of the month to permit starting on the Park construction program.

Camp NP-1 was located in the flat to the south of Government Camp Headquarters. Originally it had been planned to locate Camp NP-2 at The Wineglass, directly across the Lake from the Lodge Area, but due to the excessive snow conditions, this location proved to be impossible, hence the Camp was located near the site of the Lost Creek Ranger Station, although it retained the name of Wineglass. A summary of the work of the season and a comparison with that accomplished by the Camps in 1933 and 1934 is shown in Table XXVIII of Section E.

The Civilian Conservation Corps in Crater Lake Park 1934

Two Camps were assigned to Crater Lake Park for the Third Enrollment Period in the Emergency Conservation Work. Camp NP-1 was located at Annie Spring, about one quarter mile south of the Annie Spring Checking Station, near the South Entrance Road, under the command of Captain John R. Murray. On June 1st, 1933 at Fort Knox Kentucky, Company 1555 was formed, moving directly to Camp Moon Prairie near Medford, Oregon after a short conditioning period. On November 1st, 1933, Camp Ingram, CCC Company 1647, and Camp Bly, CCC Company 1645 joined forces with Company 1555 at its winter camp at Evans Creek, Rogue River National Forest, and were consolidated as one company. During the month of April 1934, many of the men of the Company left to accept employment, requiring an enrollment of 110 new members when the camp was moved from Evans Creek to Annie Spring, arriving at the latter location on April 9th. On the 30th of June all of the original members with the exception of twenty nine were discharged, and their places were refilled by local men. Thus, this company consisted during the major part of its existence at Crater Lake as an L.E.M. Company, field work from this camp was started on April 26th.

Camp Wineglass, NP-2, was originally enrolled as Company 1634 at Jefferson Barracks, Missouri, in May, 1933. After a short conditioning period it was transferred to Camp Hamilton, P233, Lyman, Washington, arriving in June 1933. With the approach of the winter season the camp was transferred to Camp Minnewawa, P233, at Jamul, California near San Diego, arriving there October 1933. At the



Entrance to the Oregon Caves.



Looking down into the River Styx, Oregon Caves.



Cathedral Arch, Oregon Caves.



King's Palace, Oregon Caves.

SCENES IN THE OREGON CAVES

beginning of the Third Enrollment Period this camp was transferred to the site near the Lost Creek Ranger Station occupied by the Wineglass Camp in the First Enrollment Period, arriving there April 15th, 1934. Field work was started from this camp on April 17th.

On the 17th of May a detachment of eighteen men was sent to Camp Oregon Caves to construct a spike camp to take care of the ECW activities at this location. On June 5th twenty four additional men were transferred, and the work projects were started in this camp on the 21st of June.

ADMINISTRATION

General

Originally the instructions to the Project Superintendents were issued directly by the Park Superintendent, with the Landscape Architect for ECW and the Park Engineer for ECW acting in an advisory capacity. However, as the press of administrative policies for the entire park grew with the advancing of the Park Season, Park Superintendent David E. Canfield appointed Park Engineer for ECW George F. Whitworth to act as General Supervisor for all ECW activities of the Camps under the jurisdiction of Crater Lake National Park. Mr. Whitworth was to act as the Park Superintendent's representative in all phases of Emergency Conservation Work, and was to generally supervise the activities in such a way as to relieve the Park Superintendent of all details, referring to him primarily only major problems and consulting with him on the general phases and progress of the work.

A system of control was immediately organized by which the work could be laid out and coordinated with the general Park activities, permitting the Park administrative personnel to have full cognizance and necessary control of such activities, but at the same time giving the Project Superintendents wide latitude in the performance and method of planning the work, but a method of handling the cost accounts so that accurate data would be obtained for the several projects in order to supply the information required by the Washington office. To do this adequately and with a minimum of clerical and administrative help, a system of forms was devised. No copies of these forms have been included with this report as, due to our experience in the Third Period a modified set has been prepared which will be submitted with the Fourth Period Records.

Before any work could be started on any project a work order was prepared designating the party to have charge of the work, and showing the project to which all work was to be charged. On this form

space is provided for showing the enrollee man days broken down to enrollees, assistant leaders, and leaders, the cost of foremen and the cost of gasoline and oil used

Immediately upon ordering material for use in any project the date of ordering, order number, and a brief description of material were placed on a form provided for this purpose, together with the amount obligated. Upon vouchering the order, an amount equal to that encumbered for the item in question was placed with the amounts vouchered, properly segregated as to personnel pay, travel expenses, materials and supplies, etc. It was thus possible to keep complete accounting and man day control on all projects under ECW activities.

Space is also provided on these work orders for clearance by the Landscape Department, where such clearance is necessary and also for approval by the Park Superintendent, although the latter's signature on a project that was already on the program authorized by the Director was more or less a matter of routine. However, such authority was required before work was started on any minor project not on the approved program, but which according to the terms of ECW Handbook Supplement No. 107 might be authorized by the Park Superintendent.

General Administrative Officers

David H. Canfield.....	Park Superintendent
George F. Whitworth,	General Supervisor for ECW Activities, Park Engineer for ECW
Francis G. Lange*.....	Landscape Architect for ECW.
Alice McKinstry.....	Clerk for ECW.
Geraldine Thompson	Clerk for ECW.
James L. Cook.....	Supervising Mechanic

The entire supervisory and facilitating staff for all camps, giving name, title, salary and dates of appointment and termination have been shown* as have all at the pertinent data on the Army Personnel***

We have been fortunate in the able group of men that were appointed, and wish to express our sincere appreciation of the loyal cooperation received from the entire supervisory and facilitating personnel during the Third Enrollment Period.

* Paid from San Francisco, ECW funds.

**Table XXIV Section E.

***Table XXXIII Section E.



CAPTAIN JACK'S NATURAL BRIDGE



TRAIL APPROACHING MAMMOTH CRATER



HEPPE CAVE

LAVA BEDS NATIONAL MONUMENT

Finance and Accounts

The only specified accounting procedure listed in the ECW instructions cover the accounting in a very general manner, leaving the details to be worked out in the several National Parks or Monuments.

Due to the press of organizing the work for the two camps totaling approximately four hundred men, and in order to avoid having these men stand idle, the time of the General Supervisor was concentrated during the first of the season on work projects, and it was not until the Third Enrollment Period was nearly one half completed that a thorough analysis was made of the cost accounting details. Hence, in the early reports, while the general information sent to the Washington Office, such as allotment ledgers, estimates of costs, etc. were correct, the detailed segregation of the several jobs was inaccurate. These costs have been thoroughly analyzed and adjusted since the completion of the Third Enrollment Period, and are included in tabular form in Section E.

It should be noted that none of the costs as given for the Third Enrollment Period include the cost of materials purchased during the First Enrollment Period, which were not needed during that period but were used for Third Period projects, as it was impossible to tell from the meagre available records the costs of these materials and supplies. Nor is the depreciation on major equipment purchased for use of the ECW included as part of the cost of these projects. On the other hand certain small equipment purchased for an emergency with Park ECW funds were immediately charged in their entirety to the current jobs of the work in which purchase was made. This latter item however is so small that it will have no mentionable effect on the cost of the jobs and by so doing it greatly simplified the amount of book keeping required. In short the cost figure includes all monies spent on Third Enrollment Period Projects from Third Enrollment Period Park ECW Funds and these costs only.

The data for preparing these tables were obtained, in general, from forms similar to those described above. No records of this type however, were kept prior to the first of July, hence the costs for the early part of the Third Enrollment Period were obtained by an analysis of all purchase orders issued prior to that date, balancing these figures where necessary with the monthly allotment ledger reports to Washington by pro-rating the unsegregated balance. For subsequent months it was necessary to pro rate certain of the figures, as for example the gas and oil used for the several jobs, and the automobile repair costs. The former costs were pro rated on a basis of the gas and oil used by the individual projects, while automobile repair costs were pro rated according to the truck mileage of the trucks assigned to the several jobs. Overhead labor costs, as distinguished from that of foremen whose time could be directly charged to a given project, and including such items as clerical hire, Project Superintendent costs

and the like, were charged to each job on a basis of total enrollee man days used on the work. Each month the costs were segregated as to labor, materials and supplies, freight, utilities and miscellaneous, and summed up according to projects, including the pro rated figures, the totals for all of the work at all of the Camps then being balanced against the total figure reported to the Director on the Monthly Allotment Ledger.

It will be noted that in some instances the total expenditures by individual camps will not be the same as shown on the tabulation of monthly Allotment Ledgers in Section E** and the figures for the same camps for the same month as shown in the cost analysis**. This discrepancy is due to the fact that occasionally entries were made to the wrong camps when preparing the Monthly Allotment Ledgers. Insofar as the Washington Office is primarily interested in the total figures for all camps the Allotment Ledgers were not corrected when the erroneous entries were discovered, it being felt that if the total values for all camps balanced between the two reports that the journal entries required to make the individual camp figures balance were unnecessary.

The cost analysis tables of Section E are nine in number. One set of three tables*** showing according to payroll, travel expense, materials and supplies, freight, utilities, miscellaneous items, and balance encumbered, but not distributed for the several projects throughout the Third Enrollment Period and compares the actual costs with the estimated values of the original approved program.

The cost of the individual projects are tabulated in the next set of three tables**** according to the following classifications:

- (1). Cost of labor of supervisory and facilitating personnel and force account.
- (2). Estimated Costs, Enrollee Labor
- (3). Total Labor Costs
- (4). Costs Other Than Labor
- (5). Total Estimated Costs of Projects

The estimated cost of enrollee labor that should be charged to the several jobs was obtained from the data of the first table in Section E which is an analysis of the cost to the U.S. Government of the enrollee labor as taken from the second report of Robert S. Fechner, Director of the Emergency Conservation Work. By a study of this Table it will be seen that throughout the United States the average cost of all CCC labor, including enrollees, assistants, leaders, and leaders, is \$3.53 a day.

* Table XXXI

** Table XV, XVI, and XVII

*** Tables XVIII, XIX, and XX

****Tables XVIII, XIX, and XX

The next set of three tables* shows a breakdown of the cost of the several projects by units, giving the cost per unit of+

- (1) Supervising, facilitating and force account labor.
- (2) Other direct costs, (including those obligated but not liquidated.)
- (3) Total cost of the job exclusive of the cost of enrollee labor.
- (4) The estimated cost of CCC enrollee labor.
- (5) Total cost of work of the individual project.
- (6) Man days of enrollee labor required per unit of construction.

Equipment and Supplies

The major equipment assigned to the Crater Lake Park Service is tabulated in Section E**. In addition to this major equipment there was a large assortment of small tools and tool repair parts.

At times it was necessary to make use of certain of the National Park Service equipment; as for example, the power hoists were used in planting trees and rocks for the landscaping department, a grader was borrowed for use on the truck trails, and a Fordson tractor and Cletrac 30 were borrowed for use with a Fresno scraper on old road obliteration, erosion control and general cleanup. The National Park Service also provided a Ford model A. Coupe for the official use of the Park Engineer for ECW. It was not necessary to rent any equipment.

All trucks and other heavy equipment were obtained from a central pool, rather than being assigned permanently to any given camp, the General Supervisor for ECW Activities transferring the equipment from camp to camp as work conditions demanded.

Maintenance

A large portion of the truck equipment received from other agencies at the beginning of the Third Enrollment Period was in very poor condition requiring the expenditure of approximately \$600 in parts and over \$1,000 in tires to put it into a reasonably first class condition. Due to the extensive use of the truck equipment demanded by the varied program of the several camps, it was impossible to put the equipment in first class condition even by the end of the Third Enrollment Period, although all of the trucks were in much better condition when turned over to other agencies at the end of this period than they were at its beginning.

* Tables XXI, XXII and XXIII

** Table XXXII

PROJECTS

General

Whereas in 1933 weather conditions in Crater Lake Park were such that ECW activities could not be started until the middle of June, the winter 1933-34 was unusually mild and work was started by the middle of April. The favorable weather conditions were especially fortunate for the landscape work on which a large number of men were used for early planting, thus allowing the transplanted materials time to secure firm entrenchment before any untoward changes in the weather occurred.

The construction on projects for the period July 1st to termination of the camps is covered very completely in the Camp Project Superintendent's reports to the Park Engineer for ECW as included in Section D. Also included in this Section are four maps of the projects of these camps showing the work accomplished on both construction and non-construction jobs during this period of time.

Twelve of the Tables* of Section E include a careful analysis of the man days and the amount of work accomplished on the several projects of the Camps under the jurisdiction of Crater Lake National Park for the entire Third Enrollment Period. As noted elsewhere in this study certain of the records at the beginning of the enrollment were not kept as accurately as they should have been, the figures, in many cases being supplied by the enrollee camp clerks without the close supervision that later developments proved were necessary. Hence, the figures in these tables will not agree in their entirety with those submitted in the monthly ECW 7 Form to the Director. After a careful analysis of all available data it is believed that the figures in these tables are an accurate record of the actual man days required to accomplish the work of these camps.

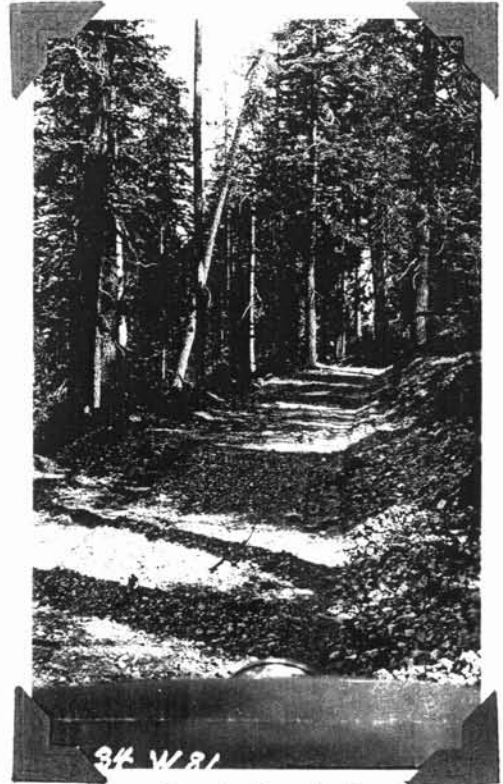
In these tables are summarized the several projects at the Camps under the jurisdiction of the Crater Lake Park, man days by projects by months, a recapitulation of the man days furnished by all camps for all projects, the units completed by month according to the several projects, and the comparison of work contemplated with the work actually accomplished.

In Section C there is a complete analysis of each project showing the Park Priority Number, the Form ECW 7 Classification number, and a description identifying the work to be accomplished with its location. All pertinent data on each project is shown in tabular form together with numerous photographs and six maps showing the total construction and non construction projects

* Tables III to XIV inclusive.



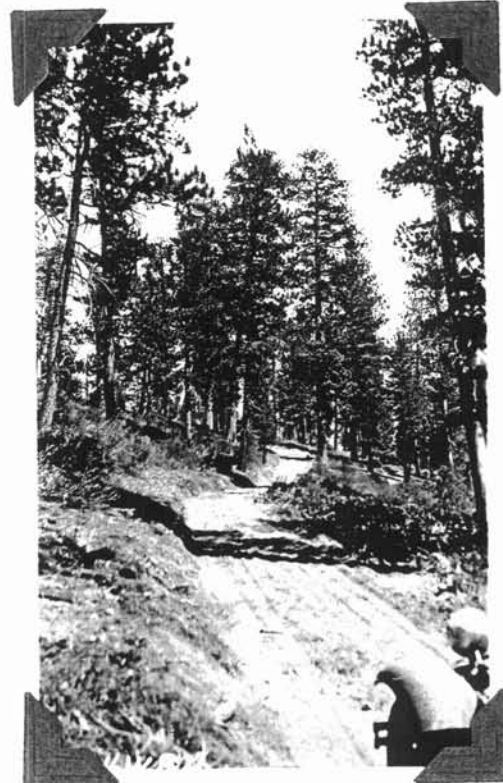
34 W 79
Bear Creek Truck Trail
August 25th, 1934



34 W 81
Bear Creek Truck Trail
September 4th, 1934



Union Peak Loop Truck Trail
September 15th, 1934



Timber Crater Loop Truck Trail
September 4th, 1934

SCENES ALONG TRUCK TRAILS BUILT BY ENROLLEES FROM CAMP ANNIE SPRING AND
FROM WINEGLASS

completed at Crater Lake and Oregon Caves during the Third Enrollment Period. There are also two maps showing the entire work accomplished by the use of ECW funds during both the First and Third Enrollment Periods. A brief discussion of the work actually accomplished concludes the analysis for each project, including all items of interest in connection with the work on the project, thus showing not only what was contemplated, but also what was actually accomplished, but the labor required to do the work, the cost of each job and any particular difficulties that may have been encountered in doing the work, or reasons why the work as performed differed from that originally contemplated.

Landscaping

The Landscaping Work for ECW was handled under the very able direction of Mr. Francis G. Lange, Landscape Architect for ECW, and he has prepared reports covering this matter in a very thorough manner, information from which has been freely used in this study.

Due to the exceptionally dry year a general maintenance program was of absolute importance, requiring the watering of sod, plants, and shrubs placed not only in 1934, but also those placed in previous years. This required watering was reduced to absolute essentials only, because of the lack of water for other purposes in the Park, the amount used at the Rim for example being approximately 25% of that used in 1933.

The area directly in front of the Lodge, at the Rim, known as the circular area, has been completely sodded, and plants, shrubs and trees have been introduced. Certain planting has also been done around the lodge building and around the concessionaire cafeteria, greatly improving the appearance of these buildings. The campgrounds, both at Annie Spring and at the Rim, particularly at the latter point have been materially improved, including the construction of combination stoves and fireplaces,

The old Administration Building was removed by CCC labor, permitting landscape work at that site, and requiring general cleanup. Planting was done around the Ranger Dormitory, the circular area in front of the Ranger Dormitory, and the entrance to the Government area, including 35 large trees and numerous quantities of peat and top soil, and plants and shrubs. In order to protect the planted area large boulders were sunk-projecting above the sod a foot or more, but being so planted as to retain a natural appearance.

Trees and shrubs and buried boulders were placed around the concessionaire oil station in the Government Camp area. The residential quarters above the Administration Building were landscaped, peat, top soil and sod, plants and shrubs being placed



Planting Trees in Area near
Government Camp, with CCC Enrollees
from Camp Annie Spring
under supervision of Foremen H.W. Buford
and H. C. Edinborough
Annie Spring Project No.
August 31st, 1934

around these buildings, and in the circular drive areas, resulting in interesting treatment in areas previously void of such work. Along the entrance highways about six miles of old roads were obliterated and trees and shrubs planted in the road bed, which in a few years' time should completely remove all traces of the earlier highways. The quantity of plants and materials moved by the Landscape Department to carry out the work done at the Park during this season have been tabulated.*

Fire Fighting

Forest fires required 1946 man days spent fighting fires or holding men in during work hours to permit their being called upon for fire fighting protection. The actual cost of these fires to the Park ECW funds and excluding any allowances for costs of enrollee labor was \$782.18.

In order to properly handle the fire situation a fire plan was prepared giving the general instructions to the Project Superintendents and Supervisory and Facilitating personnel as to the procedure to be followed, and showing the fire fighting organization in graphical form, together with a Directory indicating the administrative officials having jurisdiction of fire fighting.

There were four major fires fought by crews from Crater Lake Park, and one fire by a crew from Oregon Caves. All of these major fires were outside of the Park or Monument boundaries. In addition, there were one or two small fires set by lightning within the Park boundaries which were handled by small crews under the supervision of Acting Chief Ranger Charles H. Simson, and also small fires at Camps Annie Spring and Wineglass, attributed to sparks from a hot drum-type stove. They were brought under control, however, with the loss of a couple of tents and some clothing.

At the Shaw Bertram fire Mr. Kemp, who was in charge of all the fire fighting crews, commended very highly the work of the boys from our camp. At the Prospect fire one of the Camp Annie Spring foremen reported that State Fire Warden Phipps and Fire Warden Green at Prospect told him, "This Annie Spring crew is the best bunch fighting fires that we have seen this year."

Wildlife Study

On the 15th of July Robert S. Evans was assigned to this camp as Wildlife Technician to study the wildlife and fauna in this Park. Mr. Evans has made two very complete reports covering his work while at the Park. He spent most of the time in the outlying areas studying the wild animal life. In his report it is noted that the signs of animal life observed were comparatively few in number.

* Table XXVI



Camp Annie Spring Enrollees
en route to fire line at
Prospect Fire under leader-
ship of Foreman E.L. Johns
August 25th, 1934



Rest period for enrollees
from Camp Annie Spring at
Prospect Fire
August 25th, 1934

ENROLLEES FROM CAMP ANNIE SPRING ON FIRELINE
AT PROSPECT FIRE

Mr. Evans and Acting Chief Ranger Simson prepared a census of the wildlife within the Park. A summary of the results of this census is shown in Section E*.

It was Mr. Evans' conclusion that the Western half of the Park due to the greater amount of moisture, is probably the most interesting and variable from the wildlife standpoint, and should insofar as possible be preserved in its natural state.

Art Work

On the 21st of July two artists were assigned to this Park in connection with LCH work. These artists were L. H. Crawford from Wellsville, Ohio, and Arthur Merkle, from Cleveland Ohio, and were chosen from a large group of prospects as being believed to have the greatest ability to make the best interpretation of the beauty of Crater Lake Park in water colors. They were stationed at the Park under the Federal Public Works of Art Project, their paintings to become the property of the Government and to be displayed at suitable places.

In addition to the work to which these men were assigned, they have been of the greatest of help in their willingness to cooperate in the preparation of miscellaneous reports, etc., devoting a large part of their personal time to such work.

This was in addition to their regular work which was not neglected, and a number of very beautiful water colors have been prepared by these boys for exhibition at suitable locations. An exhibit of the work of Crawford was held in the Hotel Medford at Medford, Oregon causing much interest among the people of Jackson County.

* Tables XXX



Waste Disposal Pit built by CCC enrollees
near Camp Lewis Spring, under the supervision
of Forest W. H. Joy

September 10, 1934

M I S C E L L A N E O U S

Visitors

During the Third Enrollment Period many visitors of note were guests at the Park, some of them were here primarily on general Park business, others were here specifically to visit the ECW.

On the ninth of August Director Arno B. Cammerer of the National Park Service in company with Col. C. G. Thompson of Yosemite National Park, after having been one of the guests of Honor together with Col. Thompson and Director of ECW Robert S. Fechner, at a banquet at Medford.

On the tenth of August Robert S. Fechner, Director of ECW, with Major Clare Armstrong, Commanding Officer of the Medford District, and C. B. Mosse, Liaison Officer, 9th Corps Area, spent the entire day at the Park, visiting the various work projects. They had lunch at Camp Annie Spring and dinner at Camp Wineglass followed by an entertainment put on by the boys. Mr. Fechner spent the night at Crater Lake Lodge, and the following morning left with Regional Supervisor C. J. Buck of Portland. Mr. Fechner was well impressed with the work the CCC is doing in the Park.

Congressman Walter M. Pierce spent August 3rd in the Park, evincing great interest in ECW camps and the work they are accomplishing. He had lunch at Camp Wineglass, and supper at Camp Annie Spring. After lunch at Camp Wineglass he gave a most interesting talk to the boys, expressing his favorable opinion of the CCC and in conclusion commended very highly the efficiency and good will of the boys and the supervisory and facilitating personnel.

The visitors to the Park on primarily ECW business are listed chronologically in Section E.*

Circulars and Publicity

Ernest Rostel, who had charge of the publicity for Crater Lake Park, submitted many articles to the press concerning ECW activities. In Section F is enclosed a typical news release prepared by Mr. Rostel covering CCC activities.

* Table XXXIV

Each of the two camps published a mimeographed paper. The one at Camp Annie Spring was called the Annie Spring News Magazine, and was published monthly. At Camp Wineglass the paper was the Wineglass Volcano, with an issue every two weeks. A copy of the final edition of each of these camp newspapers is included in Section F.

Both of the Camps put on several radio programs. The Camp Annie Spring broadcasted over the Medford station, KMED, while Camp Wineglass gave several broadcast programs over both stations, KMED at Medford and KFJI in Klamath Falls. At Camp Wineglass two amateur radio short wave stations were set up, W7Dai. Enrollee Marcel Caster, and W7EJI, Enrollee Norval E. Wiley, who were on the air daily at stated hours getting messages back to the boy's home towns in Illinois.

Accidents

On the whole, the work of the ECW in Crater Lake Park has been remarkably free from accidents. One Foreman, E. K. Loosley, cut his wrist and lost about a week's time. Several of the enrollees suffered minor injuries with a total time of approximately thirty man days.

There were five accidents to automotive equipment, all of which have been reported to the Director thru the customary channels. Specific data on those accidents are tabulated in Section E.*

* Table XXXV



Burning debris from roadside cleanup with CCC Enrollees from Camp Wineglass under supervision of Foreman Edinborough
September 24th, 1934

WELFARE

Education

In following out the general plan for education during the Third Enrollment Period two methods have been used:

1. The more or less formal method of the classroom.
2. Informal field instruction with the various project foremen instructing the boys as to the use of the tools and equipment.

By means of this latter method of instruction large numbers of the boys became acquainted with the proper methods of handling small tools. Three of the boys became quite proficient in the operation of a caterpillar with bull dozer attachment.

The more formal education consisted of evening classes with an Army officer, Park Foreman or an enrollee who was proficient in the subject as instructor. Classes in First Aid, Diesel Motors, Elements of Electricity, Short Wave Radio, Code and Signalling, Current Affairs and Discussion of National News, Journalism and Short Story Writing being offered at Camp Annie Spring, while at Camp Wineglass courses were offered in First Aid, Free Hand Drawing, Radio, Elements of Electricity, Diesel Engineering, Journalism, Current Affairs, Citizenship, English Literature, and Spelling.

Spelling bees were also held at the different camps, with packages of cigarettes being offered as prizes. In addition there were frequent lectures by outsiders, members of the Park Service Ranger Force, the Superintendent of the Indian Agency, and other persons with an educational prestige that it was thought would be of benefit to the boys.

Recreation

Both of the Camps at Crater Lake Park had baseball teams that on the whole had very successful seasons, playing not only other CCC Camp teams, but also teams from the various towns and business organizations in the immediate vicinity.

The enrollees of Camp Annie Spring put on a Fall Festival, having athletic events in the morning and afternoon, dancing and a lecture in the evening. An excellent dinner was served to four hundred people, there being over two hundred guests at this Festival. In Section F there is a copy of the program of this Festival, and further information is given in the copy of the Annie Spring News Magazine in the same section.

On the 29th of June Camp Wineglass gave a farewell dinner and dance to the boys who were returning to Illinois. This was a success in every way, and thoroughly enjoyed by all of the boys.

Foreman Foy organized an orchestra at Camp Annie Spring that played over the local radio stations at Medford and Klamath Falls several times with very complimentary remarks from the radio audience. An informal Glee Club was also organized at Camp Annie Spring, and its radio premiere was very much enjoyed by the people of Jackson and Klamath Counties.

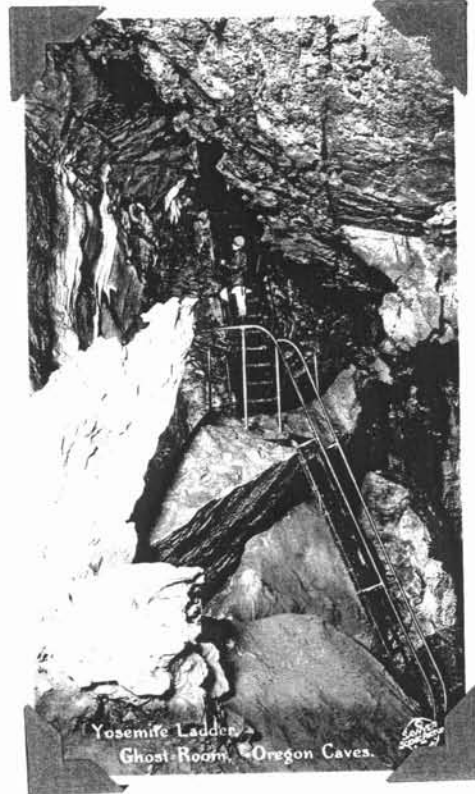
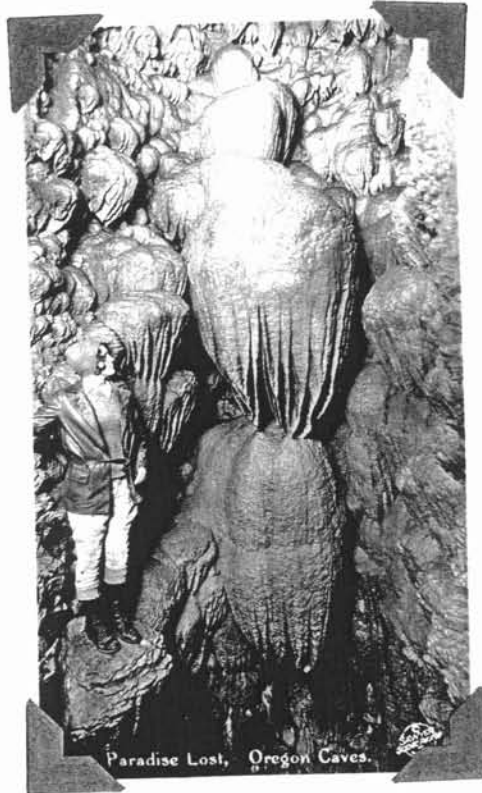
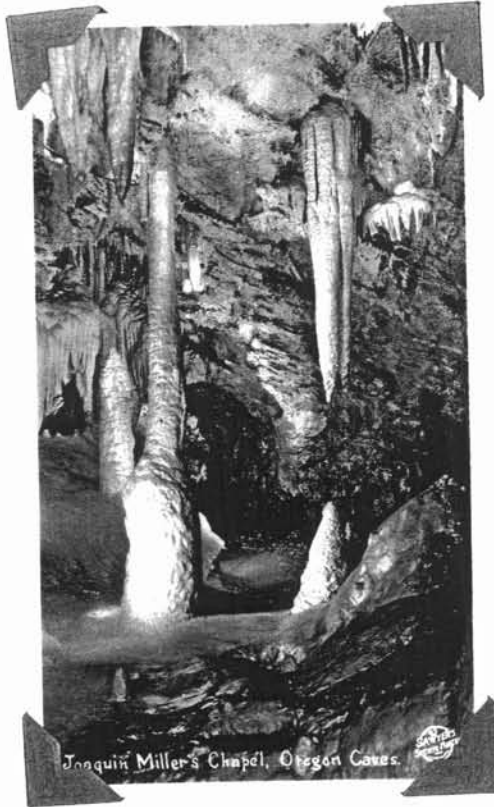
During the last half of the enrollment period free movies were shown the boys at both camps at least one night a week.

Each weekend liberty parties were sent in to Medford or Klamath Falls. From fifty to one hundred boys took advantage of this transportation each time. The trucks for these parties were furnished by the Park Service ECW with the gasoline furnished by the Army.

Once a week boxing and wrestling programs were put on at the camps, and quite proficient boxers and wrestlers were developed among the boys. Horseshoes and volley ball and other general sports were indulged in at all camps. As fishing licenses were not required in the Park, many of the boys spent their spare time catching fish to augment the mess. Each camp was supplied with a well equipet library.

Religion

An attempt was made to have religious services at the camps as often as ministers could be obtained in the outlying towns, obtaining repr sentatives from the various denominations. The Army Chaplain from the District Headquarters also visited the camps regularly. Wherever possible and when enough of the boys desired it liberty trucks were furnished on Sunday morning to take them to church.



SCENES IN THE OREGON CAVES

EMERGENCY
CONSERVATION
WORK



SECTION C

ANALYSIS OF WORK PROJECTS



PRIORITY NUMBER	ECW CLASS	PROJECT DESIGNATION	LOCATION OF PROJECT	DATE	DATE	COMPLETED	ENROLLEE	AMOUNT OF WORK	UNIT	COST DATA			EST.	NOTES
				WORK STARTED	WORK COMPLETED	PER CENTAGE	MAN DAYS	PLANNED	DONE	OF WORK	LABOR (a)	OTHER (b)		
1a	53b	Landscaping, fine grading	Rim and Gov't. Camp	8/27	10/12	100	243	175	175 cu yd	301.76	133.75	435.60		(a)
1b	53c	Landscaping, soil preparation	Rim and Gov't. Camp	6/25	-----	88	2673	11500	10144 sq yd	1315.41	849.89	2165.30		(c)
1c	53d	Landscaping, seeding and sodding	Rim and Gov't. Camp	7/11	10/12	100	497	6	6 acre	857.52	686.16	1543.67		(c)
1d	53e	Landscaping, planting trees and shrubs	Rim and Gov't. Camp	5/15	10/19	100	1742	9545	9545 no.	674.30	838.75	1713.05		(c)
2	39a	Insect Pest Control	Entire Park	4/27	6/14	100	810	31000	31000 acre	1477.45	475.47	1953.22	2900.00	(d)
3	4	Roadside cleanup	West and south entrances roads and Rim to Government Camp.	5/15	-----	99	3898	19	18.7 mile	2352.85	1903.76	4256.71	3000.00	(e)
4	13a	Truck trail	Union Peak and Castle Creek Watchman Loop	7/9	10/10	100	1068	8	8 mile	1254.43	1053.08	2307.51	2500.00	(f)

(a) Includes cost of facilitating and supervisory personnel.

(b) Includes all other costs chargeable to a job not included in labor of supervisory and facilitating personnel.

(c) In the original program Landscaping was set up as one item with a contemplated total of work to be done of four acres and an estimated cost of \$3000.00. However in the revised Form ECW 7 Landscaping was split into several headings, as shown, and the original estimates were accordingly revised. In the approved program it had been planned to have all Landscaping handled from Camp Annie Spring, but when work was started it was found to be more advantageous to handle this from both the Crater Lake Camps. However, in order to simplify cost records all costs were kept for the projects as a whole, hence the figures shown in this summary include all landscape costs for both camps. Project 1a includes 198 man days and 150 cu yds of grading, project 1b includes 1743 man days, and 4144 sq yds of soil preparation, project 1d includes 1528 man days and 8600 trees and shrubs moved and planted, all of which was done by crews from Camp Wineglass, but in order to make the accomplishments and man days comparable with the costs these figures are included with those for Camp Annie Spring. In addition a certain amount of maintenance was necessary to keep the transplanted trees, shrub and sod from dying. This required 26 man days by crews from Camp Annie Spring and 204 man days by crews from Camp Wineglass, which figures are included in the man days for project 1c. This is a minor program change approved by the Park Superintendent.

(d) It was originally planned to handle the work in the Western half of the Park from Camp Annie Spring and the eastern half from Camp Wineglass. However when work was actually started it was found that the best results could be obtained by handling the entire insect control from Camp Annie Spring. The insect infestation was not as serious as was originally contemplated, hence the work was completed sooner than estimated. The number of trees requiring treatment to complete this work have been tabulated in Table XXV of Section E.

(e) After work was started on this project it was found necessary to add the portions of the highway from the Annie Spring checking station to Government Camp and thence to the Rim, making a total of 19 miles to be cleaned up. As no specific instructions had been given as to the type of cleanup to use the procedure outlined in Supplement 7 of the ECW handbook was used as a basis for this work. Subsequent events proved that this was too thorough a method to be applied and in a few cases it was necessary to restore some of the materials raked into piles for disposal. In general the work on roadside cleanup has been too thorough, but it is believed that within a year or so nature will have corrected the artificial condition thus created and that the roadside areas will have less of a parklike and more of a natural appearance. For approval on additional six miles noted above see approved drawing CL 5026.

(f) These trails completed the loop around Union Peak and a connecting link between the Rim Road at a point below the Watchman to the Castle Creek Motorway. They were laid out over very easy grades, altho the terrain was quite rugged in places. As stated in Forester Shirley Allen's report of September 18th "With the completion of the above mentioned truck trails, no point in the Park is more distant than two miles from a motor route. This is a usual coverage...."



Watchman-Castle Creek Loop Truck Trail
September 11th, 1934



Enrollee Dougherty operating bull-dozer
on Watchman-Castle Creek Loop
Truck Trail
October 5th, 1934

SCENES ALONG THE WATCHMAN-CASTLE CREEK LOOP TRUCK TRAIL, BUILT WITH
CCC ENROLLEES FROM CAMP ANNIE SPRING UNDER SUPERVISION OF FOREMAN FRED
C. PATTON ANNIE SPRING PROJECT NO.4



Culvert along Union Peak Loop Truck Trail
installed with CCC Enrollees from Camp Annie
Spring under supervision of Foreman E.L. Johns
Annie Spring Project No.4
September 15th, 1934



Culvert along Watchman-Castle Creek Loop
Truck Trail installed with CCC Enrollees
from Camp Annie Spring under supervision
of Foreman Fred C. Patton
Annie Spring Project No.4

CULVERTS INSTALLATIONS ALONGTRUCK TRAILS

PROJECT ANALYSIS
CAMP ANNIE SPRING NP-1
THIRD ENROLLMENT PERIOD

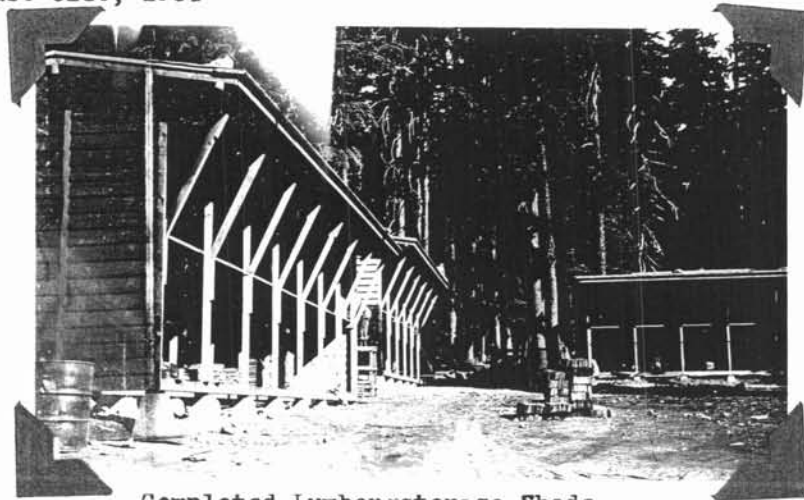
PAGE 2

PARK PRIORITY NUMBER	ECW CLASS.	PROJECT DESIGNATION	LOCATION OF PROJECT	DATE WORK STARTED	DATE WORK COMP.	COMP. PER CENT	ENROLLEE MAN DAYS	AMT. OR PLANNED	OR DONE	UNIT OF WORK	COST LABOR (a)	DATA OTHER (b)	TOTAL	EST.	NOTES
5	1	Telephone lines	Government Camp to South boundary and to Lost Creek	5/21	9/12	100	217	18	18	mile	269.60	73.98	343.58	1500.	(g)
6	28	Lumber storage sheds	Government Camp	7/30	10/10	100	488	3	3	no.	244.57	1725.78	1970.35	2500	(h)
7	28	Snowshoe cabins	National Creek, Bear Creek, Maklak Spring	7/30	10/19	100	573	3	3	no.	799.52	995.29	1794.81	1200	(i)
8	46c	Bank sloping	West and south entrance and around Lost Creek	7/16	-	97	2622	121000	116800	sq.yds.	1266.50	462.37	1728.89	2500	(j)
9	14b	Foot trails	Rim to Lake and Lodge to Garfield Peak	6/11	19/17	100	324	11	11	mile	93.70	95.40	189.10	250.00	(k)
10	29	Corral	Government Camp	-	-	-	-	-	-	-	-	-	-	-	(l)
11a	31b	Water systems, pipe lines	Bybee Creek, Bear Creek and National Creek.	8/11	10/15	100	55	1231	1231	feet	82.83	110.77	193.60		(m)

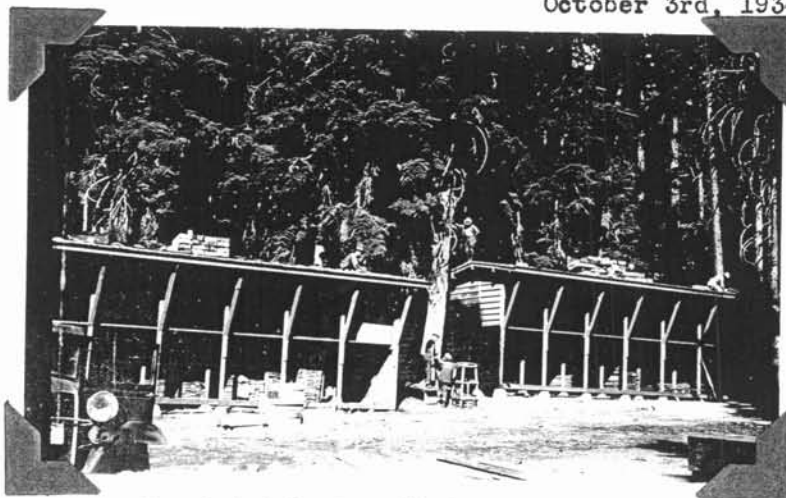
- (g) Originally it was planned to reconstruct these lines, but upon closer investigation it was felt that reconstruction was not warranted at the present time, and that adequate improvement in the service could be obtained by proper maintenance of these lines at a great saving in costs. Hence all work on this project was maintenance, there being no new construction included. Minor project change approved by Park Superintendent.
- (h) After a discussion with the Division of Plans and Design it was decided to make these buildings 24 x 42 feet instead of 20 x 30 feet of the original program. The Park Superintendent approved decreasing the number from five to three. This work was done under the supervision of Foreman Foy exclusively with L. E. M. enrollees, thus materially reducing the costs over what would have been necessary if force account labor had been required.
- (i) Certain of the work at National Creek cabin (originally) called Oasis Spring had already been done in the First Enrollment Period, hence the first job was to complete this structure. Due to the fact that no place could be found along Sun Creek to properly hide a cabin the location was changed to Maklak Spring. As Bear Creek Cabin site was closer to Camp Wineglass than it was to Camp Annie Spring it was built with crews from this encampment. However in order to keep the cost figures in a simple form all costs for the three cabins were included in the one figure. In order to make accomplishments and man days comparable with the costs 285 man days of labor spent by Camp Wineglass crews are included in the man day figure for this project.
- (j) This work was carried to completion along the South Entrance Highway and practically to completion along the West Highway, providing more adequate drainage along the gutter ways and greatly enhancing the beauty of these roads. In the original program these units were expressed in miles of highway, but the revised ECW 7 form called for the units in square yards, which are the figures used in this report. A portion of this work, around the entrance to Camp Wineglass could be handled more readily from that camp. In order to simplify cost accounting all of these costs were included in those of Camp Annie Spring, hence 5000 square yards of the total yardage shown was accomplished with 324 man days of labor by men from Camp Wineglass, which figures are included in the values shown for this project. This work was performed by Camp Wineglass and was a minor project addition, approved by the Park Superintendent.
- (k) Further consideration of the problem made it seem unnecessary to do this work during the present enrollment period, as it was felt that there were other projects that were more essential to the Park. However it was necessary to maintain trails from the Rim to the Lake and from the (dent) Lodge to Garfield Peak. The charges for this maintenance work were made against this project. Minor project change approved by Park Superintendent.
- (l) All work and charges on this project were transferred to Camp Wineglass.
- (m) These water systems were for the five snowshoe cabins built during this and the First Enrollment Period. Pipe lines were installed at National Creek, Bybee Creek and Bear Creek Cabins. At Red Blanket Creek a well was dug approximately 100 yards from the cabin. At Maklak Spring a well was dug inside the cabin and a pitcher type pump installed for pumping the water. The systems at Bear Creek and Maklak Spring were built by crews from Camp Wineglass, but all charges were made against this project in order to simplify the cost records. To make the cost and man days and accomplishment records comparable 560 feet of pipe laid and one well dug by Camp Wineglass crews with 33 man days of labor are included in the figures for this project.



Framework of Lumber storage shed
Government Camp
August 31st, 1934



Completed Lumber storage Sheds
Government Camp
October 3rd, 1934



Completed Lumber Sheds
Government Camp
October 3rd, 1934

LUMBER STORAGE SHEDS BUILT AT GOVERNMENT CAMP WITH CCC ENROLLEES FROM CAMP ANNIE SPRING, UNDER SUPERVISION OF FOREMAN L.N. FOY. PROJECT NO.6



Painting Lumber Sheds
with spray gun
October 3rd, 1934

LUMBER STORAGE SHEDS BUILT AT GOVERNMENT CAMP WITH CCC ENROLLEES FROM
CAMP ANNIE SPRING, UNDER SUPERVISION OF FOREMAN L.N. FOY. PROJECT NO.6



Start of construction of National Creek Snowshoe
Cabin, Third Enrollment Period
August 19th, 1934



Complete Cabin
September 4th, 1934



Cabinet installed in cabin
September 4th, 1934

NATIONAL CREEK SNOWSHOE CABIN STARTED IN FIRST ENROLLMENT PERIOD AND
COMPLETED WITH ENROLLEES FROM CAMP ANNIE SPRING UNDER SUPERVISION OF
FOREMAN E.K. LOOSLEY DURING THIRD ENROLLMENT PERIOD
ANNIE SPRING PROJECT NO.7

PROJECT ANALYSIS
 CAMP ANNIE SPRING NP-1
 THIRD ENROLLMENT PERIOD

PAGE 3

PARK PRIOR ITY	ECW 7 CLASS.	PROJECT DESIGNATION	LOCATION OF PROJECT	DATE WORK STARTED	DATE WORK COMP	COMP PER CENT	ENROLEE MAN DAYS	AMOUNT OF WORK PLANNED	WORK DONE	UNIT OF WORK	COST OF LABOR (a)	DATA OTHER (b)	TOTAL	EST.	NOTES
11b	31c	Water systems, wells	Red Blanket Creek and Maklak Spring	9/18	10/3	100	12	2	2	no.	3.50	21.09	24.59	-	(n)
12	22	Public Camp ground clearing	Rim Area and Annie Spring	5/14	-	80	384	25	20	acre	370.05	133.48	503.53	250.00	(n)
13	24	Public Camp Ground Latrines	Whitehorse and Cold Spring	9/18	10/12	100	60	4	4	no.	39.40	159.50	198.90	200.00	(n)
14	25b	Public camp ground water systems	Whitehorse and Cold Spring	-	-	100	-	2	2	no.	20.00	32.84	52.94	100.00	(n)
15	26b	Waste disposal pits	Whitehorse and Cold Spring	7/17	9/21	100	9	2	2	no.	0.00	23.21	23.21	25.00	(n)
16	27	Other Camp ground facilities	Rim camp ground and Annie Spring	6/4	-	70	204	20	14	no.	140.75	293.68	434.43	400.00	(o)
17	44a	Surveying, linear	Throughout Park on all projects	5/14	10/16	100	223	100	100	mile	1443.80	168.61	1612.41	450.00	(p)
18	44a	Boundary survey and marking	Annie Creek Addition	-	-	-	-	6	-	mile	-	-	-	150.00	(q)
19	51	Corrals	Natioanl Creek, Red Blanket Creek, Maklak Spring, Bybee Creek Bear Creek	9/3	-	60	84	5	3	no.	62.40	21.49	83.89	130.00	(r)

- (n) It was originally proposed to clear public camp grounds at Lost Creek under this project. However this work was also covered under Park Priority 7 of Camp Wineglass Program and this work was done on that program and is discussed under Camp Wineglass. Work was completed on the clearing of public campgrounds at the Rim Area and at Annie Spring. The public campground at Sun Creek is to be abandoned due to its proximity to the sacred area hence latrines were only built for Whitehorse and Cold Spring Campgrounds. Pits were dug for these latrines and the buildings were built at the garage at Camp Annie Spring, stained and then disassembled and stored for the winter, as they were not completed until too late for use this season. The only work done on the water systems consisted of maintenance on the Whitehorse pipe line as it was felt that the time originally called for on the program could be used to better advantage elsewhere. The waste disposal pits at Whitehorse and Cold Spring were according to the program.
- (o) No benches nor tables were built under this project during this period. Restricted camping sites were placed throughout the campground at the Rim there now being a total of approximately 25 such units complete in every detail. Ten fire places were built at the Rim Area Public Camp ground and three at Annie Spring Public Camp Ground.
- (p) The survey crews laid out all of the projects throughout the park built in connection with ECW work, and did the necessary mapping and plotting for same, except that plotting for insect control work was done by members of the insect control crews. The survey crew also laid out lines and grades on PWA and NPS projects and prepared several maps for Park survey purposes.
- (q) No work was done on this project during this period as it was felt that the time could be more advantageously spent on other projects.
- (r) Corrals were built at National Creek, Red Blanket Creek and Bybee Creek Cabins. At Bear Creek and Maklak Spring Cabins, the corrals were not erected, but wire and staples were stored in the cabins to permit erection next year.



Cabin site and spring excavation
September 19th, 1934



Target boards in place
September 24th, 1934



Rear view of roof framing in place
September 29th, 1934

PROGRESS PICTURES, MAKLAK SPRING SNOWSHOE CABIN BUILT WITH CCC ENROLLEES
FROM CAMP ANNIE SPRING UNDER SUPERVISION OF FOREMAN E.K. LOOSLEY
ANNIE SPRING PROJECT NO.7



Front view, roof framing in place
September 29th, 1934



Cabin nearly complete, rear view
October 6th, 1934

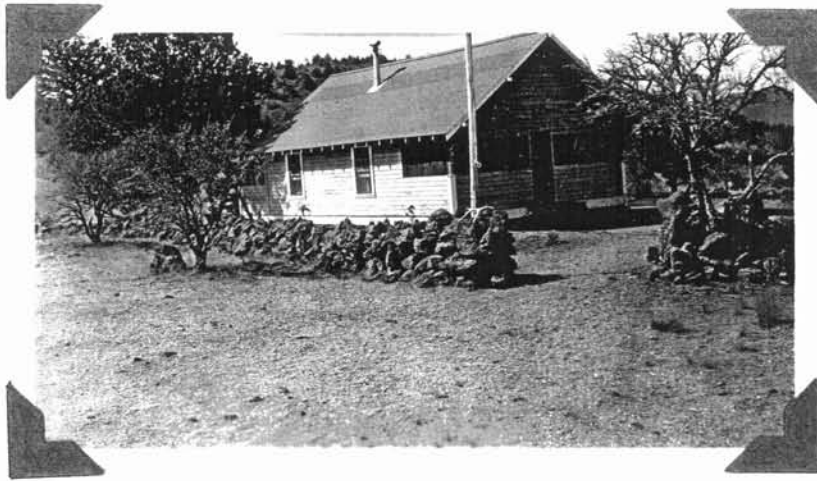
PROGRESS PICTURES, MAKLAK SPRING SNOWSHOE CABIN BUILT WITH CCC ENROLLEES
FROM CAMP ANNIE SPRING UNDER SUPERVISION OF FOREMAN E.K. LOOSLEY
ANNIE SPRING PROJECT NO.7

PROJECT ANALYSIS
 CAMP ANNIE SPRING NP-1
 THIRD ENROLLMENT PERIOD

PAGE 4

PARK PRIOR- ITY	ECW 7 CLASS.	PROJECT DESIGNATION	LOCATION OF PROJECT	DATE WORK STARTED	DATE WORK COMP.	COMP. PER CENT	ENROLLEE MAN DAYS	AMOUNT OF WORK PLANNED	AMOUNT OF WORK DONE	UNIT OF WORK	COST LABOR (a)	DATA OTHER (b)	TOTAL	EST.	NO- TES
20	-	Rodent Control	Rim Area and Govern- ment Camp	-	-	-	-	3	-	acre	-	-	-	25.00	(q)
21	47c	Bridges, vehicle	Castle Creek Truck Trail	-	-	-	-	2	-	No.	-	-	-	125.00	(q)
22	48c	Fish restocking	Crater Lake	7/16	-	18	79	300000	54000	No.	-	-	-	250.00	(s)
23	11	General cleanup, other than fire prevention	Area around Govern- ment Camp	10/18	-	20	136	5	1	acre	148.00	52.54	200.54	-	(t)
24	18	Toolboxes for ECW use	All projects	8/6	8/16	100	41	14	14	No.	-	-	-	-	(u)
25	8	Fighting forest fires	Where needed	7/19	9/15	100	1140	-	1140	M.D.	467.30	131.53	598.83	-	(v)
26	9	Holding men in camp for fire pre-suppression	Camp Annie Spring	9/13	9/15	100	35	-	35	M.D.	-	-	-	-	(w)

- (q) No work was done on this project during this period as it was felt that the time could be more advantageously spent on other projects.
- (s) But 54000 fish were planted this year, instead of the 300,000 contemplated because it was impossible to obtain a greater number from the fish hatcheries. The only charges incurred on this project were for gasoline and oil used on the trucks. Due to an oversight in bookkeeping these charges were not segregated from other gasoline usage.
- (t) This was a minor project approved by the Park Superintendent and was not included on the original program. Costs for this project were diverted from other projects. In connection with PWA building activities and as a result of an accumulation of trash over the last several years heaped in piles immediately to the south of Government Camp it was felt necessary to clean these areas as they created a very unsightly condition.
- (u) In order to properly care for the tools and small equipment being used on various ECW projects located throuth the Park some distance from the Camps fourteen sturdy tool boxes were built and provided with padlocks. Due to an oversight in bookkeeping these charges were not segregated from those of other projects.
- (v) Fires were fought at Algoma and Shaw Bertram on the Klamath Indian Reservation, July 19th and 20th and August 5th and 6th respectively: and at Prospect and Butte Falls, on State Forest Lands on August 8th to 11th inclusive and September 5th to 11th inclusive, respectively.
- (w) Men held in camp as reserve during the Prospect Fire of August 8th to 11th, inclusive.



RANGER STATION AND PUBLIC CAMP GROUND
AT INDIAN WELLS
LAVA BEDS NATIONAL MONUMENT

WINEGLASS

PARK														
PRIOR- ITY	ECW 7	PROJECT DESCRIPTION	LOCATION OF PROJECT	WORK START	WORK COMP.	PER CENT	MAN DAYS	PLAN DONE	UNIT	LABOR COSTS	OTHER COSTS	TOTAL COSTS	ESTIMATED COSTS	NOTES
										(a)	(b)			
1	4	Roadside Cleanup	East entrance to High- way to Kerr Notch	5/14	9/7	100	2889	10	10 mile	1804.31	1363.83	3168.14	2000.00	(c)
2	39a	Insect pest control	East half of park	-	-	-	-	-	-	-	-	-	-	(d)
3	13a	Truck trails	Bear Creek Spur and Timber Crater Loop	5/13	10/12	100	1052	10	10 mile	615.88	474.37	1090.25	600.00	(e)
4	3	Removal of fire hazard	Area of big blowdown near Wineglass on Rim Road	5/1	-	25	503	2	1 acre	287.80	235.08	522.88	250.00	(f)
5	1	Telephone lines	Lost Creek to MtScott	4/27	9/14	100	322	12	12 mile	-	95.54	95.54	150.00	(g)
6	14a	Trails, Horse	Rim Road to Vidae Falls	8/27	10/16	100	716	2	2 mile	538.50	202.65	741.51	1200.00	(h)
6a	14a	Trails, horse, maintenance	Rim to Lake	5/1	7/9	100	463	4	4 mile	292.40	161.27	453.67	-	(i)
7	22	Public camp ground clear- ing	Lost Creek camp ground	5/3	5/29	20	183	5	1 acre	123.85	80.10	203.95	200.00	(j)
8	51	Corrals	Lost Creek Barn	-	-	-	-	1	- no.	-	-	-	50.00	(k)
9	27	Other Campground facili- ties	Lost Creek Camp ground	-	-	-	-	10	- no.	-	-	-	300.00	(l)

(a) Includes costs of facilitating and supervisory personnel.

(b) Includes all other costs chargeable to the job not included in labor charges of supervisory and facilitating personnel.

(c) The road from the East Entrance to Kerr Notch was cleaned up in a very satisfactory manner. Due to the difficulty of transporting men no attempt was made to clean up the North Entrance road and it was dropped from the program of the Third Enrollment Period. Minor project change approved by Park Superintendent.

(d) As stated under analysis of Camp Annie Spring Projects this project in its entirety was transferred to that Camp.

(e) Due to a rerouting of these trails the length was increased from eight to ten miles, minor program change approved by Park Superintendent. The trails built consisted of a 3.3 trail to Bear Creek from the Pelican Bay Road and a loop around Timber Crater 6.7 miles long. The roads lay thru pumice material most of the way, and except for short stretches through rock were easy to build.

(f) According to instructions received from the Director these values are to be reported to the nearest whole number. The actual amount cleaned was less than one half acre. The major portion of this cleanup was abandoned during this period as the new Rim Road does not pass through this area, and hence it will be eliminated from public view.

(g) This work was a maintenance of the old lines, rather than new construction, as it was felt that it would be more economical to rebuild the present line rather than erect a new one.

(h) Originally this project called for a trail from the Rim Road to Sun Notch and thence to Garfield Peak, however the Division of Plans and Designs did not wish the trail to go through the sacred area of Sun Notch hence the terminus was changed to a point on the Rim Road below Vidae Falls. The trail was carried to the top of Vidae Falls, a natural beauty spot and terminated there for the Third Enrollment Period. This cut the original distance from four miles to two miles. Minor project change approved by Park Superintendent.

(i) Due to the heavy snow falls it is necessary each year to clear the trails for traffic. Crews from Camp Wineglass cleared portions of the trail from the Rim to the Lake, the balance of which was cleared by crews from Camp Annie Spring. (See analysis of Camp Annie Spring Projects.) New minor project approved by the Park Superintendent.

(j) Due to the change contemplated in the location of the new Rim Highway but one acre of this project was cleaned up instead of the five originally contemplated.

(k) As there was but little use for horses at the Park this year no work was done on this corral other than the storing of wire and staples so that a corral may be erected next spring.

(l) Due to the proposed rerouting of the Rim Highway the location of the public camp ground at Lost Creek may be changed. Hence no new facilities were installed at this location.



Enrollee Kraut with bulldozer
September 4th, 1934



Enrollee Kraut with bulldozer
September 11th, 1934

SCENES ALONG TIMBER CRATER LOOP TRUCK TRAIL, BUILT WITH
CCC ENROLLEES FROM CAMP WINEGLASS UNDER SUPERVISION OF
FOREMAN J.P.HOGENSON
CAMP WINEGLASS PROJECT NO.



Enrollee using Air
Jack Hammer in Construction of
Trail
September 24th, 1934

VIDAE FALLS TRAIL, BUILT WITH CCC ENROLLEES FROM CAMP
WINEGLASS UNDER SUPERVISION OF FOREMAN H.J. CHANDLER
WINEGLASS PROJECT NO.

WINEGLASS

PARK PRIOR- ITY	EC# 7	PROJECT DESCRIPTION	LOCATION OF PROJECT	WORK START	WORK COMP.	PER CENT	MAN DAYS	PLAN	DONE	UNIT	LABOR COSTS	OTHER COSTS	TOTAL COSTS	ESTIMATED COSTS	NOTES
											(a)	(b)			
10	47c	Bridges, vehicle	Bear Creek Truck Trail	-	-	-	-	1	-	no.	-	-	-	100.00	(m)
11	29	Corral	Government Camp	8/13	0	5	34	.1	-	mile	62.80	443.33	506.13	300.00	(n)
12	28	Snowshoe cabin	Bear Creek	7/30	10/19	100	285	1	1	no.	-	-	-	-	(o)
13a	31b	Water system pipeline	Snowshoe Cabin	10/1	10/8	100	10	560	560	feet	-	-	-	-	(o)
13b	31c	Water systems, wells	Maklak Spring Snowshoe Cabin	9/17	9/17	100	2	1	1	no.	-	-	-	-	(o)
14	51	Corrals	Bear Creek Snowshoe Cabin	-	-	-	-	1	-	no.	-	-	-	-	(o)
15	11	General Cleanup other than fire prevention	Near Government Camp	4/27	10/12	100	485	6	6	acre	269.80	106.33	375.93	-	(p)
16	31b	Water system, pipe line	Above Government Camp	10/3	10/11	100	21	100	100	feet	46.00	13.76	59.76	-	(q)
16a	31c	Water systems, wells and water holes	Above Government Camp	10/3	10/16	100	19	100	7	no.	1.50	10.46	11.96	-	(q)
17a	53b	Landscaping, fire grading on road slopes and parking area	Government Camp and Rim Area	5/21	6/15	100	199	150	150	cu.yds.	-	-	-	-	(o)
17b	53c	Landscaping, soil preparation.	Government Camp and Rim Area	5/1		83	1743	5000	4144	sq.yds.	-	-	-	-	(o)

(a) Includes costs of facilitating and supervisory personnel.

(b) Includes all other costs chargeable to the job not included in labor charges of supervisory and facilitating personnel.

(m) Due to a change in the routing of this truck trail it was found unnecessary to erect the proposed bridge.

(n) As discussed under the Project Analysis for Camp Annie Spring this project in its entirety was transferred to Camp Wineglass. Due to the delay in obtaining approved drawings on this project, together with the length of time required to publish and award bids for materials they were not received until too late to be erected this year. Hence the only work on this project consisted in laying out the corral, digging the fence posts holes and purchasing the required materials.

(o) These projects were part of the Camp Annie Spring program, and as discussed in the Project Analysis is for that camp all charges were included on that camp's program. The man days and accomplishment data are included in this report for record purposes only, as noted in Camp Annie Spring Project Analysis these figures have been included in the corresponding figures for the respective projects on that Analysis.

(p) This was a minor project approved by the Park Superintendent and was not included on the original program. Costs for it were diverted from other projects. In connection with PWA building activities and as a result of an accumulation of trash over the last several years, heaped in piles immediately to the south of Government Camp, it was felt necessary to clean these areas as they created a very unsightly condition. In addition the work of removing the old Administration Building was included in this project.

(q) Due to the water shortage, difficulty was experienced in having an ample supply for Government Camp. It was therefore necessary to build about 100 feet of pipe line and to clean out and build barriers around seven springs. It was also necessary to cover the storage tank where it had dry-rotted. Minor project approved by the Park Superintendent, costs of which were diverted from other projects.



Spike camp used by the enrollees in the construction of Bear Creek Snowshoe Cabin.
September 11th, 1934



Site of Bear Creek Snowshoe Cabin
September 4th, 1934



Preparing timber for use in Bear Creek Snowshoe Cabin
September 20th, 1934

PROGRESS PICTURES, CONSTRUCTION OF BEAR CREEK SNOWSHOE CABIN, BUILT WITH CCC ENROLLEES FROM CAMP WINEGLASS UNDER SUPERVISION OF FOREMAN H.H. WILLIAMS ANNIE SPRING PROJECT NO.



September 28th, 1934



October 6th, 1934



October 12th, 1934

PROGRESS PICTURES, CONSTRUCTION OF BEAR CREEK SNOWSHOE CABIN, BUILT WITH
CCC ENROLLEES FROM CAMP WINEGLASS UNDER SUPERVISION OF FOREMAN H.H. WILLIAMS
ANNIE SPRING PROJECT NO.

WINEGLASS

PARK	PRIOR-	ECW	PROJECT DESCRIPTION	LOCATION OF PROJECT	WORK START	WORK COMP.	PER CENT	MAN DAYS	PLAN	DONE	UNIT	LABOR COSTS	OTHER COSTS	COSTS TOTAL	ESTIMATED COSTS	NOTES
		7										(a)	(b)			
17c	53d		Landscaping, sodding and seeding	Government Camp and Rim Area	8/6	9/12	100	204	4	4	acre	-	-	-	-	(o & r)
17d	53e		Landscaping, moving and planting trees	Rim Area and Government Camp.	5/10	9/21	100	1528	8600	8600	no.	-	-	-	-	(o)
18	13c		Roads, highway maintenance, setting snow poles	All main roads in park	9/24	10/16	100	41	40	40	mile	63.50	28.75	92.25	-	(s)
19	8		Fighting forest fires	Where needed	7/19	9/17	100	672	672	672	M.D.	116.80	60.27	177.07	-	(t)
20	9		Fire pre-suppression	Camp Wineglass	9/10	9/17	100	74	74	74	M.D.	6.28	-	6.28	-	(u)
21	13c		Roads, highway maintenance	Rim Road	4/17	4/26	100	436	8	8	mile	-	4.42	4.42	-	(v)
22	31a		Water system, Storage facilities	Mt. Scott	9/3	9/4	100	38	1	1	M gal.	160.58	23.00	83.58	-	(w)

- (o) These projects were part of the Camp Annie Spring program, and as discussed in the Project Analysis for that camp all charges were included on that camp's program. The man day and accomplishment data are included in this report for record purposes only, as noted in Camp Annie Spring Project Analysis these figures have been included in the corresponding figures for the respective projects on that Analysis.
- (r) A certain amount of maintenance was required to keep the transplanted growth from dying. All of the work covered by this project was spent on this maintenance. Minor project change approved by the Park Superintendent.
- (s) In order to open the roads next spring with the snow p low it will be necessary to set poles to act as guide markers. This is a minor maintenance project approved by the Park Superintendent, costs for which were diverted from other projects.
- (t) Fires were fought at Algoma (July 19th and 20th) and at Shaw Bertram (August 5th and 6th) on the Klamath Indian Reservation and at Prospect (August 8th, to 11th, inclusive.) On State Forest Lands.
- (u) Men held in camp as reserve during the Butte Falls Fire of September 5th to 11th, inclusive.
- (v) The melting snow caused considerable damage on the old Rim Highway, making it hazardous for travel. Minor project approved by the Park Superintendent, costs for which were diverted from other projects.
- (w) Due to the light snowfall no snow fall no snow collected in the 1000 gallon storage tank located at the top of Mt. Scott for the water supply for the Ranger stationed here. It was therefor necessary to move this tank approximately 1000 feet to a point where it will gather snow even during period of abnormally light snow fall. Apparently an erro has been made in computing the costs of this project, as the figures given are far out of line with what they should be. There was no way of detecting where this error was made.

UNITED STATES
DEPARTMENT OF THE INTERIOR
NATIONAL PARK SERVICE
CRATER LAKE NATIONAL PARK
CRATER LAKE, OREGON

OFFICE OF THE SUPERINTENDENT

October 20, 1934

Mr. Geo. F. Whitworth
Park Engineer for ECW
Crater Lake National Park
Medford, Oregon

Dear Mr. Whitworth:

In accordance with your request of Sept. 18, 1934, we are submitting a narrative report of the activities of this camp for the period July 1, 1934, to termination of the third enrollment period.

During the month of July the work projects at this camp consisted of reduction of fire hazard in the area at the Caves, making preliminary surveys for water system at the Caves, the building of an entrance road to the CCC camp, construction of a tent house for the Ranger at Caves, fighting forest fire and completing construction of CCC camp. In the reduction of fire hazard, $2\frac{1}{4}$ acres were cleaned up during the month.

In the preliminary surveys for water system about two miles of line were surveyed in determining an adequate supply suitable located for the purpose of supplying the cave area.

The entrance road to camp required the relocation and construction of 500 ft. of road leading from the camp to the Caves highway. This was done to avoid low marshy ground along the creek which runs between the camp and the highway.

The completing of CCC camp consisted of:

1. Building of latrines, incinerator, garbage stand.
2. Installing plumbing and electric wiring in camp buildings and in grounds.
3. Completing excavation of well and curbing same.
4. Erecting 900 gal. wood stave tank and building platform for same.
5. Building of tent platforms for Foremen and for Infirmary.
6. Hauling dirt and gravel for filling low rough ground in site. Grading and graveling road through camp.
7. Cleaning up fire hazard in and around camp and constructing a fire break for a distance of 50 ft. around camp.

In the month of August the work projects consisted of continuing to remove all fire hazard at Caves--of this, there was $1\frac{1}{2}$ acre cleaned up during the month.

The beginning of the construction of a utility road at the Caves.

The construction of an overflow line from the septic tank at the Caves--this consisted of excavating 700 ft. of dirt and laying 700 ft.

of sewer tile and excavating 100 ft. of seepage trench.

The continuing of survey for water system--this consisted of running two miles of line in making final location for pipe line.

A bridge was reconstructed across the creek at the CCC camp in order to make it safe and adequate to handle the traffic into the camp and to avoid having the trucks ford the creek. This was injurious to the brake lining and spring shackles of the trucks.

At the CCC camp the clean up work was continued.

About four to five thousand shakes were prepared for proposed winter construction.

A powder house was built.

A detail of six men were on fire suppression for two days and nights.

In the month of Sept. the reduction of fire hazard was continued and one more more was cleared up.

The utility road and garbage pit at the Caves were completed.

The foot trail from the exit of the Caves was widened at several points and about 500 ft. at the lower end was relocated and constructed.

An additional one half mile of survey was made in connection with the water system for the purpose of trying to land marks in order to obtain a right of way.

Work at the CCC camp consisted of preparing under pinning for the new 200 man camp to be constructed and in making a survey of the proposed camp site and planning the location of the buildings thereon. This time was charged to the Army.

Respectfully submitted,
I. H. Porter
Prin. Foreman
(Engineering)



Messhall and Enrollees' quarters
Camp Oregon Caves, built with
CCC Enrollees from this
Camp
Oregon Caves Project No.
September 8th, 1934

EMERGENCY CONSERVATION WORK



SECTION D

REPORT OF PROJECT SUPERINTENDENTS TO
THE PARK ENGINEER FOR E.C.W. FOR THE
LAST HALF OF THE
THIRD ENROLLMENT PERIOD



UNITED STATES
DEPARTMENT OF THE INTERIOR
NATIONAL PARK SERVICE
CRATER LAKE NATIONAL PARK
MEDFORD, OREGON

OFFICE OF THE SUPERINTENDENT

October 20, 1934

Mr. Geo. F. Whitworth
Park Engineer for ECW
Crater Lake National Park
Medford, Oregon

Dear Mr. Whitworth:

In accordance with your request of Sept. 18, 1934, we are submitting a narrative report of the activities of this camp for the period July 1, 1934, to termination of the third enrollment period.

Since our report of July 1, 1934, we are able to report the completion of several of our projects as well as the near completion of all of them.

ROADSIDE CLEANUP

In the first three months, or rather two, for the actual work on the projects covered about two, we did most of our Roadside Cleanup. In this we followed the ECW Handbook as well as guidance through Park Supervision. In this work we tried to do a thorough job of cleaning, perhaps cleaner than necessary.

Our burning period was very short, therefore we were compelled to leave a great deal of debris in piles for future burning, leaving a lot of work to do in September. However, I am glad to report that all of the South Entrance has been burned.

The West Entrance is all completed. On this Entrance there was very little to do. What we did remove was cut into wood.

All burning to be done between Annie Spring and Government Camp, and between Government Camp and the Rim area has been completed.

In our Cleanup work we have probably cut 500 cords of wood, the most of which we hauled to Government Camp.

TRUCK TRAILS

Union Peak Motorway.

The Union Peak Loop connection, amounting to 4.2 miles was completed early in September. This, for the most part, was difficult construction. We had to tie two ends together, and only one place to go. This is by far the roughest and rockiest part of the Park. It is a succession of rocky ridges, all running down from Union Peak. This motorway (new construction) has a maximum grade of 12%, and only one short curve. We used the Engineer about one day in checking grades.

Watchman-Castle Creek Motorway.

The Watchman-Castle Creek Motorway is 3.8 miles long, beginning high up on the Rim Road and running in a westerly direction to the Castle Creek Motorway, otherwise known as Motorway No. 2. Here again we found a minimum grade of 6% and a succession of sharp breaks. This road was completed in about four weeks' time with a crew of twelve men. Here we have a maximum grade of 11% with easy grades and a very smooth surface. We used one hundred lbs. of powder on the entire length of this Motorway.

OTHER CAMPGROUND FACILITIES

Fireplaces.

Under this heading we built 13 fireplaces of a special design, requiring selected stone all cut to measurements. This kind of work usually requires the work of skilled mechanics, but was all done with CCC labor.

LATRINES.

We are building four of these, all built in sections, so they can be moved with little difficulty at any time. They have been completed and are stored in the Mess Hall at Annie Spring Camp.

OTHER STRUCTURES

Lumber Sheds.

We built three of these sheds, size 24 x 42. All are set on concrete foundations. Here again our enrollees did all of the carpenter work, and the workmanship stands up well beside that of skilled workmen.

National Creek Snowshoe Cabin.

The National Creek Cabin was started last year, logs cut, etc. This was not a great deal of help, because the logs were so thoroughly seasoned that they were hard to work. This cabin, together with a fine water system with a 20 ft. fall, 450 ft. of pipe line, a fine latrine, corral for horses, etc., was completed early in September.

Bybee Creek Snowshoe Cabin.

Here we completed a last year's job, put in a fine water system, chinked the cabin inside and out, and other odds and ends needed to complete the job.

Red Blanket Snowshoe Cabin.

This cabin was in about the same condition as Bybee Creek Cabin. We put in a water system and chinked it inside and out.

Maklak Snowshoe Cabin.

This cabin is located over near the East Entrance to the Park, in the Sun Creek drainage basin. This cabin was completed Friday, October 5th, including a water system. This cabin was completed in fourteen days with an average of nine men a day.

TOOL BOXES

We built fourteen of these boxes, for Annie Spring, Wineglass, and Oregon Cave Camps.

PUBLIC CAMPGROUND WASTE DISPOSAL PITS

We built two of these, one at Whitehorse Campground, and one at Cold Springs Campground.

BANK SLOPING & EROSION CONTROL

Since reporting in July we have sloped the banks, put in drainage where necessary, obliterated all of the old road on the South Entrance Highway. We have sloped about 3.5 miles on the West Entrance road. We have kept a man all season on the road from Government Camp to the Rim, to keep all loose and rolling rock swept from the road. We have kept one to two men on the trail from the Rim to the Lake all season, and have kept this free from rock and debris at all times.

RESTOCKING CRATER LAKE WITH FISH

We hauled and planted 54,000 fish in Crater Lake, going to the Butte Falls Hatchery for them, hauling and planting them with a minimum of loss.

LANDSCAPING

This work was done under the supervision of Mr. Buford, and the leadership supervision of enrollee Brownfield. We have maintained an average crew of 25 men and three trucks a day on this work. I consider the work done by our men outstanding. Much more has been accomplished than had been planned.

SURVEYING

The Engineer on this work, while charged to our Camp, has done all of the engineering work for all projects in the Park. We have furnished two men on surveying all season.

TELEPHONE LINES

For the past three months we have furnished an average of three men on this work.

FOREST FIRE CONTROL & SUPPRESSION

We were called to five fires, only one of which was in the Park. Two were in the Klamath Indian Reservation, one was at Prospect, where we received honorable mention, and one at Butte Falls, which took all of our equipment and men for over a week. Approximately one month's time was used in fire suppression.

SUMMARY

Two maps accompany this report showing the work accomplished by our boys during this period. One of these maps shows the work on construction projects, the other the work on non construction projects.

The success in accomplishing so much work during this season and doing it so well has been done with and by a very efficient and loyal group of foremen. They have at all times given the very best that they had. Together with this loyalty they have gotten the most out of the men, and that is the key to success in handling CCC labor.

I must mention Mr. J.L.Cook, Supervisor of Automotive Equipment, and Claude Murray, one of our boys, as helper. Through their cooperative efforts, and efficient truck drivers, we have had a minimum of trucks laid up; that is to say, our trucks have been on the job.

To Captain John Murray should go a lot of credit for a successful season's work.

Respectfully submitted,

L. G. Bowns, Project Supt.

UNITED STATES
DEPARTMENT OF THE INTERIOR
NATIONAL PARK SERVICE
CRATER LAKE NATIONAL PARK
CRATER LAKE, OREGON

OFFICE OF THE SUPERINTENDENT

October 20, 1934

Mr. Geo. F. Whitworth
Park Engineer for ECW
Crater Lake National Park
Medford, Oregon

Dear Mr. Whitworth:

In accordance with your request of Sept. 18, 1934, we are submitting a narrative report of the activities of this camp for the period July 1, 1934, to termination of the third enrollment period.

An analysis of the work during the past three months shows that we have expended a total of 6650 man days.

The health of the company has been excellent; we have had no serious accidents. The work we feel has moved along smoothly. We have had full cooperation from the Army, which has worked hand and glove with us at all times, and thanks to that cooperation we feel that we have accomplished much work of value to the Park.

With our Company of Junior boys we have rebuilt and maintained five miles of telephone line, maintained 2.3 miles of horse trail. Six miles of roadside has been cleaned. Our crews transplanted 7900 trees, built 95 miles of motor ways, prepared 1964 sq. yards of top soil. We spent 672 man days fighting fires and kept 74 man days in camp for fire pre-sepression. We cut and delivered over 150 cords of wood.

Two maps have been prepared to go with this report, one showing the construction projects on which our men worked, the other the non-construction projects.

We are proud of the compliment given the Company during the visit of Mr. Feckner and party Aug. 10th, and we are also very much pleased upon learning of the comments of Forester Shirley Allen on work done.

We enjoyed a visit from Walter M. Pierce, member of Congress, who talked to the boys, impressing in their minds, the value of the CCC movement to each of them, and the fact that they should endeavor to fulfill the wish of our President by making better and more loyal citizens of themselves.

We are also proud of the fact that 95% of our boys whose time expired and who have left us, have shown marked improvement physically, morally and spiritually.

It has been a pleasure to work under the supervision of our Park Engineer and Park Superintendent. We sincerely hope we have given the satisfaction that we have had in performing the work.

Respectfully submitted,
H. Ticknor
Project Superintendent



Original Bridge over
Sucker Creek
June 1st, 1934



Same bridge after it
was rebuilt
August 29th, 1934



Approach road built by
CCC enrollees at Camp
Oregon Caves
August 29th, 1934

APPROACH TO DETACHED CAMP AT OREGON CAVES

OREGON CAVES

PARK	ECW	PROJECT DESCRIPTION	LOCATION OF PROJECT	WORK START	WORK COMP	PER CENT	MAN DAYS	PLAN	DONE	UNIT	LABOR COSTS	OTHER COSTS	TOTAL COSTS	EST. COSTS	NOTES
(a)	7										(b)	(c)			
1	31b	Water systems, pipe lines	From Lake Creek to storage tank above Chateau	7/11	-	1	70	8000	-	Ft.	240.80	49.58	290.38	4900	(d)
2	31a	Water systems, storage facilities	Above Chateau	-	-	-	-	38	-	M Gal	-	-	-	1550	(e)
3	28	Other structures, spike camp buildings	Junction of Sucker and Grayback Creeks	5/18	8/1	100	475	20	20	No.	1832.70	1628.47	3461.17	1500	(f)
4	3	Removal of fire hazards	Vicinity of Chateau	6/21	-	27	1175	40	11	Acre	921.08	665.50	1586.58	1650	(g)
5	2	Firebreak	West boundary	-	-	-	-	1	-	Mile	-	-	-	300	(h)
6	16	Dwelling for Ranger	Near Chateau	-	-	-	-	1	-	No.	58.50	45.86	104.36	1500	(q)
7	-	Septic tank overflow	Present septic tank	8/13	9/17	100	89	700	700	Ft.	147.13	193.89	341.02	300	(j)
8	13b	Minor roads for garbage disposal	End of present utility road	8/15	9/27	100	202	.1	.2	Mile	119.00	39.40	158.40	200	(k)
9	28	Other structures incinerator for cans	On utility road	-	-	-	-	1	-	No.	-	-	-	75	(i)
10	18	Tool house, equipment shed	On utility road	-	-	-	-	1	-	No.	-	-	-	250	(l)

- (a) Priority based upon the revised program for the Oregon Caves National Monument submitted to the Director July 20th, 1934 and approved August 9th, 1934.
- (b) Including costs of facilitating and supervisory personnel.
- (c) Includes all other costs chargeable to the job not included in labor charges of supervisory and facilitating personnel.
- (d) The right of way was surveyed for this pipeline during this period, permits were obtained from the State of Oregon to divert the water, and construction will be started during the Fourth Enrollment Period. It has been decided to run the water in pipe the full distance, rather than in open ditch for a portion of the way.
- (e) Plans for this work have been approved by the Director and work will be started during the Fourth Enrollment Period. The capacity of the reservoir was reduced from 45000 gallons to 38000 gallons.
- (f) Work was completed on this project and men turned over to the other projects as soon as possible.
- (g) Approximately 11 acres of the required 40 were cleaned up. Here again the tendency has been to do too thorough a job. Hence in cleaning up the balance of the area during the Fourth Enrollment Period very little additional cleanup will be attempted, the major portion of the work being the cutting into fire wood of the snags felled during the Third Enrollment Period.
- (h) No work was done on this project during the Third Enrollment Period.
- (i) Plans were received too late to start this work during the Third Enrollment Period. Hence no work was done on this project.
- (j) On the original program this was erroneously classified under ECW Classification Number 28. As the work consisted primarily in laying approximately 700 feet of sewer pipe it should be classified under ECW 7 miscellaneous classification, and is so considered in the tables of this report. This work was completed.
- (k) Work was completed on this project.
- (l) Due to the small amount of funds set up in the Third Enrollment Program period for this project it was decided to eliminate the garage portion of the shed. Plans were accordingly drawn up on this basis and approved by the Director. However when it became certain that a Fourth Enrollment Period camp would be located at Oregon Caves, the project was revised and sufficient money added to permit the construction of a garage in conjunction with the equipment shed. Hence no work was done on this project during the Third Enrollment Period.

OREGON CAVES

PARK	ECW	PROJECT DESCRIPTION	LOCATION OF PROJECT	WORK START	WORK COMP.	PER CENT	MAN DAYS	PLAN DONE	UNIT	LABOR COSTS	OTHER COSTS	TOTAL COSTS	EST. COSTS	NOTES
11	14b	Trails	Exit trail, Cliff trail Big Tree trail, Lake Bolon trail, Lake Moun- tain trail, Chateau to Diesel plant	9/10	-	2	51	175	.4 Mile	85.95	30.94	116.89	450	(m)
12	48a	Water improvement pond- building small dam and stream improvement.	Below Chateau	-	-	-	-	1	- Acre	-	-	-	175	(h)
13	47a	Bridges, foot	Canyon below Chateau	-	-	-	-	4	- No.	-	-	-	200	(h)
14	8	Fighting forest fires	Where needed	-	-	-	25	-	25 MD	-	-	-	-	-
15	13b	Roads, minor	Entrance to CCC Camp	7/9	7/30	100	40	.1	.1 Mile	42.00	-	42.00	-	(n)
16	47c	Bridges, vehicle	Across Sucker Creek	8/13	8/17	100	48	1	1 No.	20.03	-	20.03	-	(p)

(h) No work was done on this project during the Third Enrollment Period.

(m) Portions of the Exit Trail from the Caves have been rebuilt according to Park Standards. Due to the heavy traffic over this trail completion was not possible until after the close of the main tourist season. Preliminary surveys have been made over the proposed route of the Cliff Trail.

(n) The road used to the bridge at the entrance of the CCC Camp was of very light construction and was badly cut up by the passage of out trucks. It was therefore necessary to build this road to permit its continued use. Minor improvement project approved by the Park Superintendent, funds for which were diverted from other projects.

Two projects on the original approved program of May 1st, 1934 were later abandoned on the revised program approved August 9th, 1934, as it was not felt that the work was as important for Third Enrollment Period projects as were other more essential projects. These two projects were the construction of a minor road from the highway to the Diesel plant and boundary surveys around the Monument.

EMERGENCY CONSERVATION WORK



SECTION E

TABLES



TABLE I

STATEMENT OF ECW EXPENDITURES BY U.S. WAR DEPARTMENT
FOR PERIOD APRIL 5, 1933 TO MARCH 31, 1934.

Allowance to members	\$86,739,862.90	
Pay of civilian employees	8,506,369.82	
Shelter	23,277,746.60	This equals cost of quarters, subsistence, medical care, transportation, recreation, clothing, etc.
Clothing	26,850,296.14	
Subsistence	31,369,029.96	
Medical supplies and treatment	4,093,412.60	
Supplies, materials and equipment	14,261,209.18	
Travel of persons	10,696,334.32	
Transportation of things	4,393,501.91	
Utilities	2,490,699.83	
Miscellaneous.	9,105,021.76	
Items awaiting classification	7,122.04	
Grand total	<u>\$221,790,607.06</u>	

.....

Total enrolled strength of the Civilian Conservation Corps, at the end of each month of the period beginning April, 1933, to March 31, 1934.

April	37,189
May	154,238
June	279,722
July	293,562
August	275,990
September	208,700
October	240,241
November	287,733
December	278,517
January	289,184
February	278,766
March	<u>211,747</u>
	2,835,617

Equals number of man months employed on ECW works for first year of its operation.

.....

Therefor, 221,790,607.06 / 2,825,617 equals 78, or \$78.00 per month actual cost to U. S. Government for subsistence, quarters, clothing, medical care, transportation, recreation, etc.per CCC enrollee.

.....

Average working days per month equals 22.
78/22 equals \$3.53 actual cost to the Government for subsistence quarters, clothing, medical care, transportation, recreation, etc. per working day.

- * Figures from Table in appendix P, second report of the Director of ECW.
- ** Figures from Table on page 24 and 25, second report of the Director, ECW.

TABLE II

Amount of monthly wage CCC enrollee would receive to equal actual cash value of wages, quarters, subsistence, clothing, etc., if he were employed on the regular Park pay roll at Crater Lake National Park.

Amount saved or sent home: equal to net wages per enrollee.	\$30.00
Board: equals thirty days at \$1.05	31.50
Quarters: equals thirty days at .10	3.00
Medical care: equals amount paid Camp Doctor.	1.00
Clothing allowance: equals amount actually paid by War Department for first year of CCC divided by number of man months. *	6.67
Recreation: two round trips to town per month: equals 250 miles at three cents.	7.50
Round trip from home town to CCC camp and back again averages \$22.50 per six month's enrollment period: equals a monthly value of	3.75

	\$ 83.42
Average monthly wage (month of September) for laborers and senior laborers on PWA pay roll at Crater Lake Park.	\$ 70.07
Increase in equivalent pay received by CCC enrollee over that paid laborers and senior laborers per mo.	\$ 13.35

* Does not include amount obligated but not liquidated.

TABLE III
SUMMARY OF PROJECTS
CAMP ANNIE SPRING
NP I

Priority Number	ECW 7 Number	Description	Location	Work Estimated		Estimated Man Days	Estimated Equip.	Estimated Costs		
				Amount	Units			M & S	Labor	Total
1	53	Landscaping (a)		4	acres	4000	\$400	\$600	\$2000	\$3000
1a	53b	Landscaping, fine grading on road slopes and around parking areas	Rim area and Government Camp	175	cu yds					
1b	53c	Landscaping, soil preparation	Ditto	11500	sq yds					
1c	53d	Landscaping, seeding and/or sodding	Ditto (a-1)	1	acre					
1d	53e	Landscaping, moving and planting trees	Ditto (a-1)	9600	number					
2	39a	Insect pest control, tree	Western half of park	16000	acres	1500	\$650	\$250	\$1500	\$2400
2a	39a	Insect pest control, tree (b)	Eastern half of park	15000	acres	1000	\$ 25	\$ 75	\$ 400	\$ 500
3	4	Roadside clearing or clean-up, fire prevention	West and south (e) entrance road	19	miles	3500	\$600	\$400	\$2000	\$3000
4	13a	Roads, truck trails	Union Peak Loop and Castle Creek Watchman Loop	8	miles	600	\$300	\$900	\$1300	\$2500
5	1	Telephone lines	Government Camp to south boundary and to Lost Creek	18	miles	750	\$125	\$625	\$ 750	\$1500
5a	1	Telephone lines (maintenance on same)	Ditto	18	miles (d)	none				
6	28	Other structures, lumber storage sheds	Government Camp	3 (e)	number	500	\$100	\$1300	\$1100	\$2500
7	28	Other structures, Snowshoe Cabins	National Creek Bear Creek (f)	3	number	500	\$100	\$500	\$600	\$1200
8	46a	Erosion control, bank protection	Maklak Spring (g)	121000	sq yds	3000	\$500	\$250	\$1750	\$2500
9	14b	Trails, foot	West and south entrance highways Annie Creek, Castle Creek and Sun Creek Crossings (a-1)	3 (h)	miles	150	\$ --	\$ 50	\$ 200	\$ 250
10	29	Fences other than range, corral	Government Camp							
11	--	Water systems, temporary stations (a)	See below	5	number	90	\$ 70	\$400	\$ 130	\$ 600
11a	31b	Water systems, pipe lines	National Creek	471	feet					
			Bybee Creek	200	feet					
			Bear Creek (f)	560	feet					
11b	31c	Water systems, wells	Red Blanket Creek	1	number					
			Maklak Spring (f-g)	1	number					
12	22	Public Camp Ground Clearing	Rim area, Annie Spring and Lost Creek	25	acres	400	\$ --	\$125	\$ 125	\$ 250
13	24	Public Camp Ground Latrines	Whitehorse, Cold Spring, Sun Creek (I)	4	number	65	\$ --	\$100	\$ 100	\$ 200
14	25b	Public Camp Ground Water Systems	Whitehorse, Cold Springs and Sun Creek (J)	2	number	100	\$ --	\$ 50	\$ 50	\$ 100
15	26b	Public Camp ground waste disposal pits	Whitehorse and Cold Spring	2	number	30	\$ --	\$ --	\$ 25	\$ 25
16	27	Other camp ground facilities	Rim and Annie Spring	20	number	160	\$ 50	\$150	\$200	\$400

Entire project transferred to Camp Wineglass
see Table IV

TABLE III
SUMMARY OF PROJECTS
CAMP ANNIE SPRING
NP I

Priority Number	ECW 7 Number	Description	Location	Work Estimated		Estimated Man Days	Estimated Costs			
				Amount	Units		Equip.	M & S	Labor	Total
17	44a	Surveying, linear	Thruout Park on all projects	100	miles	300	\$ 50	\$ 50	\$ 350	\$ 450
18	44a	Surveying, linear, boundary survey and marking	Annie Creek addition	6	miles	100	\$ --	\$ --	\$ 150	\$ 150
19	51	Corrals	National Creek, Bybee Creek, Red Blanket Creek, Bear Creek (f) Maklak Spring (g)	5	number	90	\$ --	\$ 30	\$ 100	\$ 130
20	--	Rodent Control	Rim area and Government camp	3	acres	60	\$ --	\$ --	\$ 25	\$ 25
21	47c	Bridges, vehicle	Castle Creek motorway	2	number	60	\$ --	\$ 50	\$ 75	\$ 125
22	48c	Fish restocking	Crater Lake	300,000	number	80	\$100	\$ 75	\$ 75	\$ 250
23	11	General clean-up, other than fire prevention	Area around Government camp	5	acres		(k)			
24	16	Tool boxes	For ECW use in Park	14	number		(k)			
25	8	Fighting forest fires	Where needed		(1)					
26	9	Fire suppression	Holding men in camp		(1)					

(a) Original estimate not broken down as to units, but beginning with the August report amounts were broken down in accordance with the revised ECW 7 form.
(a-1) A certain amount of maintenance was necessary on these projects, which were not estimated on original program. Minor project approved by Park Superintendent.
(b) Originally planned to be handled from Camp Wineglass, but field developments indicated that better results could be obtained by handling the entire insect pest control from Camp Annie Spring. Change approved by Park Superintendent.
(c) Added six miles to make total of 19 miles by clearing road from Rim to Government Camp and from Government Camp to Annie Spring. See approved drawing CL 5026
(d) Original estimate called for 18 miles of new construction but it was found that practically the same results could be obtained from maintenance of present lines. Minor change approved by Park Superintendent.
(e) Originally planned to build five of these sheds, but due to size of those built number reduced to 3. Minor change approved by Park Superintendent.
(f) Built by crews from Camp Wineglass, from whence it could be handled more expeditiously.

(g) Originally planned for Sun Creek, but after further survey Maklak Spring was found to be a better site. Minor project change approved by Park Superintendent.
(h) Original estimate was for 14 miles, but after work was started units were changed to those of revised ECW 7 form, and due to several large cuts amounts were increased from those originally contemplated. Minor project change approved by Park Superintendent.
(i) Due to the abandonment of Sun Creek site as a Public campground number of latrines reduced from 8 to 4.
(j) Due to the abandonment of Sun Creek site as a Public campground number of systems reduced to two.
(k) Minor improvement project approved by Park Superintendent. Costs for this to be diverted from other funds.
(l) Work can not be estimated in advance.

TABLE IV
SUMMARY OF PROJECTS
CAMP WINEGLASS
NP 2

Priority Number	ECW 7 Number	Description	Location	Work Estimated		Estimated Man Days	Estimated Costs			
				Amount	Units		Equip.	M & S	Labor	Total
1	4	Roadside cleanup	East entrance to Kerr Notch and new road to North boundary	10	miles	3000	\$ 250	\$ 250	\$1500	\$2000
2	39a	Insect pest control, tree	Easterly half of Park	Entire project transferred to Camp Annie Spring crews. See Table III.						
3	13a	Roads, truck trails	Bear Creek and Timber Crater Loop	10 (a)	miles	450	\$ 100	\$ 150	\$ 350	\$ 600
4	3	Removal of fire hazards	Rim road near Wineglass	2	acres	350	\$ 50	\$ 25	\$ 175	\$ 250
5	1	Telephone lines	Lost Creek to Mt. Scott	6	miles	100	\$ ---	\$ 50	\$ 100	\$ 150
5a	1	Telephone lines (maintenance on same)	Lost Creek to Mt. Scott			(b)				
6	14a	Trails, horse	Rim road to Sun Notch to Garfield Peak	2 (c)	miles	1600	\$ 200	\$ 400	\$ 600	\$1200
7	22	Public Camp Ground Clearing	Lost Creek	5	acres	200	\$ ---	\$ 50	\$ 150	\$ 200
8	51	Corrals, horse	Lost Creek	1	number	30	\$ ---	\$ 10	\$ 40	\$ 50
9	27	Other campground facilities	Lost Creek	10	number	100	\$ 50	\$ 100	\$ 150	\$ 300
10	47c	Bridges, vehicle	Bear Creek	1	number	30	\$ ---	\$ 50	\$ 50	\$ 100
11	29	Fences other than range, corral (d)	Government Camp	.1	mile	25	\$ ---	\$ 200	\$ 100	\$ 300
12	28	Other structures, snowshoe cabin (e)	Bear Creek				See Table III.			
13	31b	Water system, pipelines (e)	Bear Creek				See Table III.			
14	51	Corrals (e)	Bear Creek				See Table III.			
15	11	General clean-up other than fire prevention	Near Government Camp	5	acres	(f)				
16	31b	Water systems, pipe lines	Above Government Camp	100	feet	(f)				
16a	31c	Water systems, wells and water holes	Above Government Camp	7	number	(f)				
17a	53b	Landscaping, fine grading on road slopes and around parking areas (e)	Rim area and Government Camp				See Table III.			
17b	53c	Landscaping, soil preparation	Rim Area and Government Camp				See Table III.			
17c	53d	Landscaping, seeding and/or sodding	Rim area and Government Camp				See Table III.			
17d	53e	Landscaping, moving and planting trees	Rim area and Government Camp				See Table III.			
18	13c	Roads, highway, maintenance, setting snow poles,	All main roads in park.	40	miles	(f)				
19	8	Fighting forest fires	Where needed			(g)				
20	9	Fire pre-suppression	Holding men in camp			(g)				
21	13c	Roads, highway, maintenance	Around rim	8	miles	(f)				
22	31a	Water systems, storage facilities, moving tank	Mt. Scott	1	M gal.	(f)				

(a) Due to re-routing length increased from eight to ten miles, minor change approved by Park Superintendent.
 (b) Original estimate called for new construction, but it was found that practically same results could be obtained by maintenance of present line. Minor project change approved by Park Superintendent.
 (c) Due to suggestions from the Landscape Department trail was only run from road to Vidae Falls, reducing total length by two miles. Minor change approved by Park Superintendent.

(d) Project transferred from Camp Annie Spring to Wineglass.
 (e) Work on this project done by Camp Wineglass, but it was originally a part of Camp Annie Spring project and in order to simplify records all charges are transferred to that Camp.
 (f) Minor improvement projects approved by Park Superintendent.
 (g) Work can not be estimated in advance.

TABLE V
SUMMARY OF PROJECTS
CAMP OREGON CAVES
NP 2a

Priority Number (a)	ECW 7 Number	Description	Location	Work Estimated							Estimated Costs		
				Amount	Units	Man Days	Equip.	M & S	Labor	Total			
1	31b	Water systems, pipe lines	From Lake Creek to storage tank above Cave entrance	8000	feet	(b)	(c)	\$4600	\$ 300	\$4900			
2	31a	Water systems, storage facilities	Above Cave entrance on opposite side of canyon	45000	gallons	(b)	(c)	\$1250	\$ 300	\$1550			
3	28	Other structures, spike camp buildings	At junction of Sucker and Grayback Creeks	20	number	(b)	(c)	\$1200	\$ 300	\$1500			
4	3	Removal of fire hazards	Vicinity of Chateau	40	acres	3000	\$ 500	\$ 350	\$ 800	\$1650			
5	2	Firebreak	Below Chateau	1	mile	300	\$ 50	\$ 50	\$ 200	\$ 300			
6	16	Dwelling at permanent stations for Ranger	Near Chateau	1	number	(b)	(c)	\$1200	\$ 300	\$1500			
7		Other structures, improving septic tank	Below Chateau	700 (d)	feet	(b)	(c)	\$ 225	\$ 75	\$ 300			
8	13b	Roads, minor, for garbage disposal	End of present utility road	.125	miles	(b)	(c)	\$ 150	\$ 50	\$ 200			
9	28	Other structures, incinerator for cans	On utility road	1	number	(b)	(c)	\$ 50	\$ 25	\$ 75			
10	18	Tool houses and boxes	On utility road	1	number	100	\$ --	\$ 100	\$ 150	\$ 250			
11	14b	Trails, foot	See below	17.5	miles	(b)	(c)	\$ 300	\$ 150	\$ 450			
		Improving exit trail	0.5 miles				Included in above						
		Improving Cliff trail	0.5 miles				" " "						
		Trail to Big Tree	1.5 miles				" " "						
		Trail to Lake Bolon	3.5 miles				" " "						
		Trail to Lake Mt.	4.5 miles				" " "						
		Chateau to Diesel plant	2.0 miles				" " "						
12	48a	Water improvements, pond, building small pond and dam, some stream improvement	Below Chateau	.25	acres	(b)	(c)	\$ 75	\$ 100	\$ 175			
13	47a	Bridges, foot	In canyon below Chateau	4	number	100	\$ --	\$ 100	\$ 100	\$ 200			
14	8	Fighting forest fires	Where needed			(g)							
15	13b	Roads, minor (i)	Entrance to CCC Camp	0.1	miles	(e)							
16	47c	Bridges, vehicle (h) (i)	Sucker Creek	1	number	(e)							
17	13b	Roads, minor	From highway to Diesel plant	0.5	miles	(f)							
18	44a	Surveys, linear, boundary survey	Around Monument	5.0	miles	(f)							

(a) Priority based upon the revised program for the Oregon Caves National Monument submitted to the Director July 20, 1934.
 (b) Man days not estimated for these projects.
 (c) Equipment costs on these projects not segregated from M & S costs.
 (d) Program shows this as number ECW 7 classification 28. Should be listed as 700 feet of sewer pipe, ECW 7 miscellaneous classification.

(e) Minor improvement project approved by Park Superintendent. Funds to be diverted from other projects.
 (f) On original program approved by Director May 1st, 1934, but excluded from program submitted to the Director on July 20, 1934.
 (g) Work can not be estimated.
 (h) Rebuilding bridge across Sucker Creek at CCC camp.
 (i) Maintenance projects.

TABLE VI
SUMMARY OF PROJECTS
CAMP MODOC LAVA BEDS
NP 1A

Priority Number	ECW 7 Number	Description	Location	Work Estimated							
				Amount	Units	Man	Days	Estimated Costs Equip.	M & S	Labor	Total
1	28	Other structures, spike camp buildings	Lava Beds	1	number	20		\$ 50	\$ 25	\$ 50	\$ 125
2	--	Geology studies	Lava Beds	200	Caves	120		\$ 25	\$ 25	\$900	\$ 950
3	44a	Surveys, linear	Lava Beds	150	miles	940		\$100	\$200	\$900	\$1200

TABLE VII
PROJECT MAN DAYS BY MONTHS

NP 1
CAMP ANNIE SPRINGS

PROJECT NUMBER	ECW 7 NUMBER		APRIL	MAY	JUNE	JULY	AUG.	SEPT.	OCT.	TOTAL
1a	53b	Landscaping, fine grading on road slopes and around parking areas.	-	-	-	-	8	10	70	94
		Landscaping, fine grading on road slopes and around parking areas.(a)	-	24	167	0	0	8	0	199
1b	53c	Landscaping, soil preparation	-	-	30	220	314	347	19	930
		Landscaping, soil preparation(a)	-	763	596	325	66	21	0	1743
1c	53d	Landscaping, seeding and/or sodding	-	-	-	15	152	1	99	267
		Landscaping, seeding and/or sodding	-	-	-	-	-	-	-	0
		Landscaping, seeding and/or sodding, maintenance of same	-	-	-	-	18	8	0	26
		Landscaping, seeding and/or sodding, maintenance of same(a)	-	-	-	-	144	60	0	204
1d	53e	Landscaping, moving and planting trees	-	66	38	45	52	2	13	214
		Landscaping, moving and planting trees(a)	-	103	230	334	514	297	0	1528
2	39a	Insect pest control, entire park(b)	15	454	341	0	0	0	0	810
3	4	Roadside Cleanup	-	282	910	1354	466	652	234	3898
4	13a	Truck Trails	-	-	-	203	409	222	234	1068
5	1	Telephone lines (c)	-	10	131	2	41	32	1	217
6	28	Other structures, lumber storage sheds	-	-	-	2	211	220	55	488
7	28	Other structures, snow shoe cabins, Maklak Spring & National Cr. Bear Creek cabin (a)	-	-	-	6	22	149	108	285
8	46c	Erosion control, bank protection	-	-	514	191	571	287	267	1830
		Erosion control, bank protection(a)	-	104	292	0	0	0	0	396
9	14b	Trails, foot (c)	-	-	201	31	78	14	0	324
10	29	Fences (other than range) corral at headquarters (d)	-	-	-	-	-	-	-	000
11a	31b	Water systems, pipe lines-Bybee Creek National Creek-----Bear Creek	-	-	-	-	10	14	0	24
			-	-	-	-	-	-	31	31
11b	31c	Water systems, wells-Red Blanket Creek Maklak Spring	-	-	-	-	-	-	10	10
			-	-	-	-	-	2	0	2
12	22	Public camp ground clearing	-	61	92	75	98	0	58	384
13	24	Public camp ground latrines	-	-	-	-	-	25	35	60
14	25b	Public camp ground water systems	-	-	-	-	-	-	-	0
15	26b	Public camp ground waste disposal pits	-	-	-	5	0	4	0	9
16	27	Other camp ground facilities	-	-	30	45	114	15	0	204
17	44a	Surveying, linear, thruout Park	-	25	42	39	52	43	22	223
18	44a	Surveying, linear, boundary survey and marking.	-	-	-	-	-	-	-	-
19	51	Corrals	-	-	-	-	-	72	12	84
20	-	Rodent control	-	-	-	-	-	-	-	0
21	47c	Bridges, vehicle	-	-	-	-	-	-	-	0
22	48c	Fish restocking	-	-	-	79	0	0	0	79
23	11	General cleanup other than fire protection	-	-	-	-	-	-	136	136
24	18	Tool boxes	-	-	-	-	41	0	0	41
25	8	Fire fighting	-	-	-	231	493	416	0	1140
26	9	Fire pre-suppression	-	-	-	-	35	0	0	35

(a) Certain of this work handled from Camp Wineglass.
(b) All insect control handled from Camp Annie Spring.

(c) Only maintenance work done on this project, minor change approved by Park Superintendent.
(d) This project transferred to Camp Wineglass in entirety.

TABLE VIII
PROJECT MAN DAYS BY MONTHS

NP 2
CAMP WINEGLASS

PRIORITY ECW 7			Apr.	May	June	July	Aug.	Sept.	Oct.	Total
NUMBER	Number	Description								
1	4	Roadside cleanup	-	280	399	881	933	336	60	2889
2	39a	Insect pest control, tree (b)	Man day distribution for this shown in Table VII							
3	13a	Roads, truck trails	-	-	-	-	390	613	49	1052
4	3	Removal of fire hazards	-	296	207	0	0	0	0	503
5	1	Telephone lines (a)	12	8	40	102	102	58	0	322
6	14a	Trails, horse Vidae Falls	-	-	-	-	46	354	316	716
6a	14a	Trails, maintenance (e)	-	423	12	28	0	0	0	463
7	22	Public camp ground clearing, Lost Creek	-	183	0	0	0	0	0	183
8	51	Corrals, horse-Lost Creek	-	-	-	-	-	-	-	-
9	27	Other camp ground facilities	-	-	-	-	-	-	-	-
10	47c	Bridges, vehicle, Bear Creek	-	-	-	-	-	-	-	-
11	29	Fences other than range, corral at Government Camp (c)	-	-	-	-	34	0	0	34
12	28	Other structures, snowshoe cabin-Bear Creek (d)	Man day distribution for this shown in Table VII							
13	31b	Water systems, pipe lines, Bear Creek (d)	Man day distribution for this shown in Table VII							
14	51	Corrals, Bear Creek (d)	Man day distribution for this shown in Table VII							
15	11	General cleanup other than fire prevention Gov't Camp	191	118	0	0	0	0	176	485
16	31b	Water systems, pipe lines above Government Camp (a)	-	-	-	-	-	-	21	21
16a	31c	Water systems, wells and water holes above Gov't Camp (a)	-	-	-	-	-	-	19	19
17a	53b	Landscaping, fine grading on road slopes (d)	Man day distribution for this shown in Table VII							
17b	53c	Landscaping, soil preparation (d)	Man day distribution for this shown in Table VII							
17c	53d	Landscaping, seeding and/or sodding (d)	Man day distribution for this shown in Table VII							
17d	53e	Landscaping, moving and planting trees (d)	Man day distribution for this shown in Table VII							
18	13c	Roads, highway maintenance, setting snow poles	-	-	-	-	-	12	29	41
19	8	Fighting forest fires	-	-	-	-	476	196	0	672
20	9	Fire pre-suppression	-	-	-	36	38	0	0	74
21	13c	Roads, highway, maintenance (e)	436	0	0	0	0	0	0	436
22	31a	Water systems, storage facilities-Mt. Scott (a)	-	-	-	-	-	38	0	38

- (a) Only maintenance work done on this project, minor change approved by Project Superintendent.
 (b) Entire project transferred to Camp Annie Spring and done by their crews.
 (c) Work on this project originally assigned to Camp Annie Spring but transferred to Camp Wineglass where it could be handled more conveniently.

- (d) Work on this project done by Camp Wineglass, but it was originally a part of the Camp Annie Spring project and in order to simplify records all man days are recorded under Camp Annie Spring. See Table VII.
 (e) Maintenance required to open trails and roads in spring, minor project approved by Park Superintendent.

TABLE IX
PROJECT MAN DAYS BY MONTHS

NP 2a
CAMP OREGON CAVES

PRIORITY NUMBER	ROW 7 NUMBER	DESCRIPTION	APRIL	MAY	JUNE	JULY	AUG.	SEPT.	OCT.	TOTAL
1	31b	Water systems, pipe line from Lake Creek	-	-	-	34	0	36	0	70
2	31a	Water systems, storage facilities near entrance	-	-	-	-	-	-	-	-
3	28	Other structures, spike camp buildings	-	-	443	30	2	0	0	475
4	3	Removal of fire hazards	-	-	250	359	368	196	0	1173
5	2	Fire break	-	-	-	-	-	-	-	-
6	16	Dwelling at permanent stations, for ranger	-	-	-	-	-	-	-	-
7	28	Other structures, improving septic tank	-	-	-	-	60	29	0	89
8	13b	Roads, minor, for garbage disposal	-	-	-	-	66	136	0	202
9	28	Other structures, incinerator for cans	-	-	-	-	-	-	-	-
10	18	Tool house for Ranger	-	-	-	-	-	-	-	-
11a	14b	Improving exit trail	-	-	-	-	-	38	13	51
11b		Improving cliff trail	-	-	-	-	-	-	-	-
11c		Trail for Big Tree	-	-	-	-	-	-	-	-
11d		Trail to Lake Bolon	-	-	-	-	-	-	-	-
11e		Trail to Lake Mountain	-	-	-	-	-	-	-	-
11f		Trail, Chateau to diesel plant	-	-	-	-	-	-	-	-
12	48a	Water improvement, dam, small pond and stream	-	-	-	-	-	-	-	-
13	47a	Bridges, foot below Chateau	-	-	-	-	-	-	-	-
14	8	Fighting forest fires	-	-	-	-	25	0	0	25
15	13b	Roads, minor, entrance to camp (a)	-	-	-	40	0	0	0	40
16	47c	Bridges, vehicle, Sucker Creek (a)	-	-	-	-	48	0	0	48

(a) Maintenance projects.

TABLE XII
PROJECT UNITS COMPLETED BY MONTHS

NP2
CAMP WINEGLASS

PRIORITY NUMBER	ECW 7 NUMBER	UNITS	APRIL	MAY	JUNE	JULY	AUG.	SEPT.	OCT.	TOTAL	EST. TOTAL	
1	4	Roadside cleanup	miles	-	2	2	3	2.8	0.2	0	10	10
2	39a	Insect pest control, tree (b)		Distribution for this shown in Table XI								
3	17a	Roads, truck trails	miles	-	-	-	-	8.8	0.7	9.5	10	
4	3	Removal of fire hazards	acres	-	0	1(e)	0	0	0	1	2	
5	1	Telephone lines(a)	miles	2	4	1	2	2	1	0	12	(g)
6	14a	Trails, horse, Vidoe Wells	miles	-	-	-	-	0.1	0.9	1	2	2
6a		Trails, horse, maintenance(f)	miles	-	1	0.7	2.3	0	0	0	4	(g)
7	22	Public camp ground clearing, Lost Creek	acres	-	1	0	0	0	0	0	1	5
8	51	Corrals, horse, Lost Creek	number	-	-	-	-	-	-	-	-	2
9	27	Other camp ground facilities	number	-	-	-	-	-	-	-	-	10
10	47c	Bridges, vehicle, Bear Creek	number	-	-	-	-	-	-	-	-	1
11	29	Fences other than range, corral at Gov't. Camp (c)	miles	-	-	-	-	-	-	-	-	0.1
12	28	Other structures, Bear Creek cabin(d)		Distribution for this shown in Table XI								
13	31b	Water systems, pipe lines, Bear Creek(d)		Distribution for this shown in Table XI								
14	51	Corrals, Bear Creek (d)		Distribution for this shown in Table XI								
15	11	General cleanup other than fire prevention.	acres	3	1	0	0	0	2	0	6	-
16	31b	Water systems, pipe lines, Gov't. Camp (a).	feet	-	-	-	-	-	-	100	100	100
16a	31c	Water systems, wells above Gov't. Camp (a).	number	-	-	-	-	-	-	7	7	7
17a	53b	Landscaping, fine grading (d)		Distribution for this shown in Table XI								
17b	53c	Landscaping, soil preparation (d)		Distribution for this shown in Table XI								
17c	53d	Landscaping, seeding and for sodding (d)		Distribution for this shown in Table XI								
17d	53e	Landscaping, moving and planting trees(d)		Distribution for this shown in Table XI								
18	17c	Roads, highway, setting snow poles, maintenance.	miles	-	-	-	-	-	15	25	40	(g)
19	8	Fighting forest fires	man days	-	-	-	-	476	196	0	672	-
20	9	Fire pre-suppression	man days	-	-	-	36	38	0	0	74	-
21	17c	Roads, highway maintenance (e)	miles	8	0	0	0	0	0	0	8	(g)
22	31a	Water systems, storage facilities Mt. Scott (a)	M gal	-	-	-	-	-	1	0	1	(g)

- (a) Only maintenance work done on this project, minor change approved by Park Superintendent.
 (b) Entire project transferred to Camp Annie spring and work done by their crews.
 (c) Work on this project originally assigned to Annie Spring but transferred to Camp Wineglass where it could be handled more conveniently.

- (d) Work on this project done by Camp Wineglass, but it was originally a part of Camp Annie Spring project. In order to simplify records all man days are under Camp Annie Spring. See Table XI.
 (e) Shown to nearest whole number, as per Directors instructions actual amount 0.5 acre.
 (f) Maintenance required to open trails and roads in spring. Minor project approved by Park Superintendent.
 (g) Minor project not in original program approved by Park Superintendent.

TABLE XI
PROJECT UNITS COMPLETED BY MONTHS

Project Number	ECW 7 Number	Description	Units	Apr.	May	June	July	Aug.	Sept.	Oct.	Total	Est. Total
1a	53b	Landscaping, fine grading on road slopes and around parking area	cu yds	-	-	-	-	18	4	3	25	25
		Landscaping, fine grading on road slopes and around area (a)	cu yds	-	40	110	0	0	0	0	150	150
1b	53c	Landscaping, soil preparation	sq yds	-	-	105	1421	2035	2222	217	6000	6500
		Landscaping, soil preparation (a)	sq yds	-	1200	1000	1500	264	180	0	4144	5000
1c	53d	Landscaping, seeding and/or sodding	acres	-	-	-	-	-	1	0	1	1
		Landscaping, seeding and/or sodding (a)	acres	-	-	-	-	-	-	-	0	0
		Landscaping, seeding and/or sodding-maintenance	acres	-	-	-	-	-	2	0	2	(c)
		Landscaping, seeding and/or sodding-maintenance	acres	-	-	-	-	4	4	0	4	(c)
1d	53e	Landscaping, moving and planting trees	number	-	150	250	100	407	4	34	945	1600
		Landscaping, moving and planting trees (a)	number	-	300	400	650	5331	1919	0	8600	4600
2	39a	Insect pest control, entire park (b)	acres	100	5465	25435	0	0	0	0	31000	31000
3	4	Roadside cleanup	miles	-	1.3	4.1	3.6	7.5	2.1	0.1	18.7	19.0
4	13a	Truck Trails	miles	-	-	-	2.9	3.1	1.8	0.2	8.0	8.0
5	1	Telephone lines (c)	miles	-	2.0	8.5	0.0	5.0	2.5	0.0	18.0	(c)
6	28	Other structures, lumber storage sheds	number	-	-	-	-	1	1	1	3	3
7	28	Other structures, snowshoe cabins, Maklak Spring and National Creek	number	-	-	-	-	1	0	1	2	2
		Bear Creek cabin (a)	number	-	-	-	-	-	-	1	1	1
8	46c	Erosion control, bank protection	sq yds	-	-	3000	28800	55440	21384	3176	111800	116000
	46c	Erosion control, bank protection (a)	sq yds	-	1800	3200	0	0	0	0	5000	5000
9	14b	Trails, foot (c)	miles	-	-	2	3.5	3.5	2	0	11	(c)
10	29	Fences, other than range, Corral at Headquarters				(d)						
11a	31b	Water systems, pipe lines, Bybee Creek-Nat'l Creek	feet	-	-	-	-	471	200	0	671	
		Bear Creek (a)	feet	-	-	-	-	-	-	560	530	
11b	31c	Water systems, wells, Red Blanket Creek	number	-	-	-	-	-	-	1	1	1
		Maklak Spring (a)	number	-	-	-	-	-	1	0	1	1
12	22	Public Camp ground clearing	acre	-	6	6	5	1	0	2	20	25
13	24	Public camp ground latrines	number	-	-	-	-	-	1	3	4	4
14	25b	Public campground water systems	number	-	-	-	-	-	-	-	0	2
15	26b	Public camp ground waste disposal pits	number	-	-	-	1	0	1	0	2	2
16	27	Other camp ground facilities	number	-	-	1	5	7	0	0	13	20
17	44a	Surveying, linear, thruout park	miles	-	0.2	10.8	15	18	32	24	100	100
18	44a	Surveying, linear, boundary survey & marking	miles	-	-	-	-	-	-	-	0	6
19	51	Corrals	number	-	-	-	-	1	2	0	3	4
20	-	Rodent control	acres	-	-	-	-	-	-	-	0	3
21	47c	Bridges, vehicle	number	-	-	-	-	-	-	-	0	2
22	48c	Fish restocking	number	-	-	-	54000	0	0	0	54000	300000
23	11	General cleanup other than fire protection	acres	-	-	-	-	-	-	1	1	5
24	18	Tool boxes	number	-	-	-	-	14	0	0	14	14

(a) Certain of this work handled from Camp Wineglass.
(b) All insect control handled from Camp Annie Spring.

(c) Only maintenance work done on this project, minor change approved by Park Superintendent.
(d) This project transferred to Camp Wineglass in entirety.

TABLE X
RECAPITULATION OF MAN DAYS FURNISHED BY MONTHS

ALL CAMPS

	APRIL	MAY	JUNE	JULY	AUG.	SEPT.	OCT.	TOTAL
MAN DAYS BY CAMPS								
Total man days furnished by Camp Annie Spring, all projects	15	898	2329	2535	3263	2487	1356	12883
Total man days furnished by Camp Wineglass, all projects (a)	639	2302	1993	1712	2737	2144	809	12356
Total man days furnished by Camp Oregon Caves, all projects (c)	0	0	693	463	569	435	13	2173
Total man days furnished by all camps, all projects	654	3200	5015	4710	6569	5066	2178	27392
CONSTRUCTION PROJECTS (b)								
Total man days furnished by Camp Annie Spring, Annie Spring Projects	15	888	1997	2271	2598	2017	1355	11141
Total man days furnished by Camp Wineglass, Annie Spring Projects	0	994	1375	665	574	447	139	4184
Total man days furnished all camps, Annie Spring Projects	15	1882	3372	2936	3172	2494	1494	15325
Total man days furnished by Camp Annie Spring, Wineglass Projects	0	0	0	0	0	0	0	0
Total man days furnished by Camp Wineglass, Wineglass Projects	191	877	606	881	1403	1303	601	5862
Total man days furnished by all camps, Wineglass Projects	191	877	606	881	1403	1303	601	5862
Total man days furnished by Camp Oregon Caves, Oregon Caves Projects	0	0	693	423	496	435	13	2060
Total man days furnished all camps, all construction projects	206	2759	4031	4240	5071	4232	1518	23247
NON CONSTRUCTION PROJECTS								
Total man days furnished by Camp Annie Spring, Annie Spring maintenance	0	10	332	23	137	54	1	567
Total man days furnished by Camp Wineglass, Annie Spring maintenance	0	0	0	0	144	60	0	204
Total man days furnished by Camp Annie Spring, fire fighting	0	0	0	231	528	416	0	1175
Total man days furnished Annie Spring non-construction projects	0	10	332	264	309	530	1	1946
Total man days furnished by Camp Annie Spring, Wineglass maintenance	0	0	0	0	0	0	0	0
Total man days furnished by Camp Wineglass, Wineglass maintenance	448	431	52	130	102	108	69	1340
Total man days furnished by Camp Wineglass, fire fighting	0	0	0	36	514	196	0	746
Total man days furnished Wineglass non-construction projects	448	431	52	166	616	304	69	2086
Total man days furnished Oregon Caves, Oregon Caves maintenance	0	0	0	0	25	0	0	25
Total man days furnished by Camp Oregon Caves, Oregon Caves fire fighting.	0	0	0	40	48	0	0	48
Total man days furnished Oregon Caves non-construction projects	0	0	0	40	73	0	0	113
Total man days furnished all camps on non-construction projects	448	441	384	470	1498	834	70	4075
MAN DAYS BY CAMP PROJECTS								
Total man days, Annie Spring construction projects	15	1882	3372	2936	3172	2494	1494	15325
Total man days, Annie Spring non-construction projects	0	10	332	264	809	530	1	1946
Total man days all Annie Spring Projects	15	1892	3664	3200	3981	3024	1495	17271
Total man days, Wineglass construction projects	191	877	606	881	1403	1303	601	5862
Total man days, Wineglass non-construction projects	448	431	52	166	616	304	69	2086
Total man days, all Wineglass projects	639	1308	658	1407	2019	1607	670	7948
Total man days, Oregon Caves construction projects	0	0	693	423	496	435	13	2060
Total man days, Oregon Caves non-construction projects	0	0	0	40	73	0	0	113
Total man days, all Oregon Caves projects	0	0	693	463	569	435	13	2173
Total man days all projects	654	3200	5015	4710	6569	5066	2178	27392

(a) Excluding those furnished Oregon Caves.

(b) Fire suppression and pre-suppression has been classed as a non-construction account.

(c) Does not include camp overhead.

TABLE XIV
 COMPARISON OF WORK ESTIMATED AND WORK ACCOMPLISHED
 BY ECW 7 CLASSIFICATION NUMBERS
 WITH ENROLLEE MAN DAYS REQUIRED TO DO THE WORK

ALL ECW CAMPS UNDER JURISDICTION
 CRATER LAKE NATIONAL PARK

ECW 7														
CLASS.	Description	Units	Camp Annie Spring			Camp Wineglass			Camp Oregon Caves			Total all Camps		
			Est.	Acc.	MD	Est.	Acc.	MD	Est.	Acc.	MD	Est.	Acc.	MD
1.	Telephone lines	mi.	18	18(a)	217(a)	6	12(a)	322(a)	-	-	-	24	30(a)	539(a)
2	Fire break	mi.	-	-	-	-	-	1	0	0	1	0	0	
3	Removal of Fire Hazards	ac.	-	-	-	2	1	503	40	11	1178	42	12	1676
4	Roadside cleanup	mi.	19	18.7	3898	10	10	288	9	-	-	29	28.7	8787
8	Fighting Forest Fires	md.	-	-	1140	-	-	672	-	-	25	-	-	1837
11	General cleanup	ac.	5	1	136	5	6	485	-	-	-	10	7	621
9	Fire pre suppression	md.	-	-	35	-	-	74	-	-	-	-	-	109
13a	Truck Trails	mi.	8	8	1048	10	9/5	1052	-	-	-	18	17.5	2120
13b	Minor Roads	mi.	-	-	-	-	-	0-2	0.2	202	0.2	0.2	202	
13b	Minor Roads Maintenance	mi.	-	-	-	-	-	0.1	0.1	40	0.1	0.1	40	
13c	Highways	mi.	-	-	-	48(c)	48(c)	477	-	-	-	48(c)	48(c)	477
14a	Horse Trails	mi.	-	-	-	2	2	716	-	-	-	2	2	716
14a	Horse Trail Maintenance	mi.	-	-	-	4	4	463	-	-	-	4	4	463
14b	Foot Trails	mi.	5	0	0	-	-	-	17.5	0.4	5.	20.5	0.4	51
14b	Foot Trail Maintenance	mi.	11	11	324	-	-	-	-	-	-	11	11	324
16	Rangers Dwelling	no.	-	-	-	-	-	1	0	0	1	0	0	
18	Tool Boxes and Houses	no.	14	14	41	-	-	1	0	0	15	14	41	
22	Public Camp Clearing	ac.	25	20	384	5	1	183	-	-	-	30	21	567
24	Public Camp Latrines	no.	4	4	60	-	-	-	-	-	4	4	60	
25b	Public Camp Water	no.	2	0	0	-	-	-	-	-	2	0	0	
25b	Public Camp Waste Pits	no.	2	2	9	-	-	-	-	-	2	2	9	
27	Other Facilities	no.	20	13	204	10	0	0	-	-	-	30	13	204
28	Other Structures	no.	6	6	776	(d)	(d)	285	21	21	475	27	27	1251
29	Fences Other than Range	mi.	-	-	-	.1	0	34	-	-	-	.1	0	34
31a	Water Storage	mgal.	-	-	-	-	-	45	0	0	45	0	0	
31a	Water Storage Maintenance	mgal.	-	-	-	1	1	38	-	-	-	1	1	38
31b	Water Pipe	ft.	1231	1231	24	(d)	(d)	31	8000	0	70	9231	1231	55
31b	Water Pipe Maintenance	ft.	-	-	-	100	100	21	-	-	-	100	100	21
31c	Wells	no.	2	2	10	(d)	(d)	2	-	-	-	2	2	12
31c	Well Maintenance	no.	-	-	-	7	7	19	-	-	-	7	7	19
39a	Insect Pest Control	ac.	31000	31000	810	-	-	-	-	-	-	31000	31000	810
44a	Survey Linear	mi.	106	100	223	-	-	-	-	-	-	106	100	223
46c	Erosion Control	sq.yd.	121000	116800	1830	(d)	(d)	396	-	-	-	121000	116800	2226

(a) Maintenance work only. (b) Includes Minor Projects approved by Park Superintendent not on original program. (c) Includes Setting 40 miles of snow poles. (d) Work units listed under Camp Annie Spring. (e) Includes necessary maintenance.

TABLE XIV
 COMPARISON OF WORK ESTIMATED AND WORK ACCOMPLISHED
 BY ECW CLASSIFICATION NUMBERS
 WITH ENROLLEE MAN DAYS REQUIRED TO DO THE WORK

ALL ECW CAMPS UNDER JURISDICTION
 CRATER LAKE NATIONAL PARK

ECW 7														
CLASS.	Description	Units	Camp Annie Springs			Camp Wineglass			Camp Oregon Caves			Total all Camps		
			Est.	(b)Acc.	MD	Est.	(b)Acc.	MD	Est.	(b)Acc.	MD	Est.	Acc.	MD
47a	Foot Bridges	No.	-	-	-	-	-	-	4	0	0	4	0	0
47c	Vehicle bridges	No.	2	0	0	1	0	0	1	1	48	4	1	48
48a	Lake Improvement	Acr.	-	-	-	-	-	-	.25	.25	0	.25	0	0
48c	Restocking Fish	No.	300,000	54,000	79	-	-	-	-	-	-	300,000	54,000	79
51	Corrals	No.	5	3	84	1	0	0	-	-	-	6	3	84
53b	Landscaping-Grading	Cy.	175	175	94	(d)	(d)	199	-	-	-	175	175	293
53c	"-Soil Preparation	Sy.	11500	10144	930	(d)	(d)	1743	-	-	-	11500	10144	2673
53d	Landscaping Seeding	Acr.	1	1	293(e)	(d)	(d)	204	-	-	-	1	1	497
53e	Landscaping Planting	No.	9600	9545	214	(d)	(d)	1528	-	-	-	9600	9545	1742
	Rodent Control	Per.	3	0	0	-	-	-	-	-	-	3	0	0
	Laying Sewer Pipe	Ft.	-	-	-	-	-	-	700	700	89	700	700	89

TAB LE XV
ANALYSIS OF PROJECT COSTS

CAMP ANNIE SPRING NP-1

PRIOR- ITY	ECW 7 CLASS.	DESCRIPTION	NOTES	PAY ROLL	MAT- TRAVEL ERIAL			UTIL- ITIES	MISC.	ENG. (g)	COSTS OTHER		ESTI- MATED	BALANCE
					EXPEN- SES	SUP- PLIES	FREIGHT				THAN LABOR	TOTAL COSTS		
1a	53b	Landscaping, fine grading on road slopes around areas.	(a)	301.75	-	97.54	10.50	2.25	-	23.56	133.85	435.60)		
1b	53c	Land scaping, sdl preparation	(a)	1315.41	-	749.89	90.00	10.00	-	-	849.89	2165.30)	3000.00	2857.62 R.E.
1c	53d	Landscaping, seeding and sodding	(a)	857.52	-	586.76	77.00	6.50	-	15.89	686.15	1543.67)		
1d	53e	Landscaping, moving and planting trees	(a)	874.30	-	730.17	83.00	7.00	8.10	10.48	838.75	1713.05)		
2	39a	Insect pest control entire Park	(b)	1477.45	-	408.77	56.00	11.00	-	-	475.77	1953.22	2900.00	946.78
3	4	Roadside cleanup		2352.95	-	1185.79	139.75	18.50	527.57	32.15	1903.76	4256.71	3000.00	1256.71 R.E.
4	13a	Truck trails		1254.43	-	878.38	118.00	10.00	46.70	-	1053.08	2307.51	2500.00	192.49
5	1	Telephone lines	(c)	269.60	-	62.62	9.00	2.00	-	0.34	73.96	343.56	1500.00	1156.44
6	28	Other structures, lumber sheds		244.57	-	1332.75	278.00	2.00	113.03	-	1725.78	1970.35	2500.00	529.65
7	28	Other structures, snowshoe cabin	(a)	799.52	-	849.47	115.00	6.25	24.57	-	995.29	1794.81	1200.00	594.81 R.E.
8	46c	Erosion control, bank sloping		1266.50	-	323.91	36.50	10.00	2.50	89.46	462.37	1728.89	2500.00	771.13
9	14b	Trails, foot	(c)	93.70	-	83.15	11.50	0.75	-	-	95.40	189.10	250.00	60.90
10	29	Fences other than corral at Govern-ment Camp	(d)	-	-	-	-	-	-	-	-	-	-	-
11a	31b	Water system, Snowshoe Cabin pipe line	(a)	82.83	-	95.02	14.50	0.75	0.50	-	110.77	193.60)	600.00	381.81
11b	31c	Water system, Snowshoe Cabin Wells	(a)	3.50	-	15.65	2.50	0.18	2.76	-	21.09	24.59)		
12	22	Public camp ground clearing		370.05	-	99.37	11.75	2.75	.10	19.51	133.48	503.53	250.00	253.53 R.E.
13	24	Public camp ground latrines		39.40	-	20.29	2.00	0.25	2.30	134.66	159.50	198.90	200.00	1.10
14	25b	Public camp ground water system		20.00	-	29.59	3.00	0.25	-	-	32.84	52.84	100.00	47.16
15	26b	Public camp ground waste disposal pits		-	-	19.81	2.15	-	1.25	-	23.21	23.21	25.00	1.779
16	27	Other camp ground facilities		140.75	-	255.43	30.00	1.00	7.25	-	293.68	434.43	400.00	34.43 R.E.
17	44a	Surveying, linear throughout Park		1443.80	-	133.34	16.75	11.25	1.35	5.92	168.61	1612.41	450.00	1162.41 R.E.
18	44a	Surveying, linear, boundary survey		-	-	-	-	-	-	-	-	-	150.00	150.00
19	51	Corrals, Snowshoe Cabins		62.40	-	1874	2.73	0.50	-	-	21.49	83.89	130.00	46.11
20		Rodent Control		-	-	-	-	-	-	-	-	-	25.00	25.00
21	47c	Bridges, vehicle		-	-	-	-	-	-	-	-	-	125.00	125.00
22	48c	Fish restocking		-	-	-	-	-	-	-	-	-	250.00	250.00
23	11	General cleanup, other than fire protection	(e)	148.00	-	5.15	0.50	1.25	-	45.64	52.57	200.54	-	200.54 R.E.
24	18	Tool boxes	(f)	-	-	-	-	-	-	-	-	-	-	-
25	8	Fire fighting		467.30	-	113.78	14.00	3.75	-	-	131.53	598.83	-	598.83 R.E.
26	9	Fire pre-suppression		-	-	-	-	-	-	-	-	-	-	-
TOTALS				13885.73		8095.37	1123.65	108.18	737.98	377.61	10442.79	24328.52	22055.00	2273.52 R.E.

- (a) Includes cost on this project incurred by crews from Camp Wineglass NP 2
- (b) All insect control work handled from Camp Annie Spring NP 1.
- (c) Only maintaining work done on this project, approved by Park Superintendent
- (d) This project transferred to Camp Wineglass in its entirety.

- (e) Minor project approved by Park Superintendent
- (f) Minor project approved by Park Superintendent, costs absorbed by other projects.
- (g) Sums obligated but not liquidated or distributed.

TABLE XVI
ANALYSIS OF PROJECT COSTS
CAMP WINEGLASS NP 2

PARK PRIOR- ITY	ECW 7 CLASS	DESCRIPTION	NOTES	PAY ROLL	TRAVEL EXPEN- SES	MAP SERIAL SUP- PLIES	FREIGHT	UTIL- ITIES	MISC.	ENC. (g)	COSTS		ESTI- MATE COST	BAL- ANCE
											OTHER LABOR	TOTAL COST		
1	4	Roadside cleanup.		1804.31	-	1045.61	287.00	25.50	5.72	-	1363.83	3168.14	2000.00	1168.14 RE
2	39a	Insect pest control	(a)	-	-	-	-	-	-	-	-	-	-	-
3	13a	Roads, truck trail		615.88	-	378.39	65.00	9.00	3.40	18.58	474.37	1090.25	600.00	490.25 RE
4	3	Removal of fire hazard		287.80	-	184.56	36.75	4.00	9.75	-	235.06	522.86	250.00	272.86 RE
5	1	Telephone lines	(b)	-	-	81.72	13.00	-	-	.82	99.54	95.54	150.00	54.46
6	14a	Trails, horse Video Falls		538.50	-	82.25	14.25	8.00	.10	98.06	202.65	741.15	1200.00	5.18
6a	14a	Trails, maintenance	(c)	292.40	-	132.27	25.00	4.00	-	-	161.27	453.67	-	-
7	22	Public camp ground clearing- Lost Creek		123.85	-	66.10	12.50	1.50	-	-	80.10	203.95	200.00	3.95 RE
8	51	Corrals, horse, Lost Creek		-	-	-	-	-	-	-	-	-	50.00	50.00
9	27	Other camp ground facilities- Lost Creek		-	-	-	-	-	-	-	-	-	300.00	300.00
10	47c	Bridges, vehicle, Bear Creek		-	-	-	-	-	-	-	-	-	100.00	100.00
11	29	Fences other than range, Government Camp	(d) (e)	62.80	-	365.75	67.50	1.00	9.08	-	443.33	506.13	300.00	206.13 RE
12	28	Other structures, Snowshoe Cabin-Bear Creek	(e)	-	-	-	-	-	-	-	-	-	-	-
13	31b	Water system, pipe line-Bear C Creek	(e)	-	-	-	-	-	-	-	-	-	-	-
14	51	Corrals, Bear Creek	(e)	-	-	-	-	-	-	-	-	-	-	-
15	11	General cleanup other than fire prevention	(f)	269.60	-	84.33	17.50	4.00	.50	-	106.33	375.93	-	375.93 RE
16	31b	Water system, pipe line Government Camp	(f)	46.00	-	1.70	.45	.50	-	11.11	13.76	59.76	-	59.76 RE
16a	31c	Water system, wells Government Camp	(f)	1.50	-	3.71	6.25	-	.50	-	10.46	11.96	-	11.96 RE
17a	53b	Landscaping, fine grading	(e)	-	-	-	-	-	-	-	-	-	-	-
17b	53c	Landscaping, soil preparatory	(e)	-	-	-	-	-	-	-	-	-	-	-
17c	53d	Landscaping, seedings and for sodding, trees	(e)	-	-	-	-	-	-	-	-	-	-	-
17d	53e	Landscaping, moving and planting trees.	(e)	-	-	-	-	-	-	-	-	-	-	-
18	13c	Roads, highway, setting snow poles	(b)	63.50	-	21.50	6.25	1.00	-	-	28.75	92.25	-	92.25 RE
19	8	Fighting forest fires		116.80	-	49.60	8.50	1.50	-	.67	60.27	177.07	-	177.07 RE
20	19c	Fire pre-suppression		6.28	-	-	-	-	-	-	-	6.28	-	6.28 RE
21	13c	Roads, highway, maintenance	(c)	-	-	3.52	-	-	-	.90	4.42	4.42	-	4.42 RE
22	31a	Water facilities, moving tank Mt. Scott	(b)	60.58	-	19.00	3.00	1.00	-	-	23.00	83.58	-	83.58 RE
TOTALS				4289.80		2520.01	562.95	61.00	29.05	130.13	3303.14	7592.94	5150.00	2442.94 RE

- (a) Entire project transferred to Camp Annie Spring NP 1. See Table XV. (f) Minor project approved by Park Superintendent.
- (b) Only maintenance work done on the project. Minor change approved by Park Superintendent.
- (c) Maintenance work required to open trails and roads in spring. Minor project approved by Park Superintendent. (g) Sums obligated but not liquidated nor distributed.
- (d) Work on this project originally assigned to Camp Annie Spring NP 1 but transferred to Camp Wineglass NP 2
- (e) Work on this project done by Camp Wineglass NP 2, but it was originally a part of Camp Annie Spring NP 1 program. All costs in Camp Wineglass records.

TABLE XIII
PROJECT UNITS COMPLETED BY MONTHS

NP 2A
CAMP OREGON CAVES

Priority Number	ECW 7 Number	Description	Units	April	May	June	July	Aug.	Sept.	Oct.	Total	Est. Total
1	31b	Water systems, pipe line from Lake Creek	feet	-	-	-	0	0	0	0	0	8000
2	31a	Water systems, storage facilities	M gal	-	-	-	-	-	-	-	-	45
3	28	Other structures, spike camp buildings	number	-	-	17	3	0	0	0	20	20
4	3	Removal of fire hazards	acres	-	-	6	2	2	1	0	11	40
5	2	Firebreak	miles	-	-	-	-	-	-	-	-	1
6	16	Dwelling at permanent station for ranger	number	-	-	-	-	-	-	-	-	1
		Other structures, improving septic tank (a)	feet	-	-	-	-	300	400	0	700	700
8	13b	Roads, minor for garbage disposal	miles	-	-	-	-	0.1	0.1	0	0.2	.125
9	28	Other structures, incinerator	number	-	-	-	-	-	-	-	-	1
10	18	Tool house for Ranger	number	-	-	-	-	-	-	-	-	1
11a	14b	Improving exit trails	miles	-	-	-	-	-	0.4	0	0.4	0.5
11b		Improving Cliff trails	miles	-	-	-	-	-	-	-	-	0.5
11c		Trail to Big Tree	miles	-	-	-	-	-	-	-	-	1.5
11d		Trail to Lake Bolon	miles	-	-	-	-	-	-	-	-	8.5
11e		Trail to Lake Mountain	miles	-	-	-	-	-	-	-	-	4.5
11f		Trail, Chateau to diesel plant	miles	-	-	-	-	-	-	-	-	2.0
12	48a	Water improvement, dam, pond and stream	acres	-	-	-	-	-	-	-	-	.25
13	47a	Bridges, foot, below Chateau	number	-	-	-	-	-	-	-	-	4
14	8	Fighting forest fires	man days	-	-	-	25	0	0	0	25	-
15	13b	Roads, minor, entrance to camp (c)	miles	-	-	-	0.1	0	0	0	0.1	(b)
16	47c	Bridges, vehicle across Sucker Creek (c)	number	-	-	-	1	0	0	0	1	(b)

(a) Program lists this as number ECW 7 classification 28. Should be 700 feet sewer pipe under miscellaneous ECW 7 classification.

(b) Minor project not on original program. Changes approved by Park Superintendent.

(c) Maintenance project.

TABLE XVIII
COMPLETE PROJECT COSTS
INCLUDING ALLOWANCE FOR ENROLLMENT LABOR

CAMP ANNIE SPRINGS NP 1

PRIOR- ITY	ECW 7 CLASS	DESCRIPTION	NOTES	LABOR COSTS			COSTS OTHER THAN LABOR	TOTAL EST. COST OF US GOVERNMENT
				SUPER- VISORY	ENROL- LEE (EST.)	TOTAL		
1a	53b	Landscaping, fine grading on road slopes around areas.	(a)	301.75	1035.00	1336.75	133.85	1470.60
1b	53c	Landscaping, soil preparation	(a)	1315.41	9450.00	10765.41	849.89	11615.30
1c	53d	Landscaping, seeding and for sodding.	(a)	857.52	1750.00	2607.52	686.15	3293.67
1d	53e	Landscaping, moving and planting trees.	(a)	874.30	6150.00	7024.30	838.75	7863.05
2	39a	Insect pest control, entire park.	(b)	1477.45	2860.00	4337.45	475.77	4813.22
3	4	Roadside cleanup.		2352.95	13720.00	16072.95	1903.76	17976.71
4	13a	Truck trails.		1254.43	3770.00	5024.43	1053.08	6077.51
5	1	Telephone lines.	(c)	269.60	750.00	1019.60	73.96	1093.56
6	28	Other structures, lumber sheds.		244.57	1720.00	1964.57	1725.78	3690.35
7	28	Other structures, Snowshoe Cabin.	(a)	799.52	2010.00	2809.52	995.29	3804.81
8	46c	Erosion control, bank sloping.		1266.50	7860.00	9126.50	462.37	9588.87
9	14b	Trails, foot	(c)	93.70	1140.00	1233.70	95.40	1329.10
10	29	Fences other than corral at Government Camp	(d)	-	-	-	-	-
11a	31b	Water system, Snowshoe Cabin pipe line	(a)	82.83	190.00	272.83	110.77	383.60
11b	31c	Water system, Snowshoe Cabin wells.	(a)	3.50	40.00	43.50	21.09	64.59
12	22	Public camp ground clearing.		370.05	1355.00	1725.05	133.48	1858.53
13	24	Public camp ground latrines.		39.40	210.00	249.40	159.50	408.90
14	25b	Public camp ground water system.		20.00	-	20.00	32.84	52.84
15	26b	Public camp ground waste disposal pits.		-	30.00	30.00	23.21	53.21
16	27	Other camp ground facilities.		140.75	720.00	860.75	293.68	1154.45
17	44a	Surveying, linear, throughout park.		1443.80	785.00	2228.80	168.61	2397.41
18	44a	Surveying, linear, boundary survey.		-	-	-	-	-
19	51	Corrals, Snowshoe abin.		62.40	295.00	357.40	21.49	378.89
20		Rodent control.		-	-	-	-	-
21	47c	Bridges, vehicle.		-	-	-	-	-
22	48c	Fish restocking.		-	280.00	280.00	-	280.00
23	11	General cleanup, other than fire protection.	(e) (f)	148.00	480.00	628.00	52.54	680.54
24	18	Tool boxes.	(f)	-	145.00	145.00	-	145.00
25	8	Fire fighting.		467.30	4025.00	4492.30	131.53	4623.83
26	9	Fire pre-suppression.		-	125.00	125.00	-	125.00
TOTALS				13885.73	60895.00	74780.73	10442.79	85223.52

- (a) Includes cost on this project incurred by crews from Camp Wineglass NP 2.
(b) All insect control work handled from Camp Annie Spring NP 1.
(c) Only maintaining work done on this project, approved by Park Superintendent.
(d) This project transferred to Camp Wineglass in its entirety.
(e) Minor project approved by Park Superintendent.
(f) Minor project approved by Park Superintendent, cost absorbed by other projects.
(g) Sums obligated but not liquidated or distributed.

TABLE XLX
COMPLETE PROJECT COSTS
INCLUDING ALLOWANCE FOR ENROLLEE LABOR

CAMP WINEGLASS NP 2

PRIOR- SITE-	ECW 7 CLASS	DESCRIPTION	NOTES	LABOR COSTS			COSTS OTHER THAN LABOR	TOTAL EST. COST OF US GOVERNMENT
				SUPER- VISORY	ENROL- LEE (EST.)	TOTAL		
1	4	Roadside cleanup.		1804.31	10400.00	12204.31	1363.83	13568.14
2	39a	Insect pest control.	(a)	-	-	-	-	-
3	13a	Roads, truck trail.		515.88	3720.00	4335.88	474.37	4810.25
4	3	Removal fo fire hazard.		287.80	1770.00	2057.80	235.06	2292.86
5	1	Telephone lines.	(b)	-	1135.00	1135.00	95.54	1230.54
6	14a	Trails, horse Videa Falls		538.50	2520.00	3058.50	202.65	3261.15
6a	14a	Trails, maintainance.	(c)	292.40	1635.00	1927.40	161.27	2088.67
7	22	Public camp ground clearing-Lost Creek		123.85	645.00	768.85	80.10	848.95
8	51	Corrals, horse, Lost Creek		-	-	-	-	-
9	27	Other camp ground facilities-Lost Creek		-	-	-	-	-
10	47c	Bridges, vehicle-Bear Creek		-	-	-	-	-
11	29	Fences other than range, Government Camp.	(d)	62.80	120.00	182.80	443.33	626.13
12	28	Other structures, Snowshoe Cabin-Bear Creek.	(e)	-	-	-	-	-
13	31b	Water system, pipe line-Bear Creek.	(e)	-	-	-	-	-
14	51	Corrals, Bear Creek	(e)	-	-	-	-	-
15	11	General cleanup other than fire prevention.	(f)	269.60	1710.00	1976.60	106.33	2085.93
16	31b	Water system, pipe line, Government Camp.	(f)	46.00	75.00	121.00	13.76	134.76
16a	31c	Water system, wells, Government Camp.	(f)	1.50	65.00	66.50	10.46	76.96
17a	53b	Landscaping, fine grading.	(e)	-	-	-	-	-
17b	53c	Landscaping, soil preparitory.	(e)	-	-	-	-	-
17c	53d	Landscaping, seeding and for sodding.	(e)	-	-	-	-	-
17d	53e	Landscaping, mowing and planting trees.	(e)	-	-	-	-	-
18	13c	Roads, highway, setting snow poles.	(b)	63.50	145.00	208.50	28.75	237.25
19	8	Fighting forest fires.		116.80	2380.00	2496.80	60.27	2557.07
20	9	Fire pre-suppression.		6.28	260.00	266.28	-	266.28
21	13c	Roads, highway, maintainance.	(c)	-	1540.00	1540.00	4.42	1544.42
22	51a	Water facilities, moving tank-Mt.Scott	(b)	60.58	135.00	195.58	23.00	218.58
TOTALS				4289.80	28255.00	32544.80	3303.14	35847.94

- (a) Includes cost on this project incurred by crews from Camp Wineglass NP 2.
(b) All insect control work handled from Camp Annie Spring NP 1.
(c) Only maintainance work done on this project, approved by Park superintendent.
(d) This project transferred to Camp Wineglass in its entirety.
(e) Minor project approved by Park Superintendent.
(f) Minor project approved by Park Superintendent, costs absorbed by other projects.

TABLE XX
COMPLETE PROJECT COSTS
INCLUDING ALLOWANCE FOR ENROLLEE LABOR

CAMP OREGON CAVES NP 2a
AND LAVA BEDS NP 1a.
ALSO TOTALS ALL CAMPS

PRIOR- ITY	ECW 7 CLASS	DESCRIPTION	NOTES	SUPER- VISORY	ENROL- LEE (EST.)	TOTAL	COSTS	
							OTHER THAN LABOR	TOTAL EST. COST OF US GOVERNMENT
1	31b	Water system, pipe line.		240.80	250.00	490.80	49.58	540.38
2	31a	Water system, storage tank.		-	-	-	-	-
3	28	Other structures, camp buildings.		1832.70	1675.00	3507.70	1628.77	5136.47
4	3	Removal of fire hazard.		921.08	4150.00	5071.08	665.50	5736.58
5	2	Fire breaks.		-	-	-	-	-
6	16	Dwellings at permanent stations-Ranger.	(c)	58.50	-	58.50	45.86	104.36
7		Septic tank overflow.		147.13	315.00	462.13	193.89	656.02
8	13b	Roads, minor, for garbage disposal.		119.00	720.00	839.00	39.40	878.40
9	28	Other structures, incinerator.		-	-	-	-	-
10	18	Tool house.		-	-	-	-	-
11	14b	Trails, foot		85.95	180.00	265.95	30.94	296.89
12	48a	Water improvements below Chateau.		-	-	-	-	-
13	47a	Bridges, foot		-	-	-	-	-
14	8	Fighting forest fires.		-	90.00	90.00	-	90.00
15	13b	Roads, minor, to CCC Camp	(a)	42.00	140.00	182.00	-	182.00
16	47c	Bridges, vehicle, to CCC Camp.	(a)	20.03	170.00	190.03	-	190/03
		TOTALS		3467.19	7690.00	11157.19	2653.94	13811.13
		Lava Beds Total		192.00	-	192.00	198.66	390.66
				TOTALS				
		Annie Spring		13885.73	60895.00	74780.73	10442.79	85223.52
		Wineglass		4289.80	28255.00	32544.80	3303.14	35847.94
		Oregon Caves		3467.19	7690.00	11157.19	2653.94	13811.13
		Lava Beds		192.00	-	192.00	198.66	390.66
				GRAND TOTALS				
				21834.72	96840.00	118674.72	18598.53	135273.25

- (a) Minor project approved by Park Superintendent.
(b) Sums obligated, but not liquidated not distributed.
(c) Temporary quarters for Ranger season of 1934, minor project change approved by Park Superintendent.

TABLE XXI
 COSTS OF PROJECTS BY UNITS
 OF WORK ACCOMPLISHED
 ALSO MAN DAYS REQUIRED TO
 PERFORM THE WORK BY UNITS

CAMP ANNIE SPRING NP-

PARK PRIOR- ITY	ECW 7 CLASS.	DESCRIPTION	NOTES	WORK		COST		PER UNIT COSTS		TOTAL COSTS EXCLUSIVE OF ENR. LABOR	TOTAL COSTS	ENROLLED MAN DAYS PER UNIT
				ACCOMPLISHED AMOUNT	SUPER. UNIT LABOR	ENROLL. EST. LABOR	TOTAL LABOR	OTHER THAN LABOR				
1a	53b	Landscaping, fine grading on road slopes around areas.	(a)	175	yds.	1.73	5.92	7.65	0.76	2.49	8.41	1.7
1b	53c	Landscaping, soil preparation	(a)	10144	sq.yds.	0.77	0.93	1.06	0.08	0.21	1.14	0.2
1c	53d	Landscaping, seeding and sodding	(a)	1	acre	857.52	1750.40	2607.52	686.15	1547.67	7297.87	496.00
1d	53e	Landscaping, moving and planting trees	(a)	9545	No.	0.09	0.64	0.73	0.09	0.16	0.82	0.2
2	39a	Insect pest control entire Park	(b)	31000	acres	0.05	0.09	0.14	0.02	0.07	0.16	0.2
3	4	Roadside cleanup		18.7	Mi.	126.00	735.00	861.00	102.00	228.00	930.00	208.0
4	13a	Truck trails		8.0	Mi.	157.00	471.00	628.00	172.00	289.00	760.00	131.1
5	1	Telephone lines	(c)	18.0	Mi.	14.95	41.70	56.65	4.11	19.06	60.77	11.8
6	28	Other structures, lumber sheds		3	No.	81.15	572.00	653.15	575.00	656.15	1228.15	162.0
7	28	Other structures, snowshoe cabin	(a)	3	No.	266.00	670.00	936.00	331.50	597.50	1267.50	189.5
8	46c	Erosion control, bank sloping		116800	sq.yds.	0.01	0.07	0.08	0.01	0.02	0.09	0.02
9	14b	Trails, foot		11	Mi.	8.50	107.80	112.30	8.65	17.15	120.95	29.3
10	29	Fences other than corral at Government Camp.	(d)	-	-	-	-	-	-	-	-	-
11a	31b	Water system, Snowshoe Cabin pipe line	(a)	1231	feet	0.07	0.15	0.22	0.09	0.16	0.31	0.04
11b	31c	Water system, Snowshoe Cabin wells	(a)	2	No.	1.75	20.40	21.75	10.54	12.24	32.24	6.0
12	22	Public camp ground clearing		20	Acres	18.50	67.80	86.30	6.65	25.15	92.95	19.2
13	24	Public camp ground latrines		4	No.	9.85	52.50	62.35	39.85	49.70	102.20	15.0
14	25b	Public camp ground water system		0	No.	-	-	-	-	-	-	-
15	26b	Public camp ground waste disposal pits		2	No.	0.00	15.00	15.00	11.60	11.60	26.60	4.5
16	27	Other camp ground facilities		13	No.	10.82	55.45	66.27	22.55	33.37	88.82	15.7
17	44a	Surveying, linear, throughout Park		100	Mi.	14.44	7.85	22.29	1.69	16.13	23.98	2.2
18	44a	Surveying, linear, boundary Survey		0	Mi.	-	-	-	-	-	-	-
19	51	Corrals, Snowshoe Cabins		3	No.	20.75	98.20	118.95	7.15	27.90	126.10	27.8
20		Rodent Control		0	No.	-	-	-	-	-	-	-
21	47c	Bridges, vehicles		0	No.	-	-	-	-	-	-	-
22	48c	Fish restocking		54000	No.	-	0.005	0.005	-	-	0.005	-
23	11	General cleanup, other than fire-protection.	(e)	1	Acres	148.00	480.00	628.00	52.54	200.54	680.54	136.0
24	18	Tool boxes		14	No.	-	10.35	10.35	-	-	10.35	2.9

- (a) Includes cost on this project incurred by crews from Camp Wineglass NP 2
- (b) All insect control work handled from Camp Annie Spring NP 1
- (c) Only Only maintaining work done on this project, approved by Park Superintendent
- (d) This project transferred to Camp Wineglass in its entirety
- (e) Minor project approved by Park Superintendent
- (f) Minor project approved by Park Superintendent, cost absorbed by other projects

TABLE XXII
 COST OF PROJECTS BY UNITS OF WORK ACCOMPLISHED
 ALSO MAN DAYS REQUIRED TO PERFORM THE WORK BY UNITS

NP 2
 CAMP WINEGLASS

PRIORITY NUMBER	ECW # Number	Description	Work		Sup. Labor	Enc. Labor	COSTS		PER UNIT		Enrollee Man Days per unit
			Accomplished Amt.	Units			Total Labor costs	Other	Total Costs Enc.	Total Cost	
1	4	Roadside cleanup	10	Mi.	180.43	1040.00	1220.43	136.38	316.81	1356.81	294.00
2	39a	Insect pest control, trees	-	-	-	-	-	-	-	-	-
3	13a	Roads, truck trails	9.5	Mi.	64.48	392.00	456.48	49.90	114.38	506.38	111.00
4	3	Removal of fire hazard	1	Acre	287.80	1770.00	2057.80	235.06	522.86	2292.86	502.00
5	1	Telephone lines	12	Mi.	-	94.50	94.50	7.95	7.95	102.45	26.8
6	14a	Trails, horse Vidae Falls	2	Mi.	269.25	1260.00	1529.25	101.32	370.37	1630.57	356.0
6a	14a	Trails, maintainance	4	Mi.	73.10	408.00	481.10	40.30	113.40	521.40	115.6
7	22	Public camp ground clearing, Lost Creek	1	Acre	123.85	645.00	768.85	80.10	203.95	848.95	183.0
8	51	Corrals, horse-Lost Creek	0	No.	-	-	-	-	-	-	-
9	27	Other camp ground facilities	0	No.	-	-	-	-	-	-	-
10	47c	Bridges, vehicle, Bear Creek	0	No.	-	-	-	-	-	-	-
11	29	Fences other than range, corral at Gov't. camp.	0	No.	-	-	-	-	-	-	-
12	28	Other structures, snowshoe cabin- Bear Creek	-	-	-	-	-	-	-	-	-
13	31b	Water systems, pipe lines, Bear Creek	-	-	-	-	-	-	-	-	-
14	51	Corrals, Bear Creek	-	-	-	-	-	-	-	-	-
15	11	General cleanup other than fire prevention, Gov't. Camp	6	Acre	44.90	285.00	329.90	17.70	62.60	347.60	80.5
16	31b	Water systems, pipe lines above Gov't. Camp	100	Ft.	.46	.75	1.21	.14	.60	1.25	.2
16a	31c	Water systems, wells and water holes above Government Camp	7	No.	.21	9.28	9.49	1.50	1.71	10.99	2.6
17a	53b	Landscaping, fine grading on road slopes	-	-	-	-	-	-	-	-	-
17b	53c	Landscaping, soil preparation	-	-	-	-	-	-	-	-	-
17c	53d	Landscaping, seeding and/or sodding	-	-	-	-	-	-	-	-	-
17d	53e	Landscaping, moving and planting trees	-	-	-	-	-	-	-	-	-
18	13c	Roads, highway maintainance, setting snow poles	40	Mi.	1.62	3.63	5.25	.72	2.34	5.97	1
19	8	Fighting forest fires	672	Mo.	.18	3.53	3.71	.09	.27	3.80	1
20	9	Fire pre-suppression	74	Mo.	.09	3.53	3.62	-	.09	3.62	1
21	13c	Roads, highway maintainance	8	Mi.	-	193.00	193.00	.55	.55	193.55	54.5
22	31a	Water systems, storage facilities-Mt. Scott	1	M Gal	60.58	135.00	195.58	23.00	83.58	218.58	38

TABLE XVII
ANALYSIS OF PROJECT COSTS

OREGON CAVES NP-2a --- LAVA BEDS NP-1a
AND TOTAL ALL CAMPS

PRIOR- ITY	ECW 7 CLASS.	DESCRIPTION	NOTES	PAY ROLL	TRAVEL EXPEN- SES	MAT- ERIAL SUP- PLIES	FREIGHT	UTIL- ITIES	MISC.	ENCUMBERED	COSTS OTHER THAN LABOR	TOTAL COSTS	ESTI- MATED	BALANCE
1	31b	Water system pipe line		240.80	-	48.40	1.00	0.08	0.10	-	49.58	290.38	4900.00	4609.62
2	31a	Water system, storage tank		-	-	-	-	-	-	-	-	-	1550.00	1550.00
3	28	Other structures, camp buildings		1832.70	-	1582.03	30.25	7.72	4.60	4.17	1628.47	3461.47	1500.00	1961.47 R.E.
4	3	Removal of fire hazard		921.08	-	649.35	16.00	0.10	0.05	-	665.50	1586.58	1650.00	63.42
5	2	Fire breaks		-	-	-	-	-	-	-	-	-	300.00	300.00
6	16	Dwellings at permanent stations - Rangers	(c)	58.50	-	43.68	1.18	0.50	0.50	-	45.86	104.36	1500.00	1395.64
7		Septic tank overflow		147.13	-	1888.49	3.75	-	1.65	-	193.89	341.02	300.00	41.02 R.E.
8	13b	Roads, minor, for garbage disposal		119.00	-	38.15	1.25	-	-	-	39.40	158.40	200.00	41.60
9	28	Other structures incinerator		-	-	-	-	-	-	-	-	-	75.00	75.00
10	18	Tool house		-	-	-	-	-	-	-	-	-	250.00	250.00
11	14b	Trails, foot		85.95	-	29.69	1.25	-	-	-	30.94	116.89	450.00	333.11
12	48a	Water improvements below Chateau		-	-	-	-	-	-	-	-	-	175.00	175.00
13	47a	Bridges, foot		-	-	-	-	-	-	-	-	-	200.00	200.00
14	8	Fighting forest fires		-	-	-	-	-	-	-	-	-	-	-
15	13b	Roads, minor, to CCC Camp	(a)	42.00	-	-	-	-	-	-	-	42.00	-	42.00 R.E.
16	47c	Bridges, vehicle, to CCC Camp	(a)	20.03	-	-	-	-	-	-	-	20.03	-	20.03
TOTALS				3467.19	-	2579.79	54.68	8.40	6.90	4.17	2653.94	6123.13	1350.00	6928.87
LAVA BEDS TOTAL				192.00	-	151.32	4.11	4.40	2.80	36.03	198.66	390.66	2275.00	1884.34
ANNIE SPRING TOTAL				13885.73	-	8095.37	1123.65	108.18	737.98	377.61	10442.79	24328.52	22055.50	2273.52 R.E.
WINEGLASS TOTAL				4289.80	-	2520.01	562.95	61.00	29.05	130.13	3303.14	7592.94	5150.00	2442.94 R.E.
OREGON CAVES				3467.19	-	2579.79	54.68	8.40	6.90	4.17	2653.94	6121.13	1350.00	6928.87
GRAND TOTAL				21834.72		13346.49	1745.39	181.98	776.73	547.94	16598.53	38433.25	42530.00	4096.75

(a) Minor project approved by Park Superintendent).

(b) Sums obligated, but not liquidated nor distributed.

(c) Temporary quarters for Ranger season of 1934, minor project change approved by Park Superintendent.

TABLE XXIV
STRENGTH REPORT OF ENROLLEES BY CAMPS AS OF FRIDAY OF WEEK SHOWN

WEEK ENDING FRIDAY	CAMP ANNIE SPRING NP-1		CAMP WINEGLASS		TOTAL ALL CAMPS	
	Work Project	Total Enroll- ment	Work Project	Total Enroll- ment	Work	Total
April 27th	73(a)	94	35	92	108(a)	186
May 4th	134(a)	157	115	183	249(a)	340
11th	146(a)	175	35	196	181(a)	371
18th	70	177	123	199	193	376
24th	95	185	123	199	218	384
June 1st	113	185	130	197	243	382
8th	97	181	153	195	250	376
15th	132	172	158	194	290	366
22nd	134	169	158	194	292	363
29th	131	163	117	193	248	356
July 6th	149	189	116	145	265	334
13th	143	186	112	146	255	332
20th	137	186	121	146	258	332
27th	141	179	175	205	316	384
Aug. 3rd	141	182	169	200	310	382
10th	146	178	176	200	322	378
17th	141	173	169	196	310	369
24th	142	173	162	192	304	365
31st	142	170	163	190	305	360
Sept. 7th	139	170	162	188	301	358
14th	130	170	162	189	292	259
21st	129	169	160	187	289	356
28th	127	168	160	186	287	354
Oct. 5th	131	165	96	124	227	289
12th	97	195(e)	90	123	187	318

Average number of Enrollees	126	172	134	178	260	350
-----------------------------------	-----	-----	-----	-----	-----	-----

Average percentage of
Enrollment turned over
to Work Projects 73.4

75/0%

74/0%

- (a) Includes men on Camp Construction. Camp Annie Spring
- (b) Includes Oregon Caves Detached Camp
- (c) Includes Transfers to Camp Evans Creek

TABLE XXV

MONTHLY STRENGTH REPORT AND PAY ROLL
 SUPERVISING AND FACILITATING PERSONNEL
 ALL ECW CAMPS UNDER THE JURISDICTION OF CRATER LAKE NATIONAL PARK

MONTH ENDING	NUMBER OF EMPLOYEES					TOTAL	TOTAL* PAY ROLL
	MISC.**	ANNIE SPRING	MODOC	WINEGLASS	OREGON CAVES		
April 30	1	8	-	4	-	13	893.21
May 31	2	14	1	6	9	31	3100.63
June 30	2	1	9	8	4	26	4177.82
July 31	3	13	-	7	3	28	3736.52
Aug. 31	3	11	-	8	3	27	3850.40
Sept. 30	3	11	-	8	3	27	3684.97
Oct. 22	4	10	-	6	2	22	2580.48

* Gross salary but does not include salaries of employees hired from San Francisco office.

** Includes Wildlife Technician, clerical help and supervising mechanic but does not include employees hired from San Francisco office.

TABLE XXVI
SUMMARY OF TREES
TREATED BY INSECT CONTROL CREWS

	Fir Red	Fir White	Hemlock	Pine Lodge pole	Pine Sugar	Pine White	Pine Yellow	Total
Sun Creek area	53	8	-	-	2	-	119	182
Skiddoo Lake	205	-	3	6	-	4	-	218
Trapper Creek	249	-	1	2	-	-	-	252
Annie Spring Addition	334	-	-	13	1	-	20	368
Total	841	8	4	21	3	4	139	1020

TABLE XXVII

SUMMARY OF TREES, SHRUBS AND PLANTS MOVED AND PLANTED
AND SOIL PREPARED BY LANDSCAPE CREWS FROM
CAMPS ANNIE SPRING NP-1, AND WINEGLASS, NP-2

Name	Planted	Name	Planted
<u>Perennials</u>			
Columbine	800	Twinberry	1680
Phlox	1300	Elderberry	556
Bleeding hearts	850	Mountain Ash	957
Valerian	110	Mazama Currant	300
Hellebore	200	Spiraea	722
Pearly everlasting	50	Kalmias	30
Jacobs ladder	25	Sierra Maple	351
Gilia	50	Huckleberry	270
Indian paint brush	100	Currant (tall)	14
Fleabane	90	Oceanspray	50
Total	3575	Manzanita	64
<u>Trees</u>			
12 ft to 18 ft in height.	45	Willows	30
2 ft to 4 ft in height.	900	Alders	20
Total	945	Chinquapin	27
		Serviceberry	175
		Cascara	32
		Western chokecherry	27
		Miscellaneous shrubs	200
		Total	5225

SOIL PREPARATION

Material	Truck loads	Cubic yds.
Peat	500	772
Top-soil	1000	1565
Sod	290	290
Fine execution	200	264
Total	1990	2891

TABLE XXVIII
 COMPARISON OF WORK ACCOMPLISHED AND MAN DAYS REQUIRED
 DURING FIRST AND THIRD ENROLLMENT PERIODS
 CRATER LAKE NATIONAL PARK

Description	FIRST PERIOD			THIRD PERIOD*		Man Days
	Amount	Units	Man Days	Amount	Units	
Insect Control	30767	Acres	2560	31000	Acres	810
Roadside Cleanup	12.7	Mi.	6736	28.7	Mi.	6787
Fish Planting	120000	No.	79	54000	No.	79
Surveying	25	Mi.	256	100	Mi.	223
Building Snowshoe Cabins	25	No.	300	2.5	No.	573
Truck Trails	31	Mi.	1930	17.5	Mi.	2120
Fire Fighting (Includes fire pre suppression)	-	-	37	-	-	1946
Horse Trails	2	Mi.	1087	2	Mi.	716
Public Camp ground Cleanup	15	Acres	374	21	Acres	567
Miscellaneous Projects	-	-	13362			13821
Miscellaneous Projects			5957			13096
Total All Projects (Exclusive of Camp Construction)	-	-	19319			26917
Camp Construction			2692			475
Total Man Days on all Projects for entire Enrollment Period			22011			27392

* Does not include Camp Oregon Caves

TABLE XXIX
 TABULATION SHOWING DATES OF APPOINTMENT AND TERMINATION, RATES OF
 PAY, AND TITLES, SUPERVISORY AND FACILITATING PERSONNEL
 ALL ECW CAMPS UNDER JURISDICTION OF CRATER LAKE NATIONAL PARK

NAME	CAMP	TITLE AND CHARACTER OF WORK	ANNUAL PAY *	APPOINTED	TERMINATED
Anderson, Theodore F.	NP 1	Foreman-road work and minor construction projects.	\$1680	July 3rd, 1934	August 14th, 1934
Bowns, L. G.	NP 1	Project Superintendent	\$2400	May 7th, 1934	October 20th, 1934
Briscoe, Frank D.	NP 1	Machine Operator	\$1620	April 30th, 1934	November 2nd, 1934
Bristow, S. J.	NP 2a	Carpenter	\$.85**	May 21st, 1934	June 14th, 1934
Buckman, C.	NP 2a	Carpenter	\$.85**	May 21st, 1934	June 14th, 1934
Buford, Howard W.	NP 1	Principal Foreman (Landscape)	\$2000	May 1st, 1934	October 22nd, 1934
Cadwallader, Eugene	NP 1	Packer and Guide	\$1380	August 7th, 1934	August 15th, 1934
Chandler, Herman J.	NP 2	Senior Foreman-roadside cleanup and trail construction	\$1800	May 7th, 1934	October 22nd, 1934
Cook, James L.	All	Supervising Mechanic	\$1500	April 26th, 1934	October 22nd, 1934
Cunningham, L. W.	NP 1	Spotter Foreman (Insect Control)	\$1380	April 23rd, 1934	June 24th, 1934
Curtis, William L.	NP 2a	Senior Foreman-construction projects	\$1800	April 17th, 1934	October 22nd, 1934
Dougherty, George J.	NP 1	Foreman	\$1680	May 7th, 1934	October 22nd, 1934
Dunkin, Harvey	NP 1	Spotter Foreman (Landscape)	\$1380	April 24th, 1934	May 12th, 1934
Edinborough, Howard C.	NP 2	Senior Foreman (Landscape)	\$1680	May 2nd, 1934	October 9th, 1934
Evans, Robert S.	NP 1	Naturalist Assistant (Wild Life Technician)	\$2000	July 15th, 1934	August 31st, 1934
Farmer, H.	NP 1	Laborer (Senior)	\$.70**	October 22nd, 1934	October 26th, 1934
Flury, Ted R.	NP 1	Machine Operator	\$1620	April 4th, 1934	April 30th, 1934
Foy, L. H.	NP 1	Foreman-construction projects	\$1680	May 7th, 1934	October 22nd, 1934
Goodard, C. A.	NP 2a	Carpenter	\$.85**	May 21st, 1934	June 14th, 1934
Goodard, J. K.	NP 2a	Carpenter	\$.90**	May 17th, 1934	June 19th, 1934
Goetse, Albert C.	NP 2	Tool sharpener	\$1500	May 5th, 1934	October 17th, 1934
Hendrickson, Glenn	NP 2	Foreman-roadside cleanup	\$1680	May 5th, 1934	October 22nd, 1934
Hogenson, J. P.	NP 2	Foreman-roadside cleanup and truck trail	\$1680	May 17th, 1934	October 22nd, 1934
Hubbard, Fersie, A.	NP 1	Machine Operator	\$1500	April 3rd, 1934	April 30th, 1934
Johns, D. E.	NP 1	Laborer (Senior)	\$.70**	October 22nd, 1934	October 26th, 1934
Johns, E. L.	NP 1	Senior Foreman-insect control, truck trail construction, erosion cont. and road cleanup	\$1800	May 1st, 1934	April 30th, 1934
Langston, Bert	NP 2a	Carpenter	\$.90**	May 17th, 1934	June 16th, 1934
Long, B.	NP 2a	Carpenter	\$.85**	May 21st, 1934	June 16th, 1934
Loosley, E. K.	NP 1	Foreman-roadside cleanup and snowshoe cabin construction	\$1680	May 14th, 1934	October 20th, 1934
McKinstry, Alice	All	ECW Clerk	\$1449	May 24th, 1934	***November 30th, 1934

* Gross Pay ** Hourly Gross Pay *** Terminated October 20th, but rehired October 30th, 1934.

**** till on Payroll

TABLE XXIX
 TABULATION SHOWING DATES OF APPOINTMENT AND TERMINATION, RATE OF
 PAY, AND TITLES, SUPERVISORY AND FACILITATING PERSONNEL
 ALL ECW CARDS UNDER JURISDICTION OF CRATER LAKE NATIONAL PARK

NAME	CAMP	TITLE AND CHARACTER OF WORK	ANNUAL PAY *	APPOINTED	TERMINATED
McPherson, Fred J.	NP 2a	Senior Foreman-removal of fire hazard and construction projects.	\$1680	May 7th, 1934	October 17th, 1934
Weade, Laurence A.	NP 1	Junior Foreman	\$1500	April 26th, 1934	May 14th, 1934
Weola, Anthony B.	NP 2	Principal Foreman (Landscaping)	\$2000	May 1st, 1934	October 22nd, 1934
Montgomery, J. W.	NP 1	Machine Operator	\$1500	April 3rd, 1934	May 20th, 1934
Patton, N. P.	NP 1	Senior Foreman-acting Project Superintendent until arrival of Mr. Bowns. Sr. Foreman on Insect Control, Truck Trail Construction and Roadside Cleanup.	\$1800	April 24th, 1934	October 20th, 1934
Porter, I. H.	NP 2a	Principal Foreman (Engineering)-in charge of Oregon Caves spike camp.	\$2000	May 9th, 1934	October 22nd, 1934
Prescott, Lee	NP 1	Foreman (Insect Spotting)	\$1380	April 21st, 1934	June 22nd, 1934
Ramey, A. M.	NP 1	Machine Operator	\$1620	April 3rd, 1934	April 22nd, 1934
Sadler, Paul R.	NP 1	Foreman-roadside cleanup and erosion control.	\$1680	May 7th, 1934	October 20th, 1934
Sexton, Berl W.	NP 1	Telephone Lineman	.84**	September 1st, 1934	October 22nd, 1934
Simmons, D. S.-	NP 2a	Carpenter	.85**	May 21st, 1934	June 6th, 1934
Smith, Lester	NP 1	Senior Foreman (Engineering)	\$1800	July 16th, 1934	October 20th, 1934
Solinsky, Frank J.	NP 1	Foreman (Insect Control)	\$1800	April 27th, 1934	May 17th, 1934
Swartzlow, Carl R.	NP 1a	Geological Technician	\$2400	May 29th, 1934	June 30th, 1934
Thompson, Geraldine	All	ECW Clerk	\$1680	September 1st, 1934	November 30th, 1934
Ticknor, Harry J.	NP 2	Project Superintendent	\$2400	May 14th, 1934	October 22nd, 1934
Walther, Lyle H.	NP 1	Principal Foreman (Engineering)	\$2000	May 18th, 1934	October 20th, 1934
Williams, Harry H.	N* 2	Senior Foreman-acting Project Superintendent until arrival of Mr. Ticknor, then removal of fire hazards, road maintenance and construction of snowshoe cabins.	\$1800	April 17th, 1934	October 22nd, 1934

* Gross Pay

** Hourly Pay

*** Still on Payroll

TABLE XXX
 CENSUS OF WILD LIFE WITHIN THE BOUNDARIES OF
 CRATER LAKE NATIONAL PARK

NAME OF ANIMAL OBSERVED	NUMBER OBSERVED	NUMBER ESTIMATED IN PARK
Deer, blacktail (Odocoileus columbianus)	35	150
Deer, muletail (Odocoileus hemionus)	1	25
Elk, Roosevelt (Cervus canadensis occidentalis)	3	15
Bear, black and brown (Ursus Americanus)	30	60
Mountain lion, cougar (Felis oregonensis)	4*	--
Coyote (Canis lestes)	5	60
Red fox (Vulpes cascanadensis)	1	10
Timber wolf (Canis gigas)	0	0
Beaver (Castor canadensis)	0	18
Marten (Mustella courina)	16	300
Badger (Taxidea americana)	4	35
Raccoon (Procyon pacifica)	2*	--
Ring-tailed Cat (Bassariseus astutus oregonus)	0	0
Otter (Lutra c. pacifica)	0	0

* Actual census, no estimate as to number to be found in the Park.

In addition to the above animals listed in the Census, there were many small animals common to the Park, as Chipmunks, Golden-mantled ground squirrel, marmots, mice etc. which were not counted.

TABLE XXXI
 RECAPITULATION OF MONTHLY ALLOTMENTS
 LEDGER REPORT BY CAMP AND PROCUREMENT AUTHORITY

PROCUREMENT AUTHORITY	MONTH	CAMP	OBLIGATIONS				NET MONTHLY EXPEN- DITURES	ALLOT- MENT	UNIN- CUMBERED BAL- ANCE
			DIRECT PAYMENT	AUTHORIZED VOUCHERS	LIQUID- ATED	AUTHOR- IZED			
		CAMP ANNIE SPRING NP 1			(a)			(b)	
570	April		-	534.63	546.96	-	12.33 RE	-	1334.10
570	May		-	2062.44	-	409.97	-	3500.00	2361.69
570	June		-	1762.63	115.69	714.59	-	3300.00	3300.16
570	July		9.60	3126.99	961.37	2299.89	-	2000.00	825.05
570	August		4.61	935.25	779.21	525.11	-	-	139.29
870	August		-	2375.47	166.31	1703.78	-	5000.00	1087.06
570	September		-	705.84	167.83	10.62	10.26	-	.92
870	September		.75	3360.16	1406.25	1178.94	-	3000.00	953.46
570	October		-	626.62	457.81	-	-	-	167.89 RE
870	October		-	1406.45	467.84	521.05	8.33	-	497.87 RE
570	November		-	553.21	364.89	31.46	RE 5227	-	319.48 RE
870	November		-	991.93	1039.48	71.96	RE 16.00	1500.00	1137.64
		TOTALS	14.96	18041.62	6473.64	7260.53	39.86	18300.00	818.16
		CAMP WINEGLASS NP 2			(a)				
570	April		-	269.26	7.88	-	-	-	160.44 RE
570	May		-	617.80	-	136.82	-	1000.00	88.94
570	June		-	1389.83	136.19	450.57	-	2000.00	384.73
570	July		-	1458.93	495.17	1651.51	-	1700.00	530.45 RE
570	August		-	240.13	258.93	522.26	-	-	1034.00 RE
870	August		-	1473.98	203.51	914.78	-	3500.00	1314.75
570	September		-	77.42	75.80	-	42.45	40.93 RE	993.07 RE
870	September		.75	1675.94	424.08	656.07	-	1500.00	906.47
570	October		-	598.58	429.95	-	-	-	1161.70 RE
870	October		-	966.66	545.06	353.86	-	-	131.01
570	November		246.49	276.58	568.68	-	-	45.61 RE	1116.09 RE
870	November		-	486.97	573.17	40.00	-	1000.00	1117.21
		TOTALS	246.84	9528.08	3658.42	4725.87	42.55	10700.00	1.12

(a) Previously paid but not liquidated

(b) Includes balance from first enrollment period allotment.

TABLE XXIII
 COSTS OF PROJECTS BY UNITS
 OF WORK ACCOMPLISHED
 ALSO MAN DAYS REQUIRED TO
 PERFORM THE WORK BY UNITS

CAMP OREGON CAVES NP 2 a

PARK PRIORITY	ECW 7 CLASS.	DESCRIPTION	WORK ACCOM- PLISHED		Supervi- sory LABOR	C O S T P E R U N I T			TOTAL COSTS EXCLUSIVE OF ENR. LABOR	TOTAL COST	PER UNIT ENROLLEE MAN DAYS
			AMT.	UNIT		ENROLLEE LABOR	TOTAL LABOR COSTS	COSTS OTHER THAN LABOR			
1	31b	Water systems, pipe line from Lake Creek	0	ft.	-	-	-	-	-	-	-
2	31a	Water systems, storage facilities near entrance.	0	Mgal.	-	-	-	-	-	-	-
3	28	Other structures, spike camp build- ings.	20	No.	91.60	83.60	175.20	81.50	173.10	256.70	23.6
4	3	Removal of fire hazards	11	acres	83.60	377.00	460.60	60.50	144.10	521.10	106.8
5	2	Fire break	0	No.	-	-	-	-	-	-	-
6	16	Dwelling at permanent stations, for ranger	0	No.	-	-	-	-	-	-	-
7	28	Other structures, improving septic tank	700	ft.	0.21	0.45	0.66	0.28	0.44	0.94	0.1
8	13b	Roads, minor, for garbage disposal	0.2	Mi.	595.00	3600.00	4195.00	197.00	4392.00	792.00	1019.0
9	28	Other structures, incinerator for cans	0	No.	-	-	-	-	-	-	-
10	18	Tool house for Ranger	0	No.	-	-	-	-	-	-	-
11a	14b	Improving exit trail	0.4	Mi.	214.50	450.00	664.50	77.20	291.70	741.70	127.2
12	48a	Water improvement, dam, small and stream.	0	acres.	-	-	-	-	-	-	-
13	47a	Bridges, foot below Chateau	0	No.	-	-	-	-	-	-	-
14	8	Fighting forest fires	25	Md.	-	-	-	-	-	-	-
15	13b	Roads, minor, entrance to camp	0.1	Mi.	420.00	1400.00	1820.00	-	420.00	1820.00	396.0
16	47c	Bridges, vehicle, Sucker Creek	1	No.	20.03	170.03	190.03	-	20.03	190.03	48.0

TABLE XXXI
 RECAPITULATION OF MONTHLY ALLOTMENTS
 LEDGER REPORT BY CAMP AND PROCUREMENT AUTHORITY

PROCUREMENT AUTHORITY	MONTH	DIRECT PAYMENT	AUTHORIZED VOUCHER	OBLIGATIONS			NET MONTHLY EXPEN- DITURES	ALLOT- MENT	UNIN- CUMBERED BAL- ANCE
				LIQUID- ATED	AUTHOR- IZED	REPAY			
				(a)					(b)
				CAMP LAVA BEDS NP 1a					
570	April	-	-	-	-	-	-	-	-
570	May	-	-	-	13.20	-	13.20	500.00	486.80
570	June	-	192.00	-	37.95	-	229.95	200.00	456.85
570	July	-	59.95	51.15	-	-	2.80	-	448.05
570	August	-	-	-	-	-	-	-	448.05
870	August	-	-	-	32.53	-	32.53	500.00	467.47
570	September	-	-	-	-	-	-	-	448.05
870	September	-	-	-	125.31	-	125.31	-	342.16
570	October	-	-	-	-	-	-	-	448.05
870	October	-	30.66	30.80	-	-	.14 RE	-	342.30
570	November	4.11	-	-	22.27	-	26.38	-	421.67
870	November	-	95.77	113.28	-	-	17.51 RE	-	359.81
	TOTALS	4.11	378.38	195.23	231.26	-	418.52	1200.00	781.48
				CAMP OREGON CAVES NP 2a					
570	April	-	-	-	-	-	-	-	-
570	May	-	1181.88	-	471.46	-	1653.34	1000.00	653.34 RE
570	June	-	1196.86	276.17	481.20	-	1401.89	3000.00	964.77
570	July	-	1167.83	713.37	261.54	-	716.00	900.00	1148.77
570	August	-	20.72	14.72	-	-	6.00	-	1142.77
870	August	-	513.11	41.98	582.00	-	1053.13	3000.00	1946.87
570	September	-	-	-	-	-	-	-	1142.77
870	September	.19	974.91	547.22	270.68	-	698.56	1500.00	2748.31
570	October	4.68	7.63	7.48	-	-	4.83	-	1137.94
870	October	-	2160.65	76.28	276.68	-	2761.05	-	387.26
570	November	-	96.11	96.93	4.73 RE	-	5.55 RE	-	1143.49
870	November	-	218.34	273.42	22.29	-	32.79 RE	-	420.05
	TOTALS	4.87	7578.04	2047.57	2361.12	-	7856.46	9400.00	1543.84

(a) Previously paid but not liquidated.

(b) Includes balance from first enrollment period.allotment.

TABLE XXXI
 RECAPITULATION OF MONTHLY ALLOTMENTS
 LEDGER REPORT BY CAMP AND PROCUREMENT AUTHORITY

PROCUREMENT AUTHORITY	MONTH	TOTAL ALL CAMPS	OBLIGATIONS				NET MONTHLY EXPEN- DITURES	ALLOT- MENT	UNIN- CUMBERED BAL- ANCE	
			DIRECT PAYMENT	AUTHORIZED VOUCHERS	LIQUID- ATED	AUTHOR- IZED				REPAY
570	April	-	803.89	554.84	-	-	249.05	-	1173.66	
570	May	-	3858.12	-	1031.45	-	4889.57	6000.00	2284.09	
570	June	-	4541.32	528.05	1684.31	-	5997.58	8500.00	5106.51	
570	July	9.50	5813.70	2221.06	4212.94	-	7815.18	4600.00	1891.33	
570	August	4.61	1196.10	1052.86	1047.37	-	1195.22	-	695.11	
870	August	-	4362.56	411.80	3233.09	-	7183.85	12000.00	4816.15	
570	September	-	383.26	243.63	10.62	52.81	97.44	-	598.67	
870	September	1.29	6011.01	2377.55	2231.00	-	5865.75	6000.00	4350.40	
570	October	4.68	1232.83	895.24	-	-	342.27	-	256.40	
870	October	-	4564.42	1119.98	1151.59	8.33	4567.70	-	362.70	
570	November	250.60	925.90	1030.50	13.92	RE 5.27	126.81	-	129.59	
870	November	-	1793.01	1939.35	9.67	RE 16.00	172.01	RE 2500.00	3034.71	
TOTALS			270.78	35486.12	12374.86	14578.78	82.41	37878.41	39600.00	3144.30
TOTALS FIRST ENROLLMENT PERIOD			29.53	23592.92	21065.13	21619.97	-	24177.29	25600.00	1422.71
TOTALS FIRST AND THIRD ENROL- MENT PERIODS.			300.31	59079.04	33439.99	36198.75	87.41	62055.70	65200.00	3144.30
NET COSTS THIRD ENROLLMENT PERIOD										
TOTAL NET FROM ABOVE.							37878.41			
PLUS LIQUIDATION FROM FIRST ENROLLMENT PERIOD.							554.84			
							<u>38433.25</u>			

(a) Previously paid but not liquidated.

(b) Includes balance from first enrollment period allotment.

TABLE XXXII
 TABULATION OF HEAVY EQUIPMENT ASSIGNED TO THE CAMPS UNDER THE
 JURISDICTION OF CRATER LAKE NATIONAL PARK

DESCRIPTION	MAKE	CAPACITY	MODEL	QUANTITY ASSIGNED
Trucks, Standard dump **	Chevrolet	1 1/2 tons	90D06	3
Convertible dump **	Chevrolet	1 1/2 tons	10B06	4
Standard stake ***	Chevrolet	1 1/2 tons	90D06	7
Standard stake ***	Chevrolet	1 1/2 tons	60C06	1
Standard stake ***	Ford	1 1/2 tons	BB	4*
Standard stake	Coleman	4 1/2 tons	L525	1
Pick-ups, Closed cab	Chevrolet	1 ton	60B05	2
Closed Cab	Ford	1 ton	B	1
Tractor with Gar Wood Trail builder	Cletrac		55	2
Tractor	Caterpillar		50	1
Air compressor, portable	Le Roi Rix	4 1/2 x 4 1/2	CTC-PD	1
Garage type	Curtis	1 5/8 x 2	H	2
Grinders, power portable	Lawson Ray	1 hp		3
Scrapers, roll-over dump Fresno		1 1/2 Cy.		2
Hammers, jack	Ingersoll-Rand		Small	2
Plow, combination trail	Hackley Rubotton			1
Drill press	Champion Blower and Forge Co.	1/2"	BB	1
Blower, forge	Champion Blower and Forge Co.		Small	1
Saw, drag	R. M. Wade Co.		Light Weight	2
Pumping unit, gasoline engine pump	Nelson Bros.	1 1/2 hp	VCG RCA	1

* One of these trucks was destroyed by fire, see Chapter IV

** 131" wheelbase *** 157" wheelbase

TABLE XXVIII
ARMY PERSONNEL

ASSIGNED TO CCC CAMPS
UNDER JURISDICTION OF
CRATER LAKE NATIONAL PARK

NAME	RANK	RESERVE ORGANIZATION	CAMP	STATIONED FROM	TO	REMARKS
Barris, Henry S.	2nd. Lieutenant	Infantry	NP - 1	April 25th	May 1st.	
Bundrant, Wm. C.	Doctor	-	NP - 1	July 16th	October 17th	Contract Surgeon
Christie, Walter	2nd. Lieutenant	Coast Artillery	NP - 2	May 1st	August 28th	
Clegg, Wm. L.	1st. Lieutenant	Infantry	NP - 1	August 29th	October 17th	
			NP - 2	September 22nd	October 15th	
			NP - 2	August 29th	September 26th	
			NP - 2	September 26th	October 22nd	In charge of Camp Construction
Colwell, Robert H.	2nd. Lieutenant	Cavalry	NP - 1	April 25th	July 7th	
Crowley, T. W.	Captain	Infantry	NP - 2	July 7th	August 20th	
Gentle, H. P.	1st. Lieutenant	Medical	NP - 1	April 25th	July 1st	Camp Surgeon
Harns, Herman L.	Captain	Ordinance	NP - 2	April 15th	May 1st	
Jeffress, Chas. H.	1st. Lieutenant	Quartermaster	NP - 2a	May 11th	September 26th	Commanding Officer
Johnson, Kenneth A.	2nd. Lieutenant	Signal	NP - 2	April 15th	August 29th	
Merrill, John T.	Captain	Field Artillery	NP - 2	April 15th	October 22nd	Commanding Officer
Miller, Fred H.	Doctor	-	NP - 1	July 27rd	August 29th	Contract Surgeon
Murray, John P.	Captain	Field Artillery	NP - 1	April 25th	October 27th	Commanding Officer
Smith, E. Noel	Doctor	-	NP - 2	August 25th	October 10th	Contract Surgeon
Uford, Celian	-	-	NP - 2	April 25th	October	Educational Adviser

TABLE XXIV
 PROMINENT VISITORS TO CRATER LAKE NATIONAL PARK
 IN CONNECTION WITH ECW ACTIVITIES

DATE	NAME	TITLE	REMARKS
April 27, 28	Mr. W. C. Carnes	Chief, Western Division Plans and Designs.	
May 21, 22	Mr. Frank A. Kittredge	Chief Engineer	
June 25, 26, 27	Mr. Frank A. Kittredge	Chief Engineer	Upon leaving Crater Lake Park, Mr. Kittredge spent two days at Oregon Caves National Monument, going over the ECW program for this Monument with Park Engineer for ECW Whitworth.
June 26	Mr. W. C. Carnes	Chief, Western Division Plans and Designs.	
July 18, 19	Dr. H. C. Bryant	Assistant Director	While here Dr. Bryant consulted with Wildlife Technician Robert S. Evans in re his studies.
July 25	Mr. Ben H. Thompson	Wildlife Division	Arrived to help Wildlife Technician Evans in his studies.
July 30, 31	Mr. L. P. Cook	Associate Forester	Arrived at the Lake after having spent two days at Oregon Caves National Monument.
July 31	Mr. Harry Hommon	Engineer, Bureau of Public Health	Upon leaving Crater Lake Mr. Hommon spent two days at Oregon Caves with Park Engineer W. E. Robertson going over water development and sewerage disposal projects at this Monument.
August 9, 10, 11, 12	Mr. Shirley Allen	Inspector, Forestry Division	Inspection ECW activities primarily and the entire Park setup in general. He visited Lava Beds National Monument on his return to the South.
August 9, 10	Mr. Arno D Cammerer	Director National Park Service	Mr. Cammerer, accompanied by Col. C. C. Thomson of Yosemite National Park, visited the Park on a tour of inspection.
August 10, 11	Mr. Robert E. Pechner	Director of ECW	Mr. Pechner, accompanied by Major Armstrong, Commanding Officer Medford District CCC, and C. B. Morse, Liaison Officer Ninth Corps Area, visited the Park on a tour of inspection.
August 21	Mr. Walter M. Pierce	Member of Congress	Visited the two camps, having lunch at Camp Ineglass and supper at Camp Annie Spring.

TABLE XX IV
 PROMINENT VISITORS OF CRATER LAKE NATIONAL PARK
 IN CONNECTIONS WITH ECW ACTIVITIES

DATE	NAME	TITLE	REMARKS
September 9	Mr. Joe E. Dunne	Republican Candidate for Governor	Visited Fall Festival at Camp Annie Spring and made a short address.
September 10, 11, 12	Mr. Shirley Allen	Inspector, Forestry Division	Inspecting ECW activities.
September 17, 18, 19	Dr. W. P. Meinecke	Principal Pathologist Division of Plant Industry, Department of Agriculture.	Inspecting ECW camp ground development, roadside clean-up and forest insect problems. Dr. Meinecke visited Lava Beds National Monument on his way South.
October 4	Major Clare Armstrong	Commanding Officer Medford CCC District	Major Armstrong accompanied by a party consisting of the Mayor of Medford, Chairman of Medford Chamber of Commerce, Editor of the Medford Mail Tribune and other prominent Jackson County residents, inspected ECW projects and had supper at Camp Lineglass.

TABLE XXXV
ACCIDENTS TO AUTOMOTIVE EQUIPMENT

DATE	TRUCK		TYPE	DRIVER	OTHER PARTY INVOLVED	DAMAGE TO GOV'T. CAR	COST OF DAMAGES	REMARKS
	LICENSE NO.	MOTOR NO.						
June 9th	USDI 629	T3684803	Dump	Roy Sherlock	J.E. Brayton	Bent fender. Sprung rear axle and housing.	\$30.25	J. E. Brayton at Sequim, Wash., ran into rear end of truck. He admitted he was at fault and expenses incident to this accident were paid by his Insurance Company.
August 2nd	USDI 609	K3674492	Pickup	Captain Crowley	None	Bent axles and wheels.	\$16.00	When driving back from official inspection of Camp Oregon Caves, to Crater Lake a red rag flew up in Captain Crowley's face causing him to loose control of the car. He left the highway with resultant damage described under damage column. Costs of accident paid by US Army.
August 14th	USDI 620	BB4186837	Stake		None	Total loss		A gasoline drum being unloaded from bed of truck caught fire from coals of lunch truck fifteen feet away. Enrollee Scott was badly burned around the chest, shoulders and arms, and was confined in the hospital for over a month. A report recommending that this truck be written off the books was concurred in by the Board of Survey, August 30th, 1934.
October 13	USDI 616	T3684845	Dump	J.H. Jordan	Dave McLaren	None	\$33.07	While attempting to pass McLaren's car Jordan cut in too quickly, the rear end of the truck hit the fender of the private vehicle forcing it off the highway. As Jordan admitted he was at fault McLaren's claim for damage was prepared and forwarded to the Director through the customary channels.
October 18	USDI 628	T3685027	Stake	Robert Jones	None	Wrecked front end and frame.	\$324.05	While returning to the lake, Jones fainted, losing control of the truck which crashed into a large tree. Jones suffered a few bruises but no serious injury. The truck was towed to Medford and repaired on a contract.

EMERGENCY
CONSERVATION
W O R K



SECTION F
MISCELLANEOUS REPORTS



DEPARTMENT OF THE INTERIOR
NATIONAL PARK SERVICE
CRATER LAKE NATIONAL PARK
D. H. Canfield, Actg. Supt.

INFORMATION FOR THE PRESS
Immediate Release--ER

Crater Lake National Park, Ore., Aug. ____ (Special)--The two Civilian Conservation Corps Camps in the Park have been receiving their share of complimentary bouquets during the past summer.

The Annie Spring camp came through the month of July by winning first place in the district for being the highest rated camp.

When Mrs. Franklin D. Roosevelt was at Crater Lake, she took special notice of a group of Wineglass camp boys engaged in landscaping activities in the rim area. "A fine piece of work you are doing," she said, "wherever I go I hear so much of the good work you boys are accomplishing."

In making his inspection trip throughout the country, Robert Fechner, National Director of CCC visited both camps. He was impressed by their neatness and efficiency, but expressed himself particularly in regard to the "Wineglass Volcano," camp newspaper edited by Anthony R. Manno. He complimented the editorial written by Mr. Manno and told the camp members he planned to show the paper to President Roosevelt, as an example of the spirit of CCC members.

The paragraph he referred to particularly was: "We hope you will read on our faces the real spirit that prevails--that of contentment and determination to avail ourselves of this wonderful opportunity to build up ourselves physically and mentally--to better equip ourselves for the long battle of life which lies before us and therefore fulfill the wish of our beloved President. We believe our Country is unquestionably the best place on earth and as young citizens, it is our desire to always keep it so."

The morale of the Crater Lake camps is high. Both organizations have well trained baseball teams which have had numerous games during the past season. The Annie Spring camp has a ten piece orchestra which has been holding a regular practice and will soon make public appearances. Wineglass is developing a group of skillful boxers and wrestlers, who take part in smokers every Friday evening.