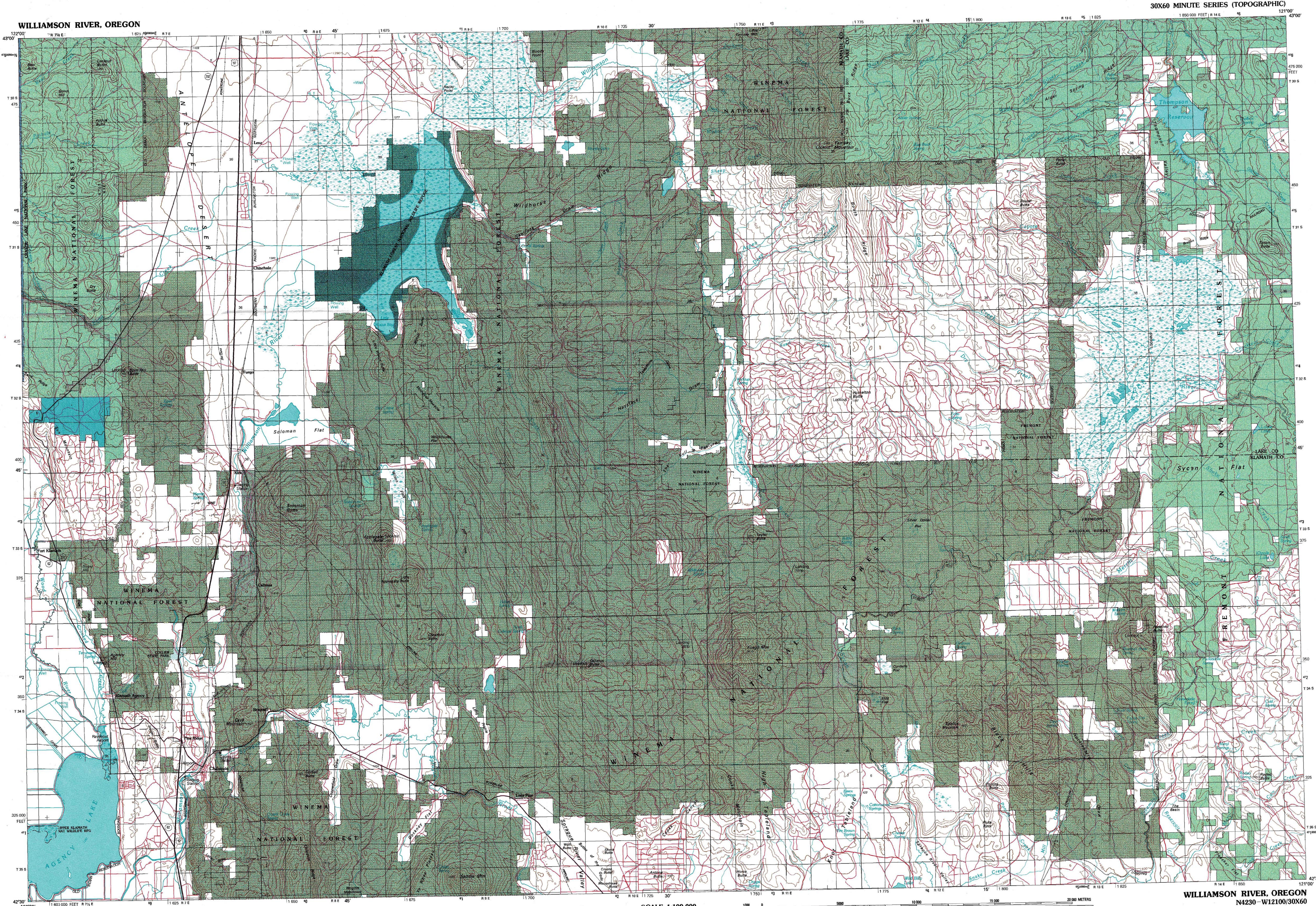


WILLIAMSON RIVER, OREGON



30X60 MINUTE SERIES (TOPOGRAPHIC)

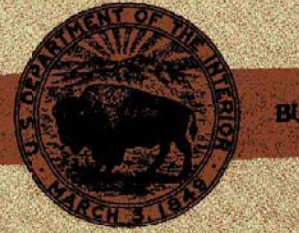
BLM SPECIAL EDITION—1981
SURFACE MANAGEMENT STATUS
1:100 000-scale metric
topographic map of
Williamson River
OREGON



30 X 60 MINUTE QUADRANGLE
SHOWING

- Contours and elevations in meters
- Highways, roads and other manmade structures
- Water features

- Geographic names



BUREAU OF LAND MANAGEMENT

Edited and published by the Bureau of Land Management
Base map prepared by the U.S. Geological Survey
Compiled from USGS 1:62 500-scale topographic maps
dated 1956-1960. Planimetry revised from aerial photographs
taken 1975 and other source data. Revised information not
field checked. Map edited 1980
Projection and 10 000-meter grid, zone 10,
Universal Transverse Mercator
25 000-foot grid ticks based on Oregon coordinate system,
south zone. 1927 North American Datum
To place on the predicted North American Datum 1983
move the projection lines 19 meters north and 92 meters east

CONTOUR INTERVAL: 40 METERS
SUPPLEMENTARY CONTOUR INTERVAL: 10 METERS
NATIONAL GEODETIC VERTICAL DATUM OF 1929

THIS MAP COMPLIES WITH NATIONAL MAP ACCURACY STANDARDS

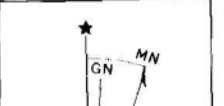
CONVERSION TABLE

Meters	Feet
1	3.2808
2	6.5617
3	9.8425
4	13.1234
5	16.4042
6	19.6850
7	22.9658
8	26.2467
9	29.5275
10	32.8084

To convert meters to feet multiply by 3.2808

To convert feet to meters multiply by 0.3048

DECLINATION DIAGRAM



UTM grid convergence (GN) and GN/M magnetic declination (M) at center of map Diagram is approximate

ADJOINING MAPS

1	2	3
4	5	6
7	8	9

- 1 Diamond Lake
- 2 Crescent
- 3 Christmas Valley
- 4 Crater Lake
- 5 Lake Alert
- 6 Medford
- 7 Klamath Falls
- 8 Lakeview

FOR SALE BY U. S. GEOLOGICAL SURVEY, DENVER, COLORADO 80225
and
BLM STATE OFFICE
PORTLAND, OR 97208

Topographic Map Symbols

Primary highway, hard surface	
Secondary highway, hard surface	
Light duty road, principal street, hard or improved surface	
River, road or stream, road	
Route marker: Interstate, U. S. State	
National boundary	
State boundary	
County boundary	
National or State reservation boundary	
Land grant boundary	
U. S. public lands survey: range, township, section	
Range, township; section line: protected	
Power transmission line: pipeline	
Dune, dam with lock	
Cemetery, building	
Mine shaft; water well; spring	
Mine shaft; salt or cave; mine, quarry; gravel pit	
Built up area; heavily wooded	
Major, landing field, landing strip	
National boundary	
State boundary	
County boundary	
National or State reservation boundary	
Land grant boundary	
U. S. public lands survey: range, township, section	
Range, township; section line: protected	
Power transmission line: pipeline	
Dune, dam with lock	
Cemetery, building	
Mine shaft; water well; spring	
Mine shaft; salt or cave; mine, quarry; gravel pit	
Built up area; heavily wooded	
Major, landing field, landing strip	
National boundary	
State boundary	
County boundary	
National or State reservation boundary	
Land grant boundary	
U. S. public lands survey: range, township, section	
Range, township; section line: protected	
Power transmission line: pipeline	
Dune, dam with lock	
Cemetery, building	
Mine shaft; water well; spring	
Mine shaft; salt or cave; mine, quarry; gravel pit	
Built up area; heavily wooded	
Major, landing field, landing strip	
National boundary	
State boundary	
County boundary	
National or State reservation boundary	
Land grant boundary	
U. S. public lands survey: range, township, section	
Range, township; section line: protected	
Power transmission line: pipeline	
Dune, dam with lock	
Cemetery, building	
Mine shaft; water well; spring	
Mine shaft; salt or cave; mine, quarry; gravel pit	
Built up area; heavily wooded	
Major, landing field, landing strip	
National boundary	
State boundary	
County boundary	
National or State reservation boundary	
Land grant boundary	
U. S. public lands survey: range, township, section	
Range, township; section line: protected	
Power transmission line: pipeline	
Dune, dam with lock	
Cemetery, building	
Mine shaft; water well; spring	
Mine shaft; salt or cave; mine, quarry; gravel pit	
Built up area; heavily wooded	
Major, landing field, landing strip	
National boundary	
State boundary	
County boundary	
National or State reservation boundary	
Land grant boundary	
U. S. public lands survey: range, township, section	
Range, township; section line: protected	
Power transmission line: pipeline	
Dune, dam with lock	
Cemetery, building	
Mine shaft; water well; spring	
Mine shaft; salt or cave; mine, quarry; gravel pit	
Built up area; heavily wooded	
Major, landing field, landing strip	
National boundary	
State boundary	
County boundary	
National or State reservation boundary	
Land grant boundary	
U. S. public lands survey: range, township, section	
Range, township; section line: protected	
Power transmission line: pipeline	
Dune, dam with lock	
Cemetery, building	
Mine shaft; water well; spring	
Mine shaft; salt or cave; mine, quarry; gravel pit	
Built up area; heavily wooded	
Major, landing field, landing strip	
National boundary	
State boundary	
County boundary	
National or State reservation boundary	
Land grant boundary	
U. S. public lands survey: range, township, section	
Range, township; section line: protected	
Power transmission line: pipeline	
Dune, dam with lock	
Cemetery, building	
Mine shaft; water well; spring	
Mine shaft; salt or cave; mine, quarry; gravel pit	
Built up area; heavily wooded	
Major, landing field, landing strip	
National boundary	
State boundary	
County boundary	
National or State reservation boundary	
Land grant boundary	
U. S. public lands survey: range, township, section	
Range, township; section line: protected	
Power transmission line: pipeline	
Dune, dam with lock	
Cemetery, building	
Mine shaft; water well; spring	
Mine shaft; salt or cave; mine, quarry; gravel pit	
Built up area; heavily wooded	
Major, landing field, landing strip	
National boundary	
State boundary	
County boundary	
National or State reservation boundary	
Land grant boundary	
U. S. public lands survey: range, township, section	
Range, township; section line: protected	
Power transmission line: pipeline	
Dune, dam with lock	
Cemetery, building	
Mine shaft; water well; spring	
Mine shaft; salt or cave; mine, quarry; gravel pit	
Built up area; heavily wooded	
Major, landing field, landing strip	
National boundary	
State boundary	
County boundary	
National or State reservation boundary	
Land grant boundary	
U. S. public lands survey: range, township, section	
Range, township; section line: protected	
Power transmission line: pipeline	
Dune, dam with lock	
Cemetery, building	
Mine shaft; water well; spring	
Mine shaft; salt or cave; mine, quarry; gravel pit	
Built up area; heavily wooded	
Major, landing field, landing strip	
National boundary	
State boundary	
County boundary	
National or State reservation boundary	
Land grant boundary	
U. S. public lands survey: range, township, section	
Range, township; section line: protected	
Power transmission line: pipeline	
Dune, dam with lock	
Cemetery, building	
Mine shaft; water well; spring	
Mine shaft; salt or cave; mine, quarry; gravel pit	
Built up area; heavily wooded	
Major, landing field, landing strip	
National boundary	
State boundary	
County boundary	
National or State reservation boundary	
Land grant boundary	
U. S. public lands survey: range, township, section	
Range, township; section line: protected	
Power transmission line: pipeline	
Dune, dam with lock	
Cemetery, building	
Mine shaft; water well; spring	
Mine shaft; salt or cave; mine, quarry; gravel pit	
Built up area; heavily wooded	
Major, landing field, landing strip	
National boundary	
State boundary	
County boundary	
National or State reservation boundary	
Land grant boundary	
U. S. public lands survey: range, township, section	
Range, township; section line: protected	
Power transmission line: pipeline	
Dune, dam with lock	
Cemetery, building	
Mine shaft; water well; spring	
Mine shaft; salt or cave; mine, quarry; gravel pit	
Built up area; heavily wooded	
Major, landing field, landing strip	
National boundary	
State boundary	
County boundary	
National or State reservation boundary	
Land grant boundary	
U. S. public lands survey: range, township, section	
Range, township; section line: protected	
Power transmission line: pipeline	
Dune, dam with lock	
Cemetery, building	
Mine shaft; water well; spring	
Mine shaft; salt or cave; mine, quarry; gravel pit	
Built up area; heavily wooded	
Major, landing field, landing strip	
National boundary	
State boundary	
County boundary	
National or State reservation boundary	
Land grant boundary	
U. S. public lands survey: range, township, section	
Range, township; section line: protected	
Power transmission line: pipeline	
Dune, dam with lock	
Cemetery, building	
Mine shaft; water well; spring	
Mine shaft; salt or cave; mine, quarry; gravel pit	
Built up area; heavily wooded	
Major, landing field, landing strip	
National boundary	
State boundary	
County boundary	
National or State reservation boundary	
Land grant boundary	
U. S. public lands survey: range, township, section	
Range, township; section line: protected	
Power transmission line: pipeline	
Dune, dam with lock	
Cemetery, building	
Mine shaft; water well; spring	
Mine shaft; salt or cave; mine, quarry; gravel pit	
Built up area; heavily wooded	
Major, landing field, landing strip	
National boundary	
State boundary	
County boundary	
National or State reservation boundary	
Land grant boundary	
U. S. public lands survey: range, township, section	
Range, township; section line: protected	
Power transmission line: pipeline	
Dune, dam with lock	
Cemetery, building	
Mine shaft; water well; spring	
Mine shaft; salt or cave; mine, quarry; gravel pit	
Built up area; heavily wooded	
Major, landing field, landing strip	
National boundary	
State boundary	
County boundary	
National or State reservation boundary	
Land grant boundary	
U. S. public lands survey: range, township, section	
Range, township; section line: protected	
Power transmission line: pipeline	
Dune, dam with lock	
Cemetery, building	
Mine shaft; water well; spring	
Mine shaft; salt or cave; mine, quarry; gravel pit	
Built up area; heavily wooded	
Major, landing field, landing strip	
National boundary	
State boundary	
County boundary	
National or State reservation boundary	
Land grant boundary	
U. S. public lands survey: range, township, section	
Range, township; section line: protected	
Power transmission line: pipeline	
Dune, dam with lock	
Cemetery, building	
Mine shaft; water well; spring	
Mine shaft; salt or cave; mine, quarry; gravel pit	
Built up area; heavily wooded	
Major, landing field, landing strip	
National boundary	
State boundary	
County boundary	
National or State reservation boundary	
Land grant boundary	
U. S. public lands survey: range, township, section	
Range, township; section line: protected	
Power transmission line: pipeline	
Dune, dam with lock	
Cemetery, building	
Mine shaft; water well; spring	
Mine shaft; salt or cave; mine, quarry; gravel pit	
Built up area; heavily wooded	
Major, landing field, landing strip	
National boundary	
State boundary	
County boundary	
National or State reservation boundary	
Land grant boundary	
U. S. public lands survey: range, township, section	
Range, township; section line: protected	
Power transmission line: pipeline	
Dune, dam with lock	
Cemetery, building	
Mine shaft; water well; spring	
Mine shaft; salt or cave; mine, quarry; gravel pit	
Built up area; heavily wooded	
Major, landing field, landing strip	
National boundary	
State boundary	
County boundary	
National or State reservation boundary	
Land grant boundary	
U. S. public lands survey: range, township, section	
Range, township; section line: protected	
Power transmission line: pipeline	
Dune, dam with lock	
Cemetery, building	
Mine shaft; water well; spring	
Mine shaft; salt or cave; mine, quarry; gravel pit	
Built up area; heavily wooded	
Major, landing field, landing strip	
National boundary	
State boundary	
County boundary	
National or State reservation boundary	
Land grant boundary	
U. S. public lands survey: range, township, section	
Range, township; section line: protected	
Power transmission line: pipeline	
Dune, dam with lock	
Cemetery, building	
Mine shaft; water well; spring	
Mine shaft; salt or cave; mine, quarry; gravel pit	
Built up area; heavily wooded	
Major, landing field, landing strip	
National boundary	
State boundary	
County boundary	
National or State reservation boundary	
Land grant boundary	
U. S. public lands survey: range, township, section	
Range, township; section line: protected	
Power transmission line: pipeline	
Dune, dam with lock	
Cemetery, building	
Mine shaft; water well; spring	
Mine shaft; salt or cave; mine, quarry; gravel pit	
Built up area; heavily wooded	
Major, landing field, landing strip	
National boundary	
State boundary	